

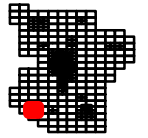
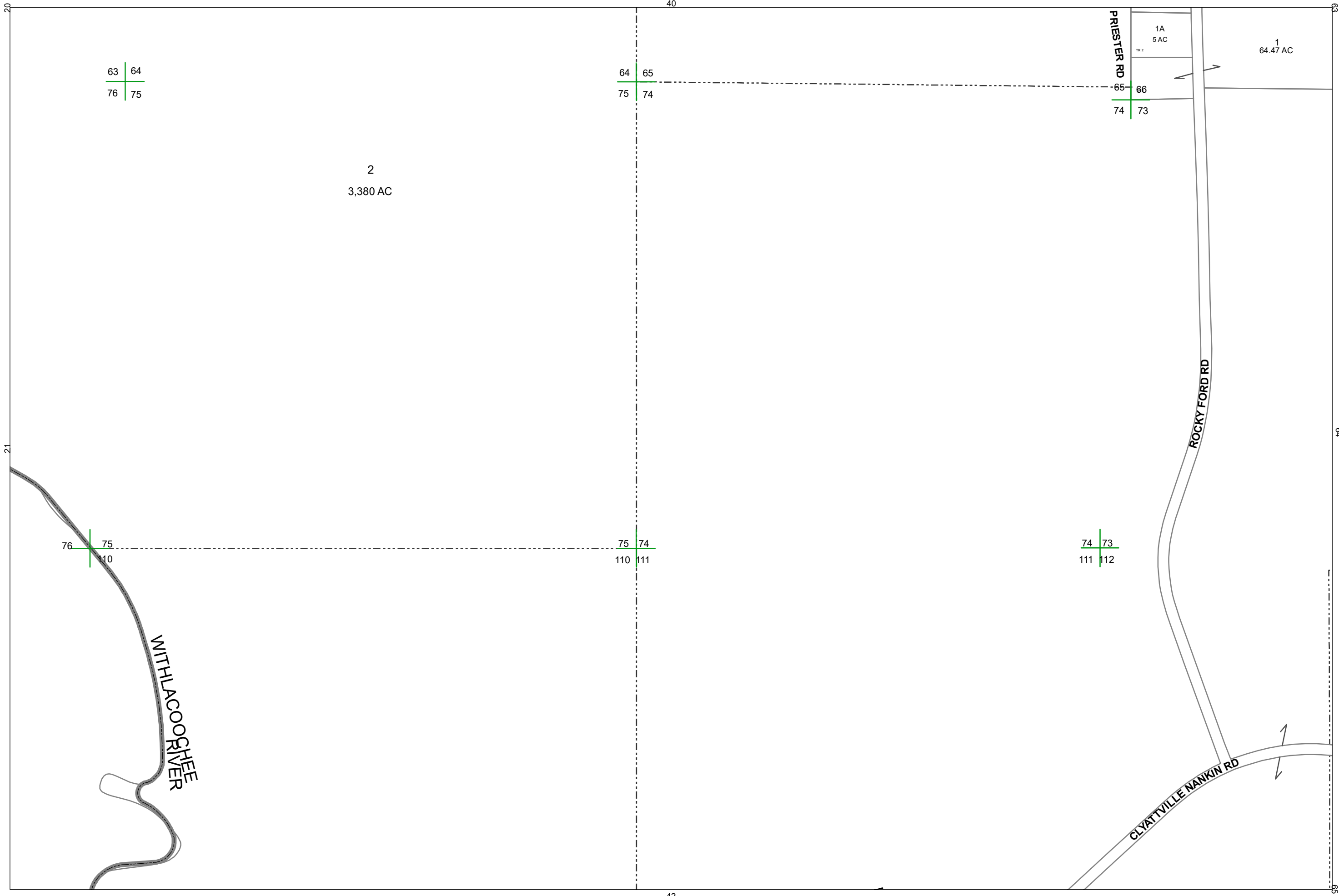
2024  
 LOWNDES COUNTY  
 GEORGIA

1 inch = 800 feet



VALOR  
 BOARD OF ASSESSORS  
 SGIIC

40



2024  
**LOWNDES COUNTY**  
**GEORGIA**

1 inch = 800 feet



BOARD OF ASSESSORS

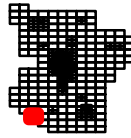
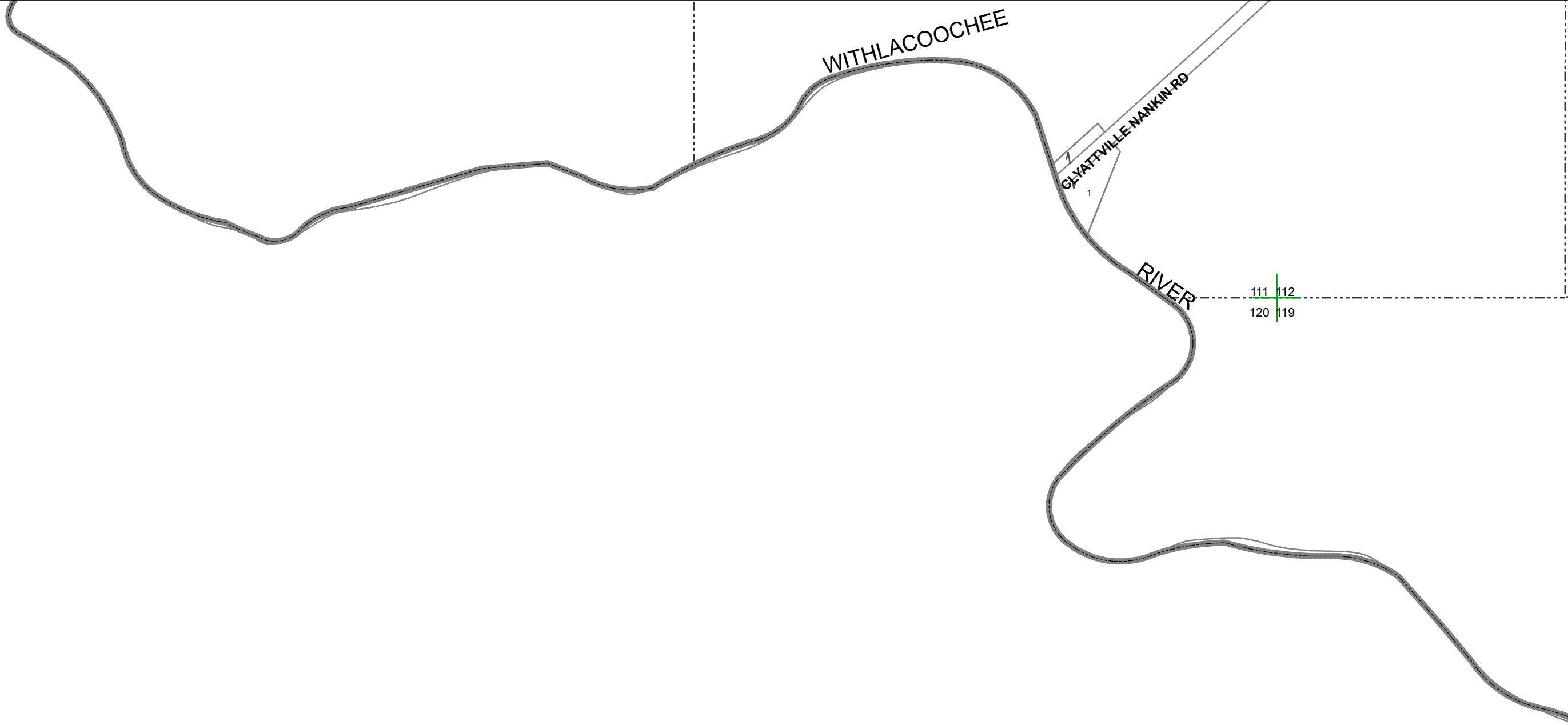


41

21

41

64



2024

**LOWNDES COUNTY**  
**GEORGIA**

59

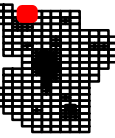
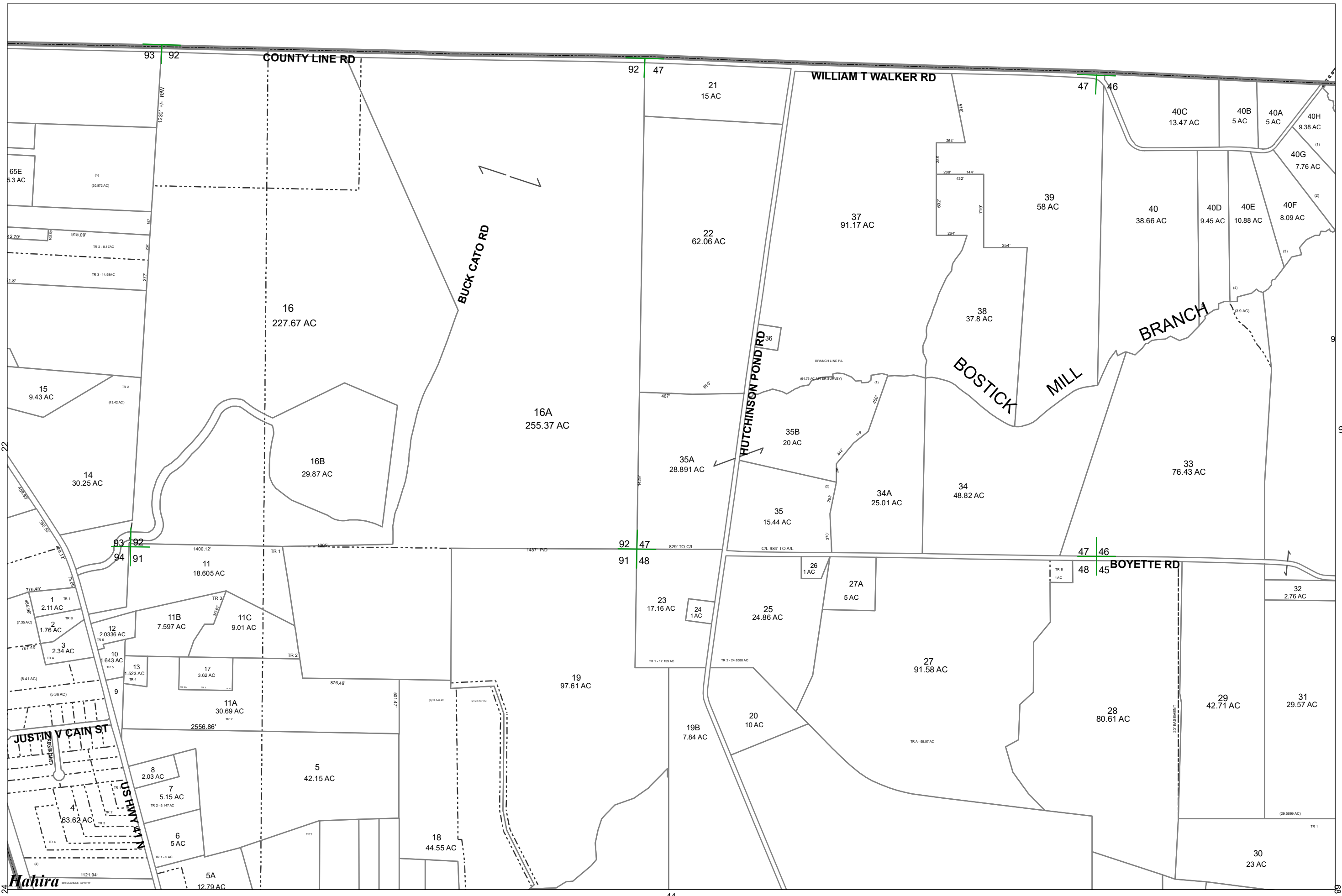
1 inch = 800 feet



**VALOR**  
www.valorsystems.com  
VALOR SYSTEMS  
SGIC  
SPATIAL, GEOSPATIAL, COGNITIVE

42

69



2024

LOWNDES COUNTY  
GEORGIA

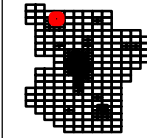
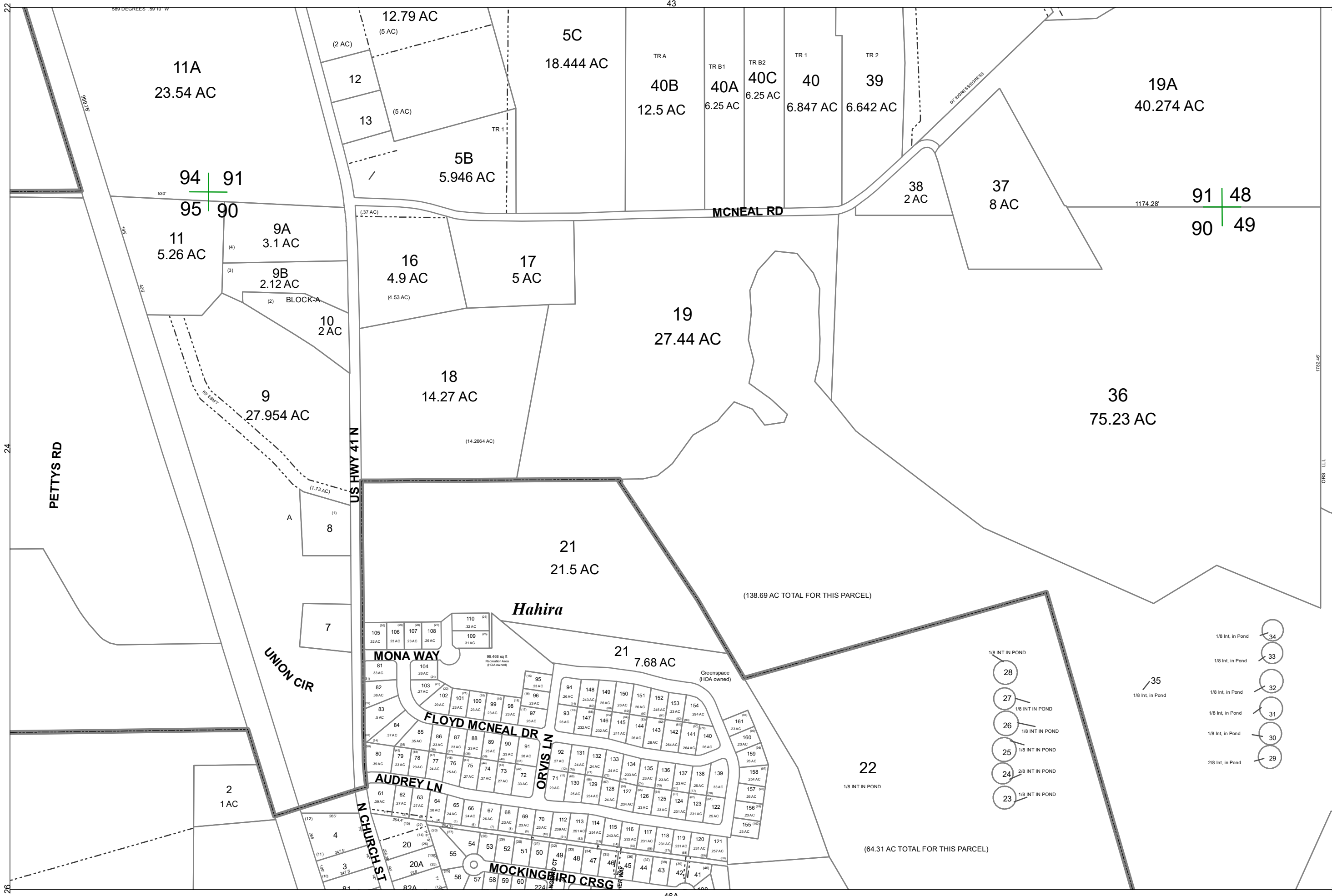
1 inch = 800 feet



**VALOR**  
SGIC

43

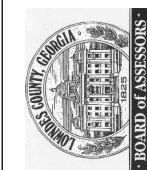
**Mahira**



2024

LOWNDES COUNTY  
GEORGIA

1 inch = 400 feet

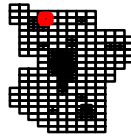
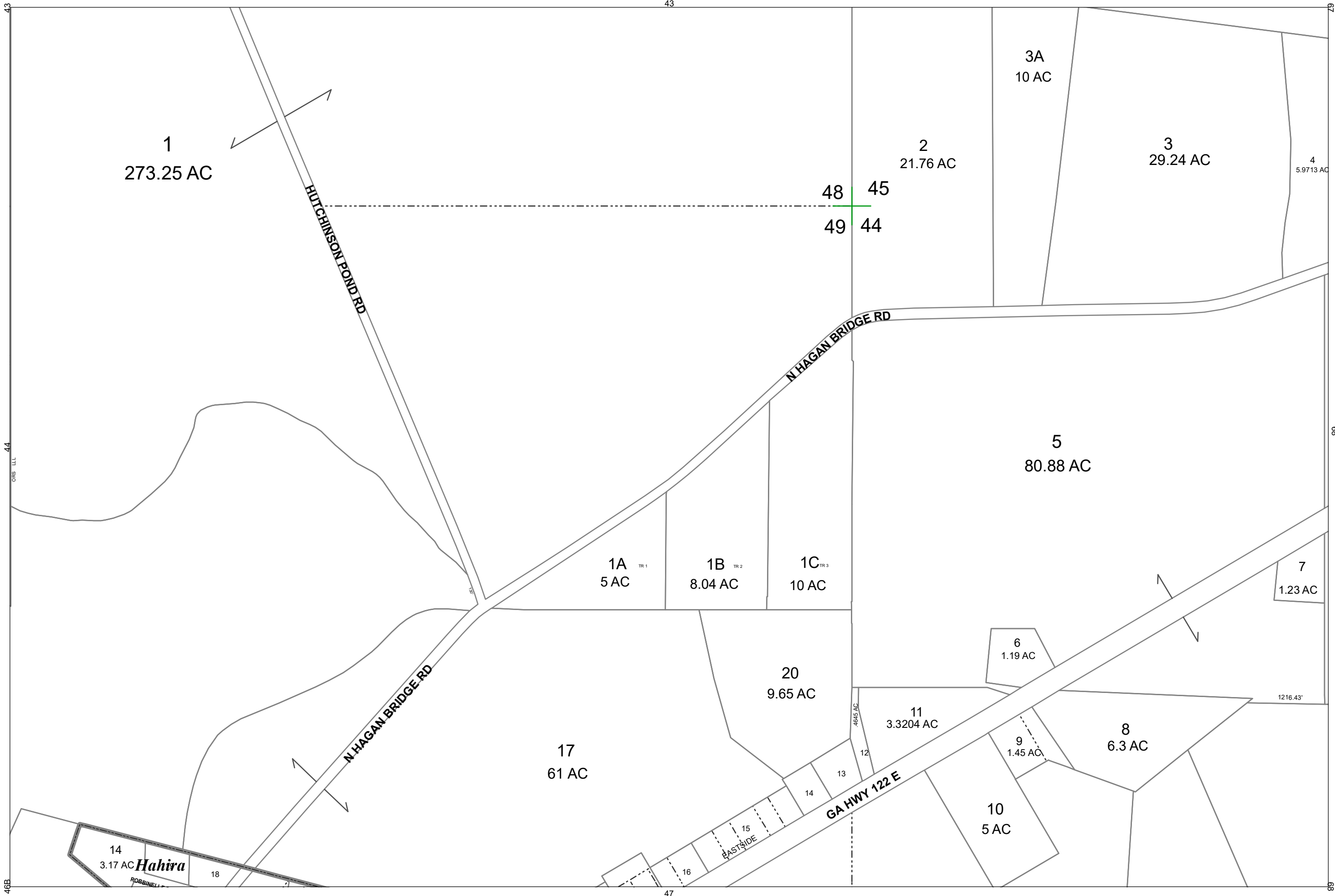


BOARD OF ASSESSORS

**VALOR**  
SPECIALTY INFORMATION GROUP  
SPECIALTY INFORMATION GROUP  
SPECIALTY INFORMATION GROUP

44

- 1/8 INT IN POND 34
- 1/8 Int. in Pond 33
- 1/8 Int. in Pond 32
- 1/8 Int. in Pond 31
- 1/8 Int. in Pond 30
- 2/8 Int. in Pond 29
- 1/8 Int. in Pond 28
- 1/8 Int. in Pond 27
- 1/8 INT IN POND 26
- 1/8 INT IN POND 25
- 2/8 INT IN POND 24
- 1/8 INT IN POND 23



2024

LOWNDES COUNTY  
GEORGIA

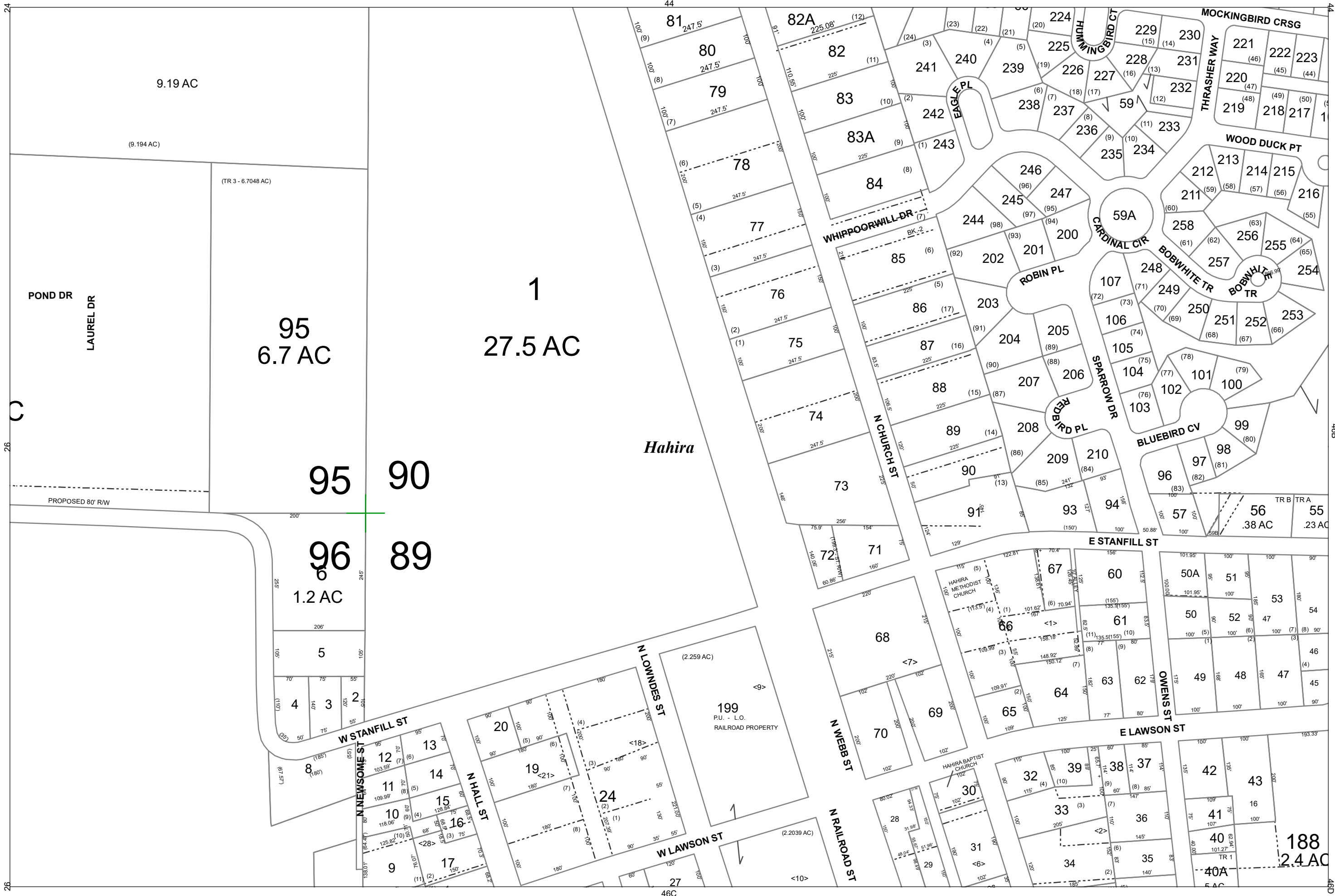
1 inch = 400 feet



BOARD OF ASSESSORS

**VALOR**  
SGIC

45



9.19 AC

(9.194 AC)

(TR 3 - 6.7048 AC)

95  
6.7 AC

1  
27.5 AC

95

90

96  
1.2 AC

89

5

4 3 2

W STANFILL ST

N NEWSOME ST

N HALL ST

N LOWNDES ST

W LAWSON ST

N WEBB ST

N RAILROAD ST

HAHIRA  
METHODIST  
CHURCH

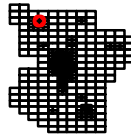
HAHIRA BAPTIST  
CHURCH

199  
P.U. - L.O.  
RAILROAD PROPERTY

(2.2039 AC)

(2.259 AC)

46C



2024

LOWNDES COUNTY  
GEORGIA

1 inch = 200 feet

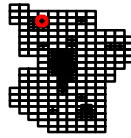
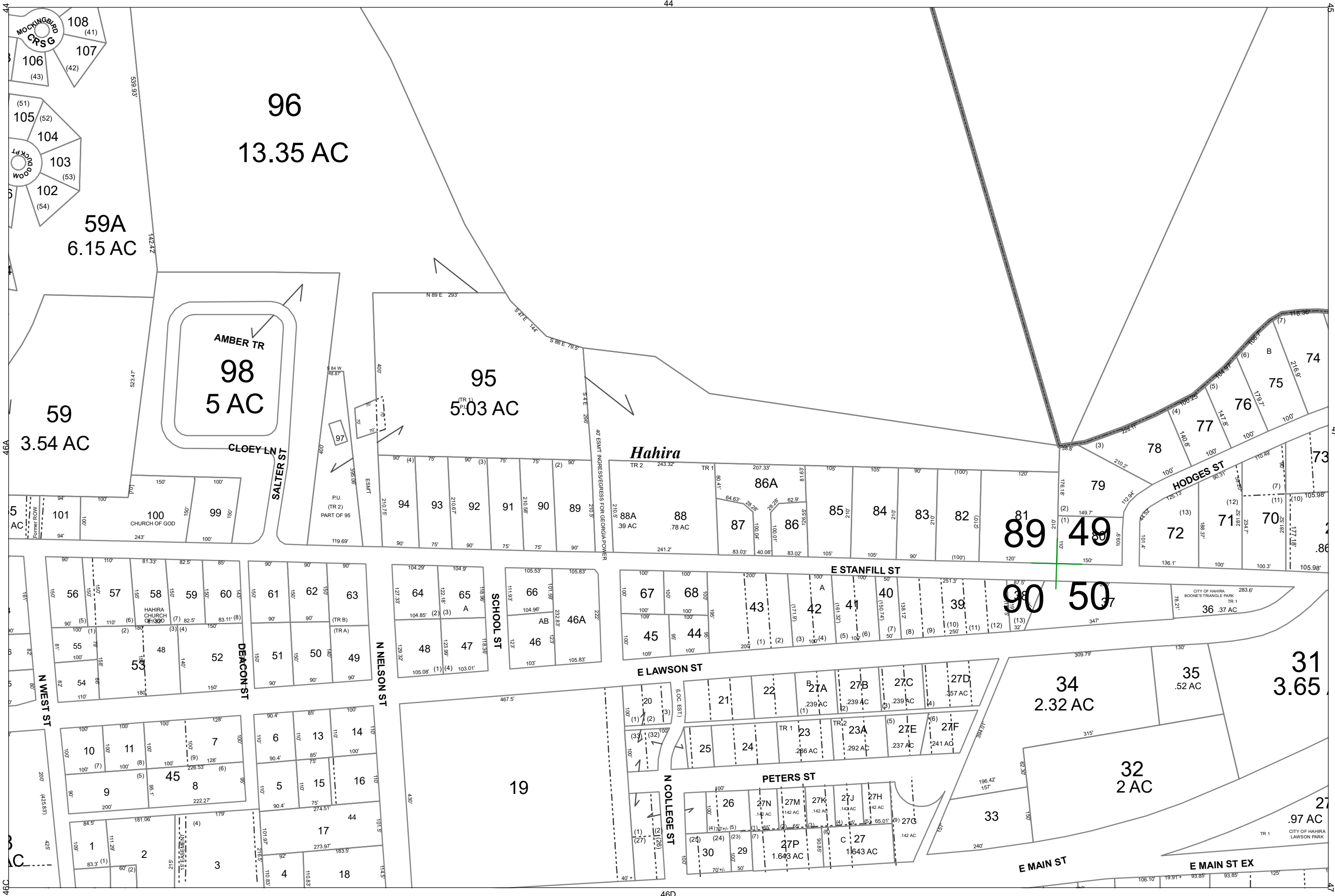


VALOR  
SPIC  
BOARD OF ASSESSORS

46A

46B

46D



2024

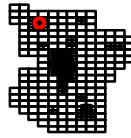
LOWNDES COUNTY  
GEORGIA

1 inch = 200 feet



46B





2024

LOWNDES COUNTY  
GEORGIA

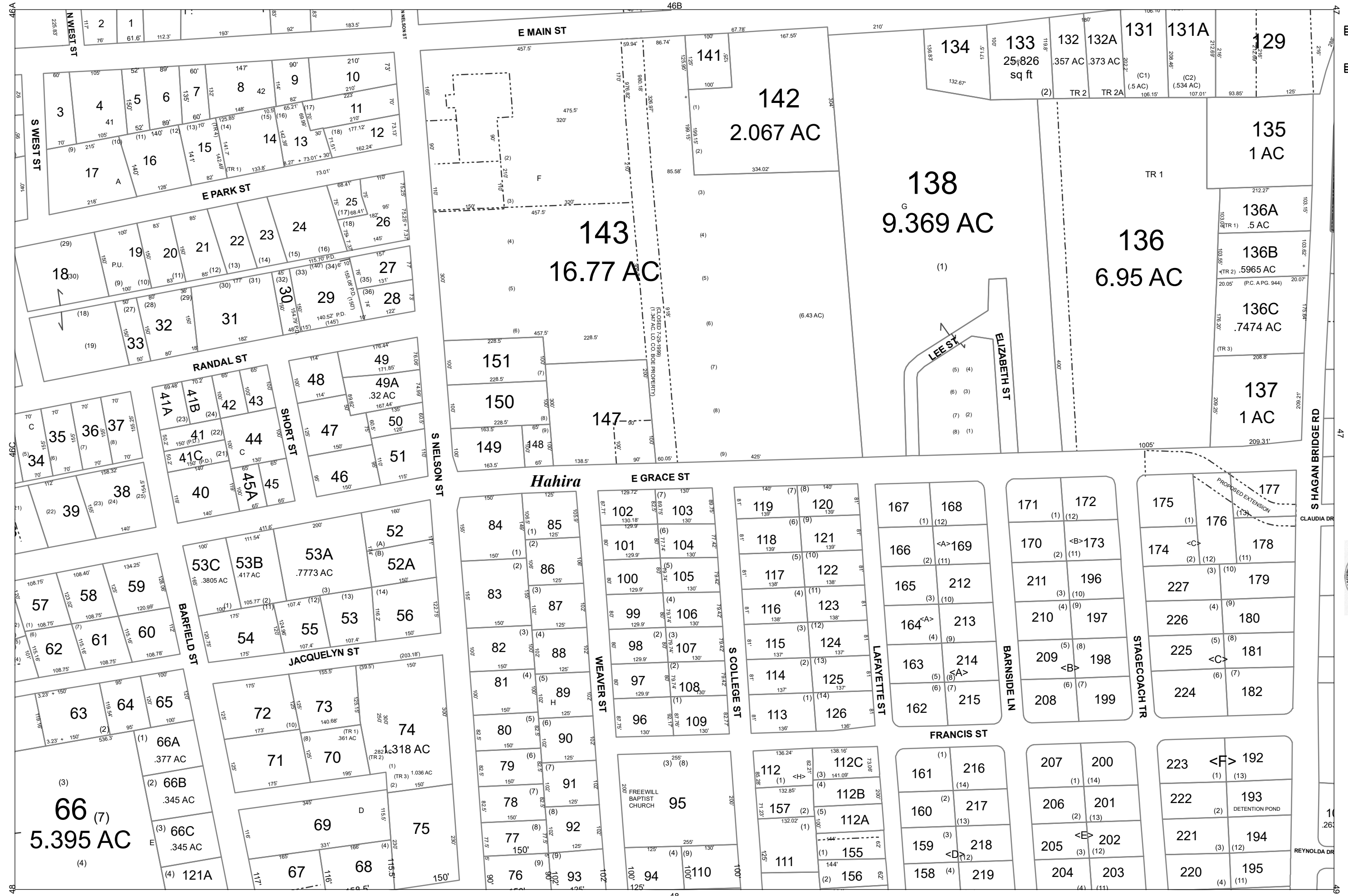
1 inch = 200 feet



BOARD OF ASSESSORS

VALOR  
SPIC

46C



2024

LOWNDES COUNTY  
GEORGIA

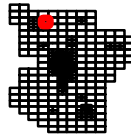
1 inch = 200 feet



BOARD OF ASSESSORS



46D



2024

LOWNDES COUNTY  
GEORGIA

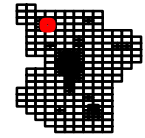
1 inch = 400 feet



BOARD OF ASSESSORS

VALOR  
SGIC

47



2024

LOWNDES COUNTY  
GEORGIA

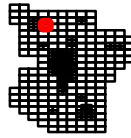
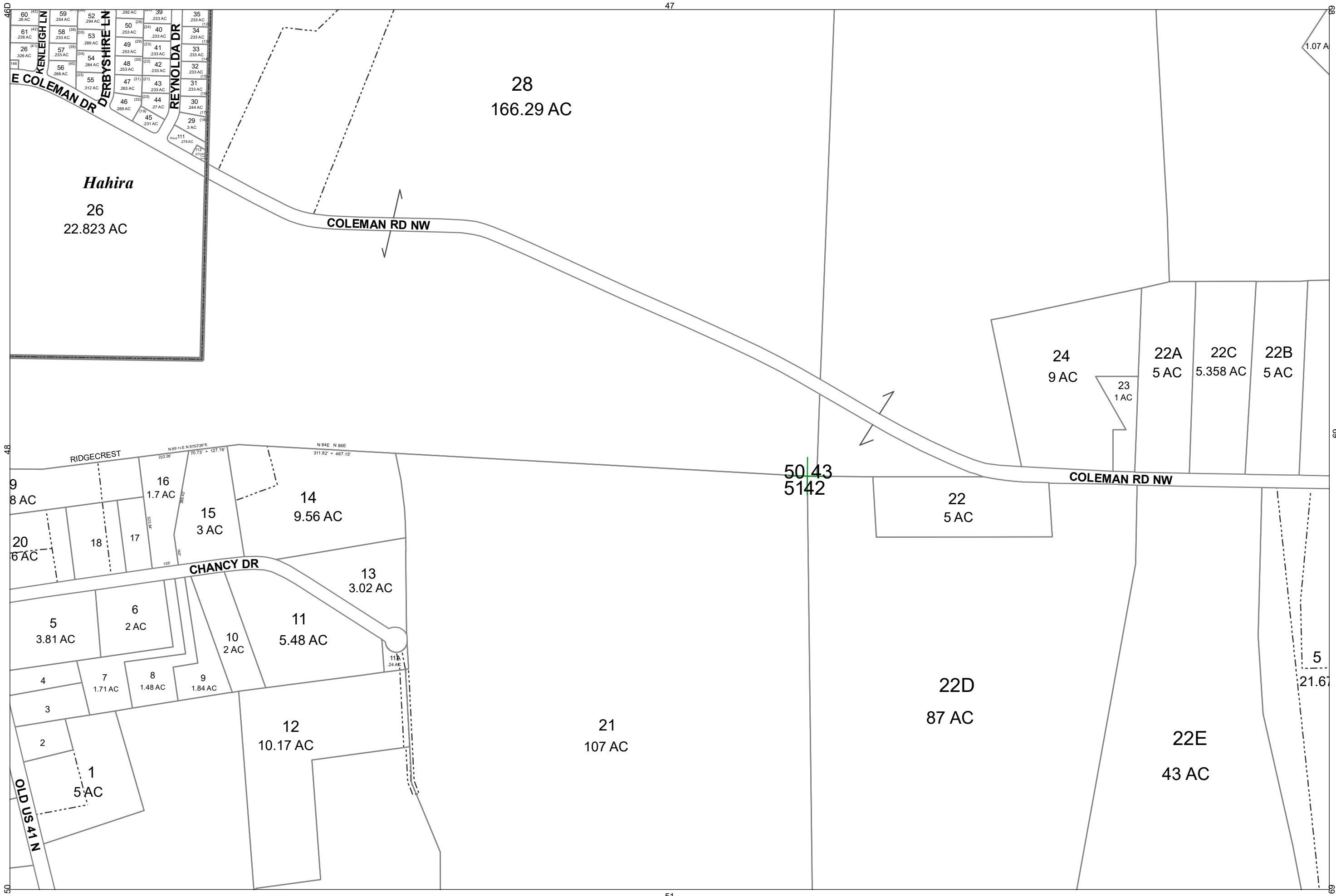
1 inch = 400 feet



BOARD OF ASSESSORS



48



2024

LOWNDES COUNTY  
GEORGIA

1 inch = 400 feet



**VALOR**  
SGIC

49