

2024

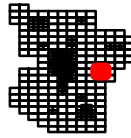
LOWNDES COUNTY
GEORGIA

1 inch = 800 feet



VALOR
SGIC

236



2024

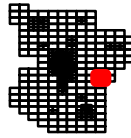
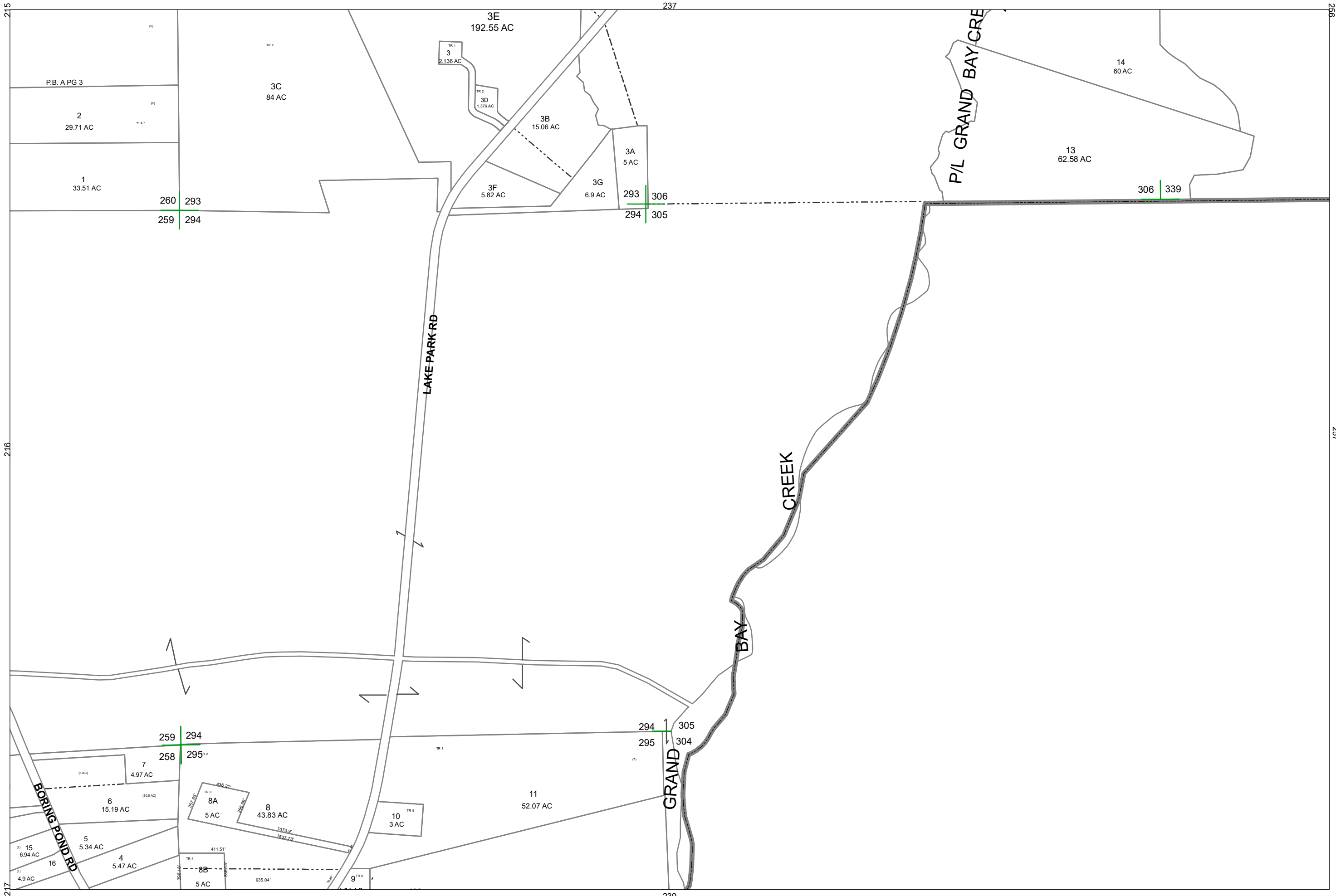
**LOWNDES COUNTY
GEORGIA**

1 inch = 800 feet



VALOR
SGIC

237



2024

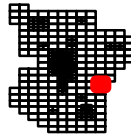
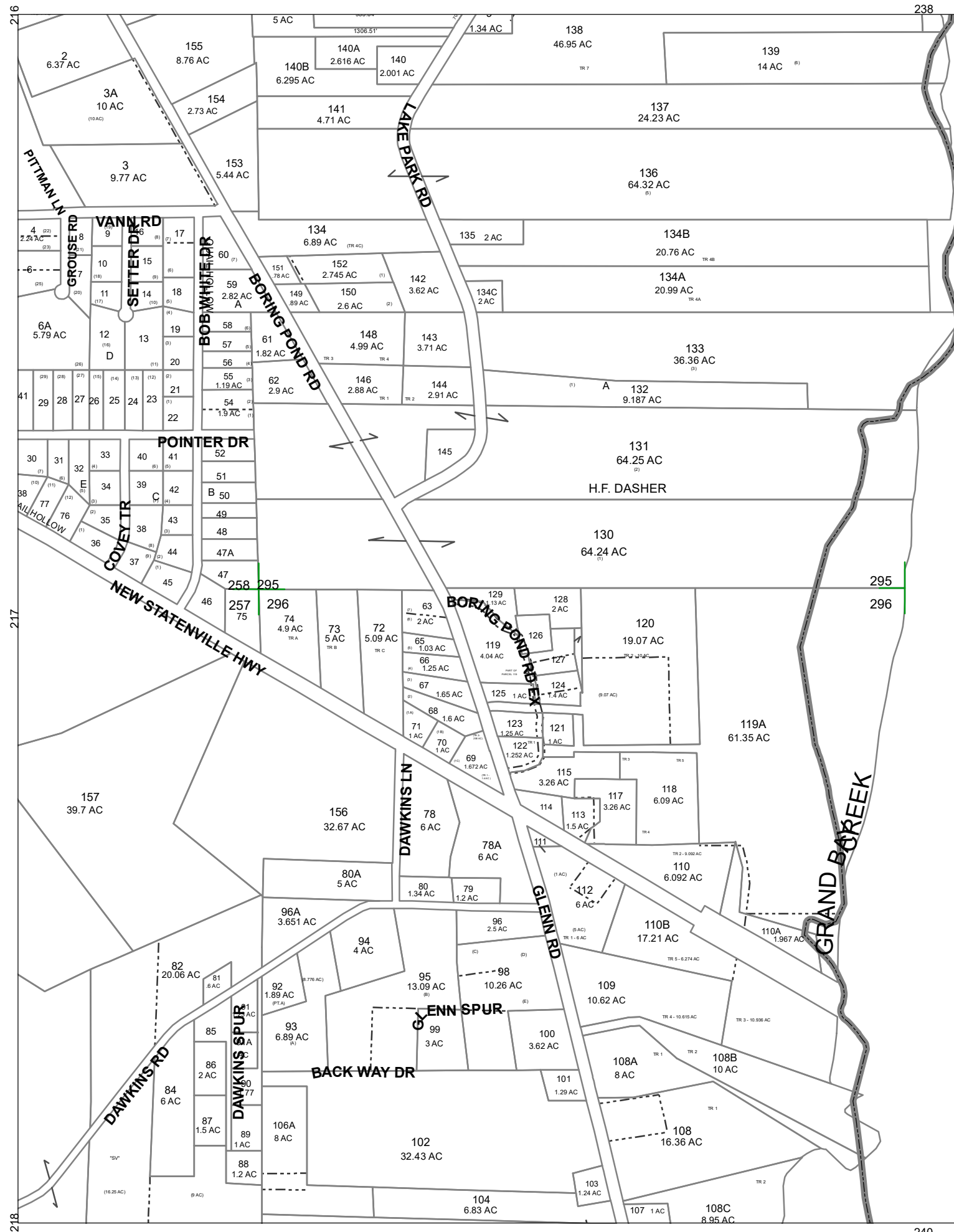
LOWNDES COUNTY
GEORGIA

1 inch = 800 feet



VALOR
S^gIC

238



2024

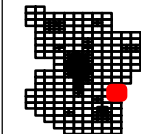
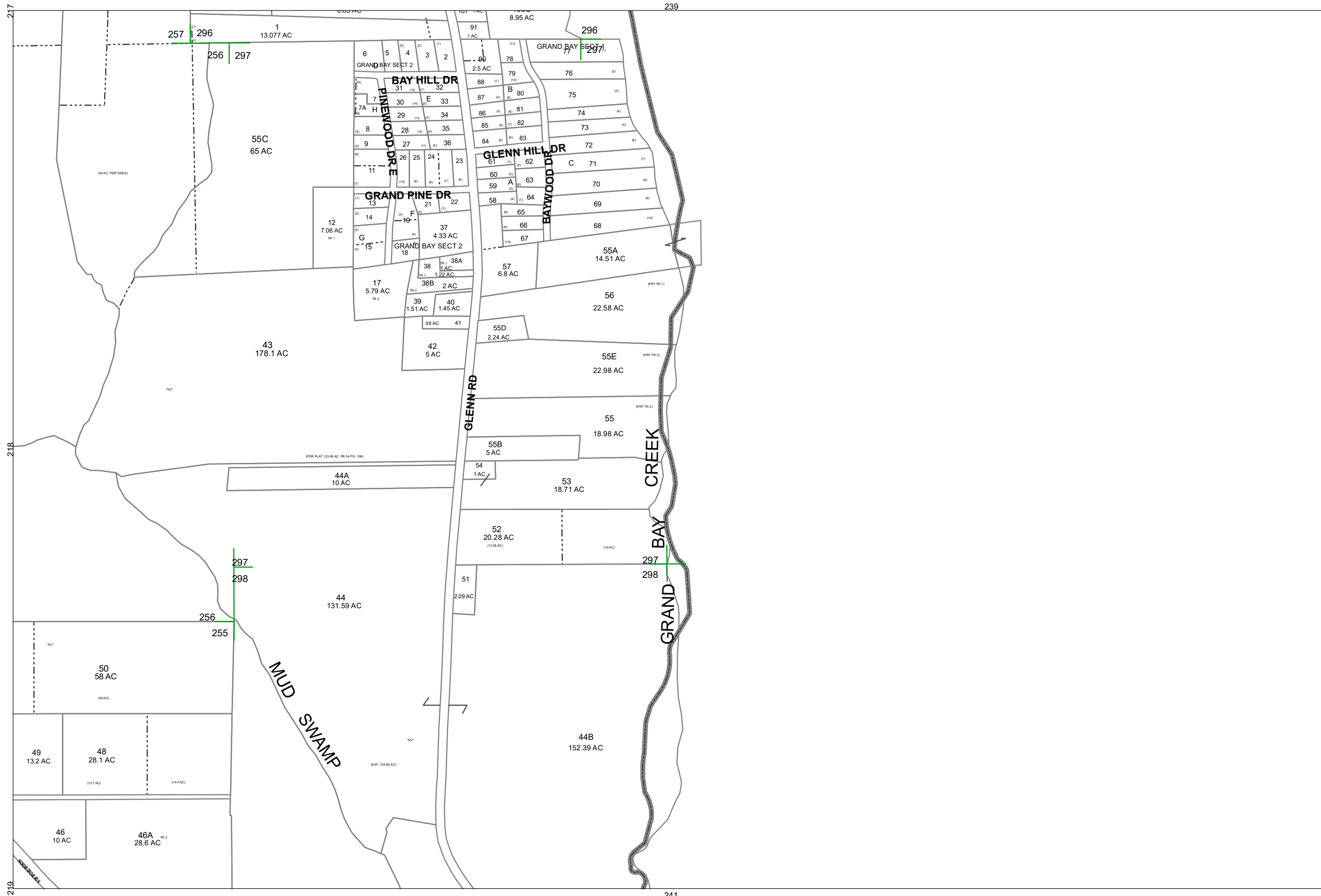
LOWNDES COUNTY
GEORGIA

1 inch = 800 feet



VALOR
Sgic

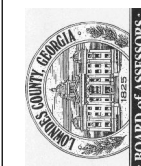
239



2024

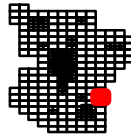
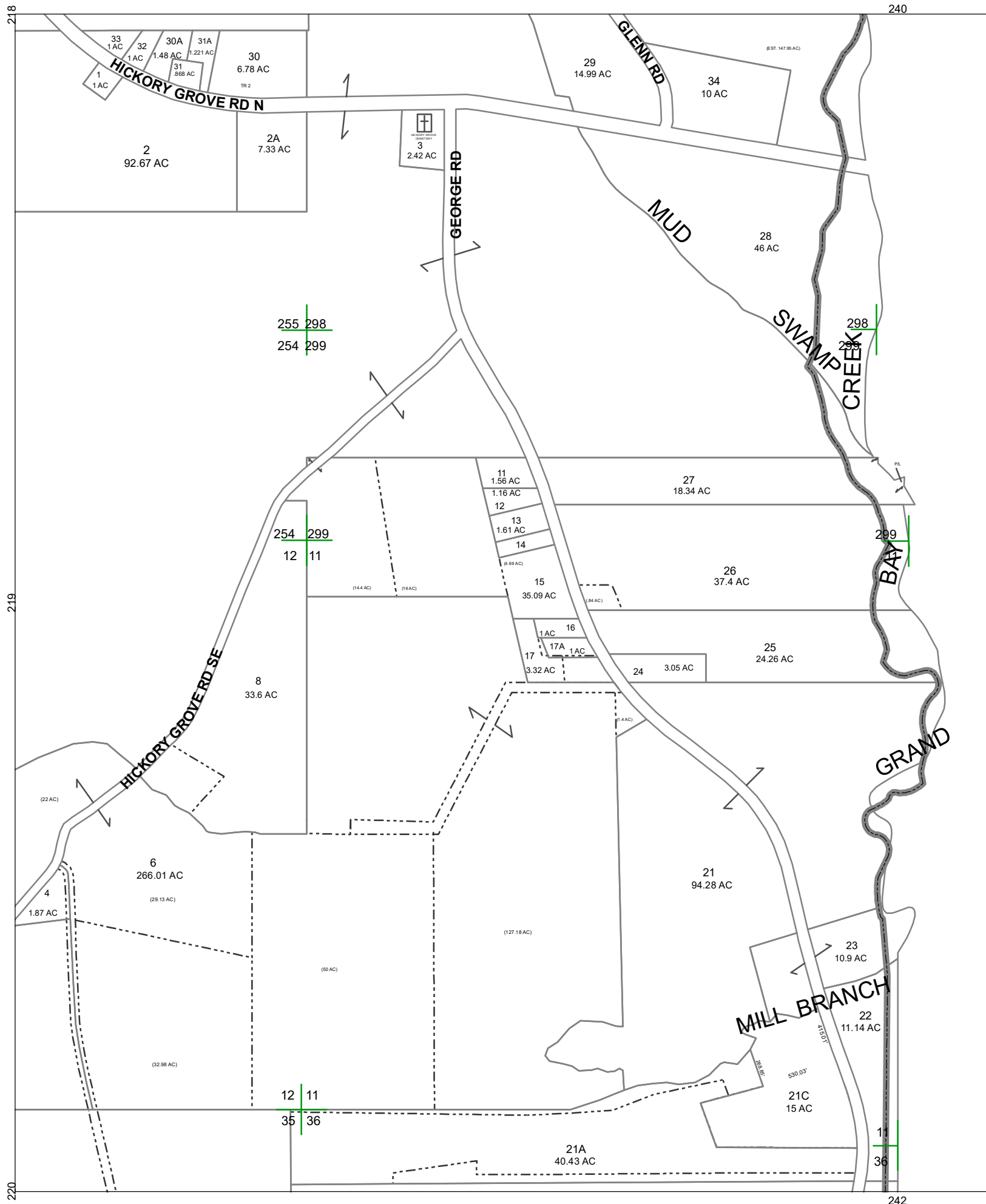
LOWNDES COUNTY
GEORGIA

1 inch = 800 feet



VALOR
VALUATION SERVICES
SGIC

240



2024

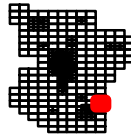
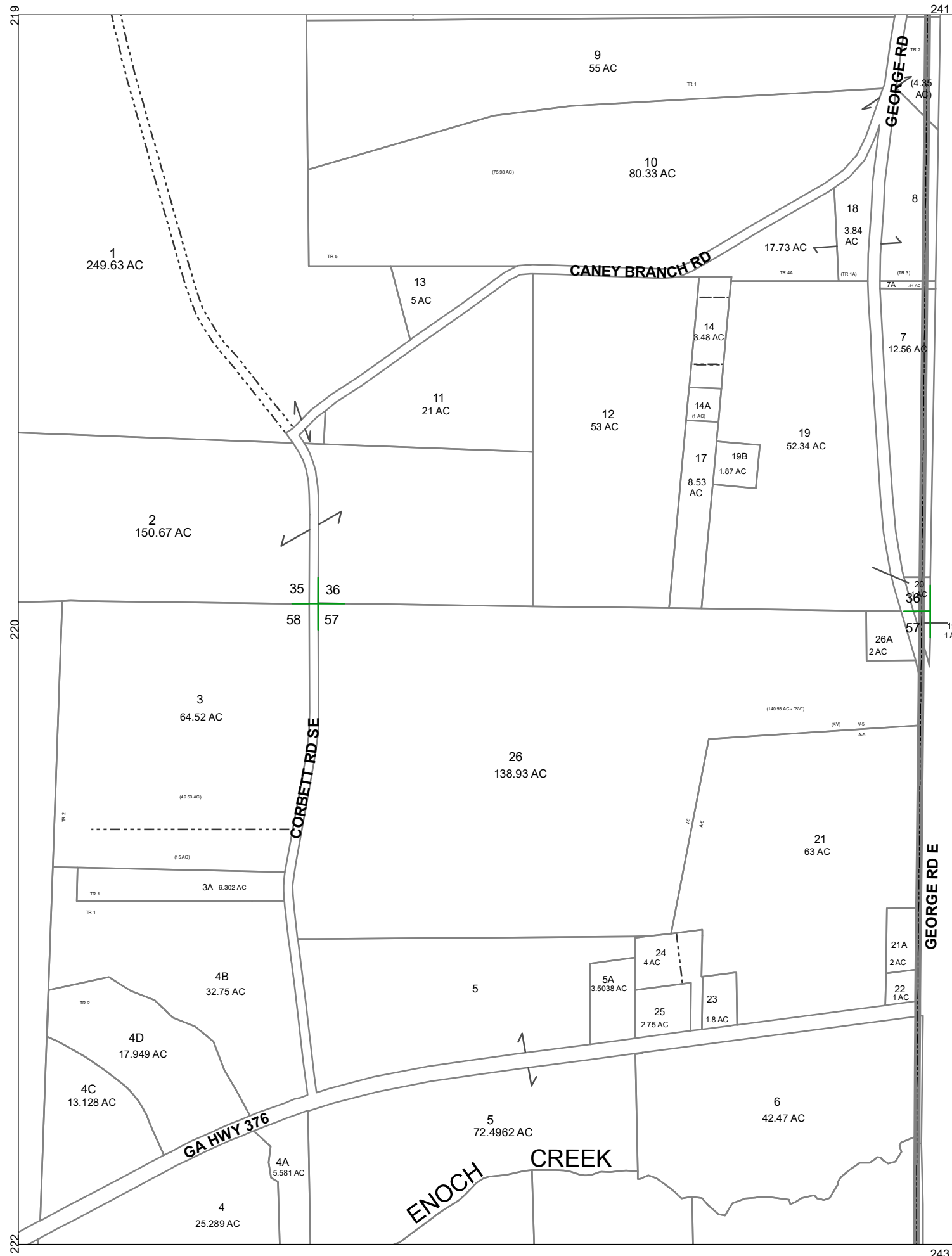
LOWNDES COUNTY
GEORGIA

1 inch = 800 feet



VALOR
SGIC

241



2024

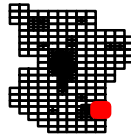
LOWNDES COUNTY
GEORGIA

1 inch = 800 feet



VALOR
SGIC

242



2024

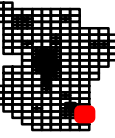
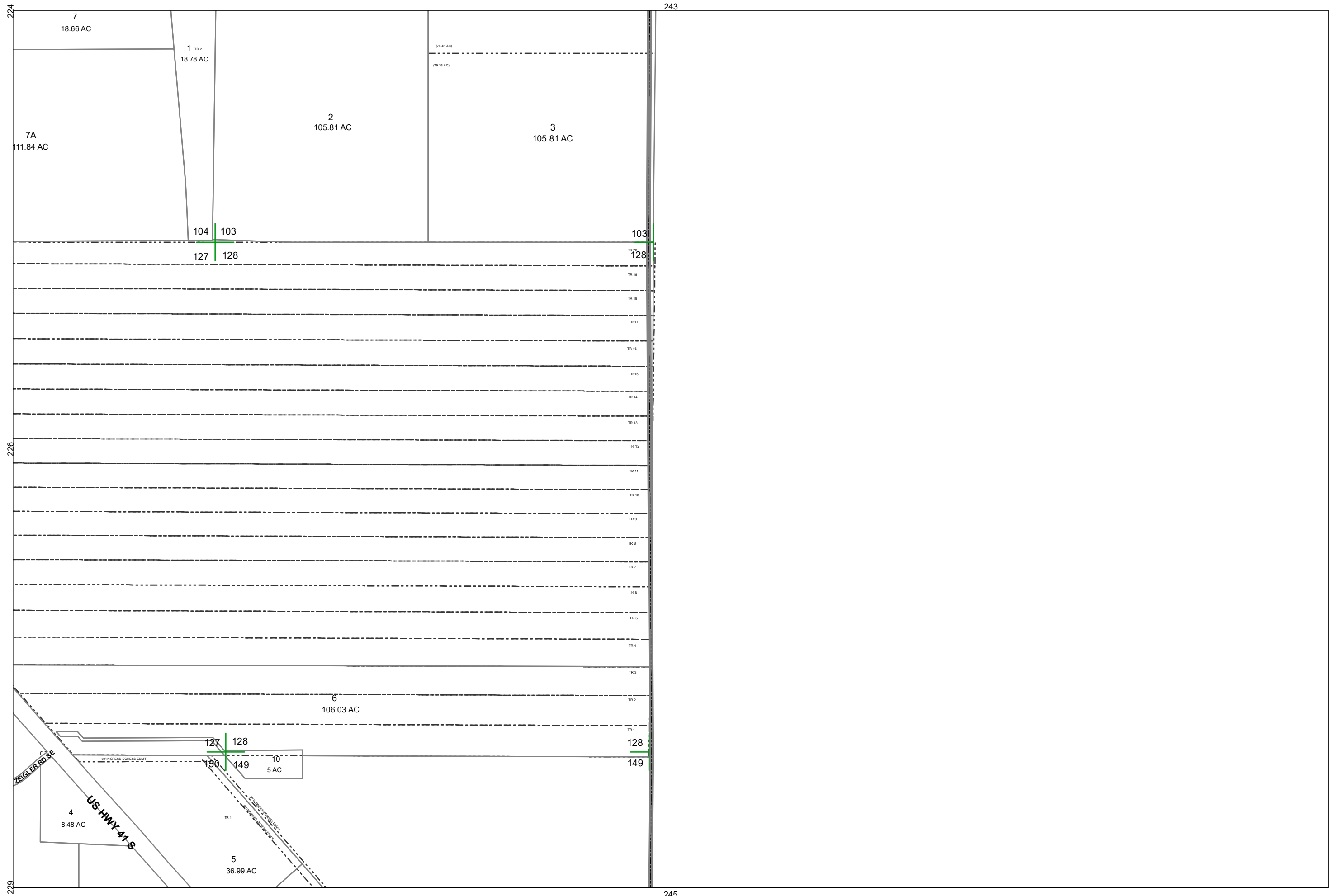
LOWNDES COUNTY
GEORGIA

1 inch = 800 feet



VALOR
SGIC

243



2024

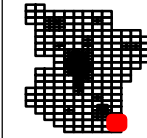
LOWNDES COUNTY
GEORGIA

1 inch = 800 feet



VALOR
SGIC

244



2024

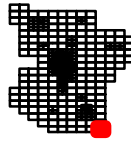
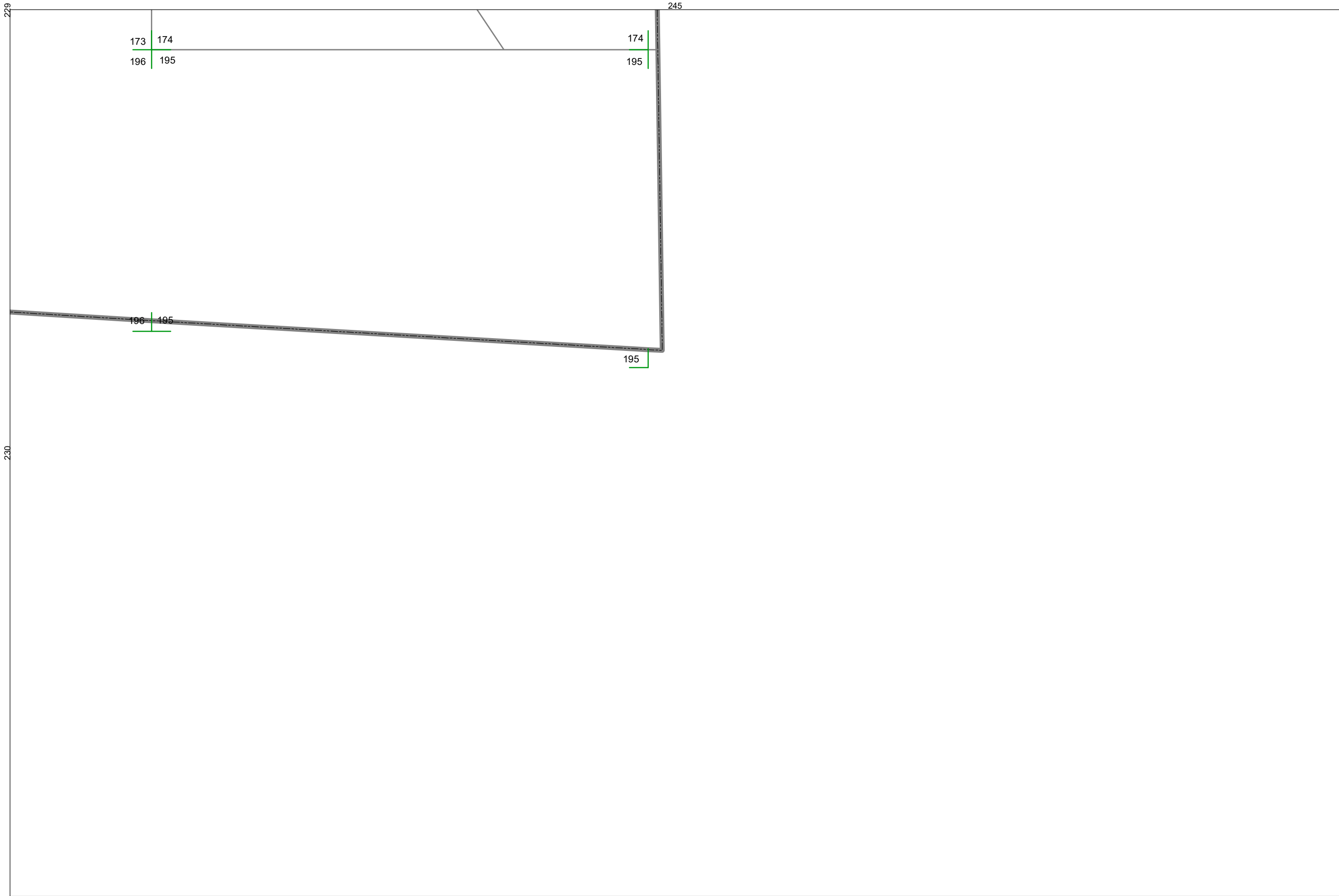
LOWNDES COUNTY
GEORGIA

1 inch = 800 feet



VALOR
SGIC

245



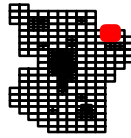
2024

LOWNDES COUNTY
GEORGIA

1 inch = 800 feet



VALOR
Valuation Services
 A Division of
SGIC
SPATIAL GEOTECHNOLOGY



2024

LOWNDES COUNTY
GEORGIA

258

1 inch = 800 feet

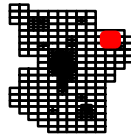
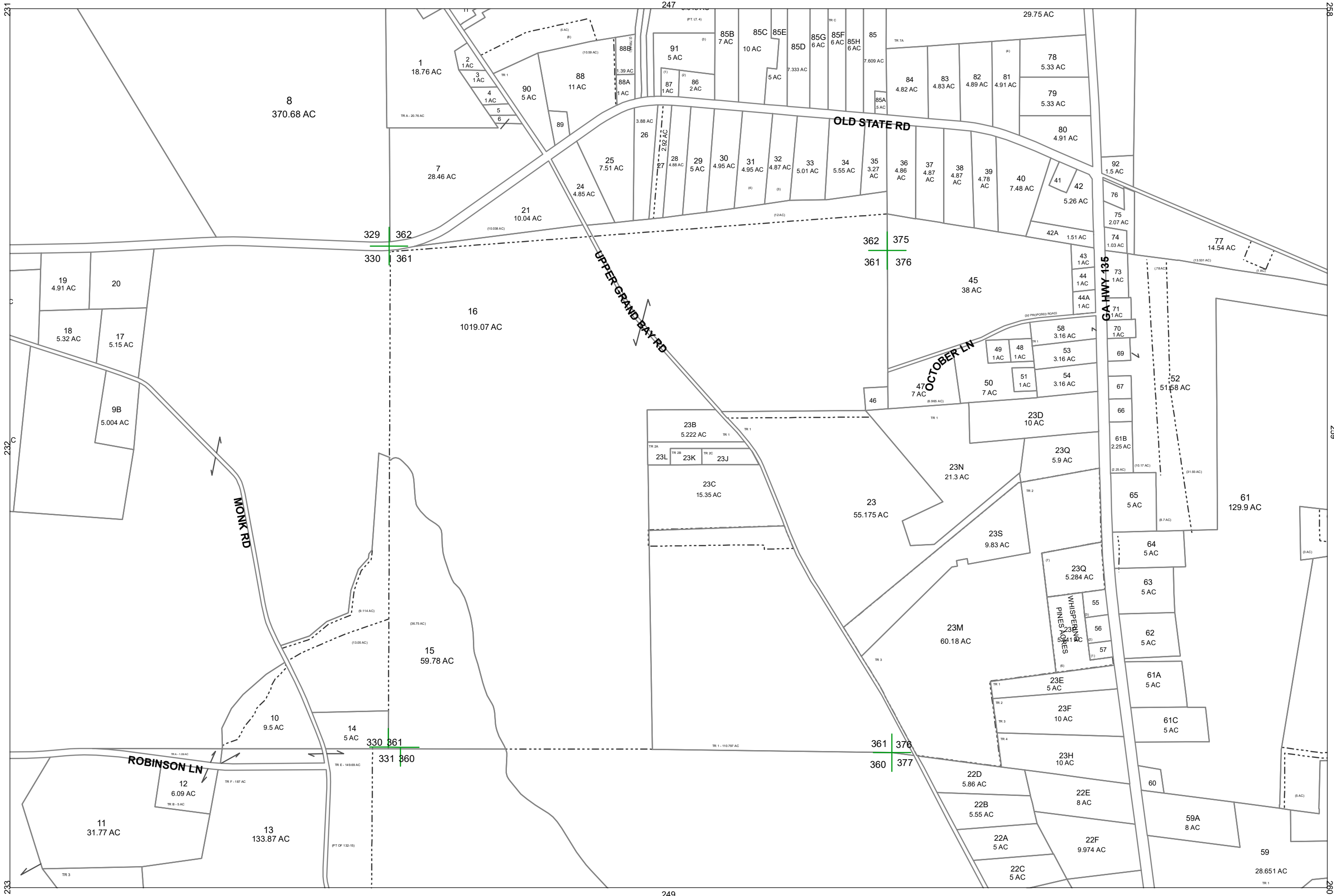


VALOR
SGIC
SPATIAL GEOTECH

247

259





2024

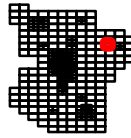
LOWNDES COUNTY
GEORGIA

1 inch = 800 feet



VALOR
SGIC

248



2024
 LOWNDES COUNTY
 GEORGIA

1 inch = 400 feet



VALOR
 VALUATION ANALYSIS & REPORTING
 SOLUTIONS CORPORATION

249