

2024

LOWNDES COUNTY  
GEORGIA

132A

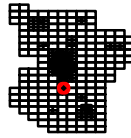
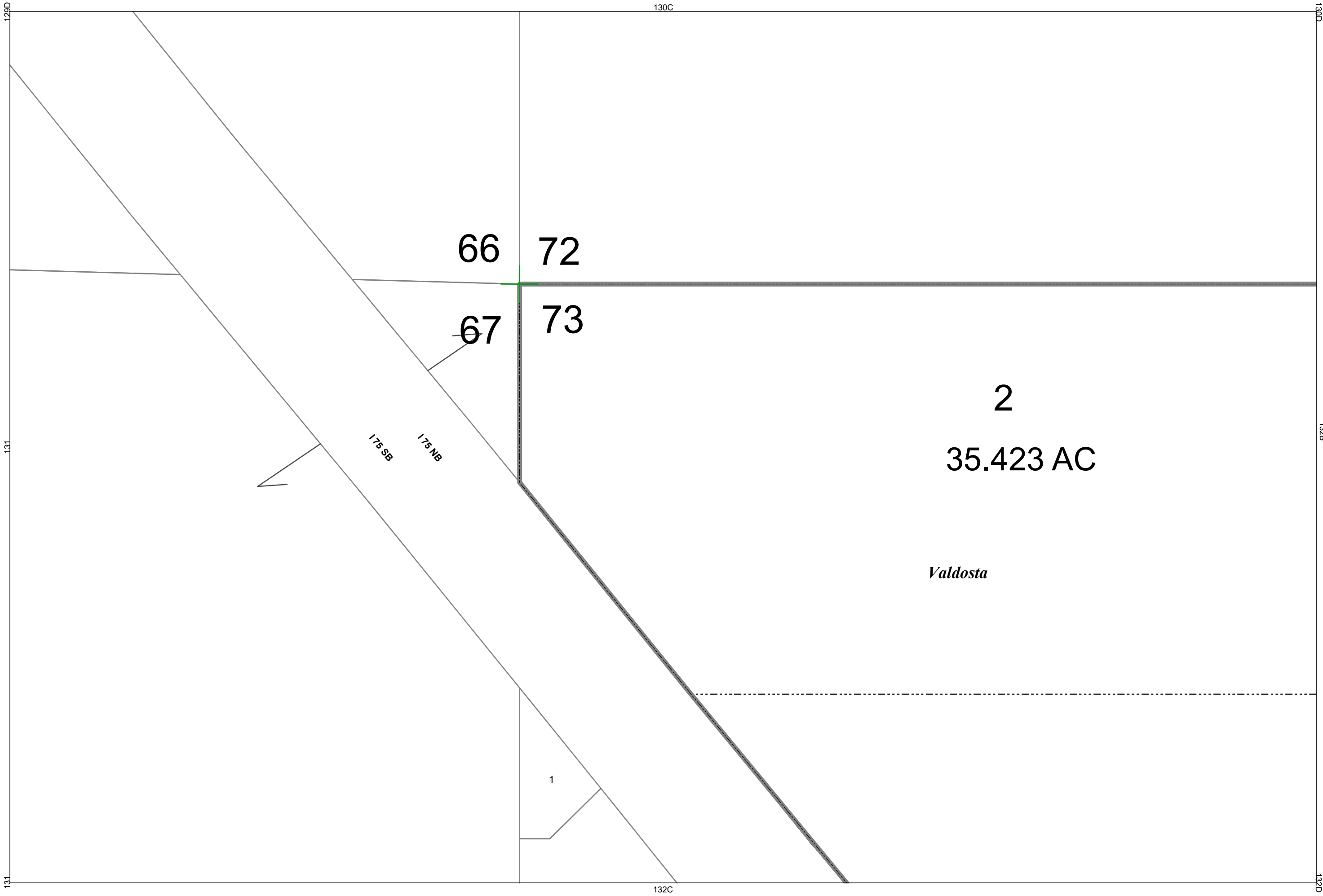
1 inch = 400 feet



VALOR  
sgic

131

134



2024

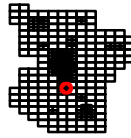
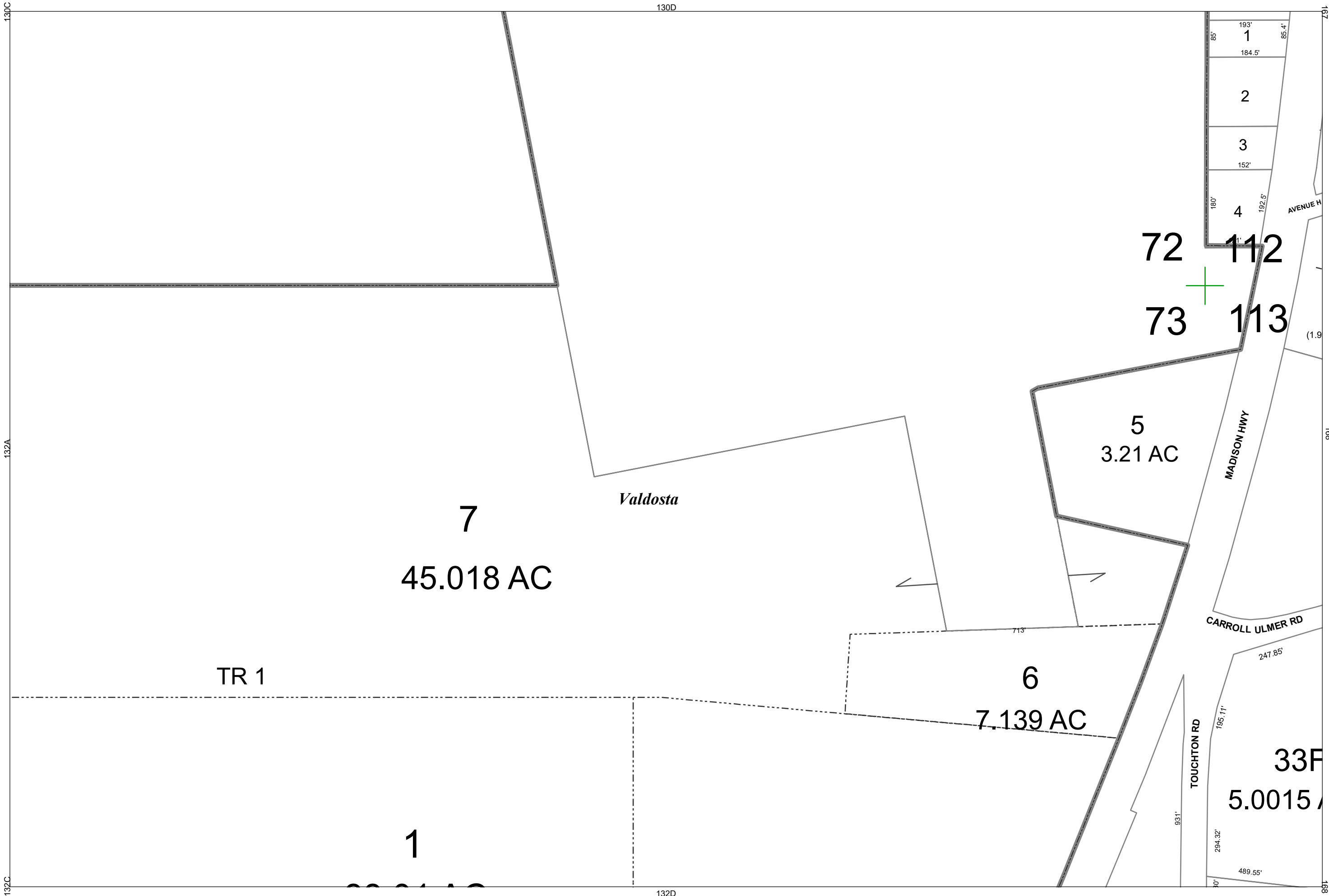
LOWNDES COUNTY  
GEORGIA

1 inch = 200 feet



VALOR  
SGIC

132A



2024

LOWNDES COUNTY  
GEORGIA

1 inch = 200 feet



BOARD OF ASSESSORS

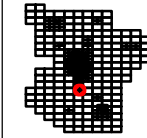
**VALOR**  
VALUATION ANALYSIS REPORT  
SGIC  
SPATIAL GEOGRAPHIC INFORMATION SYSTEMS

132B

131  
131  
133

132A

132B  
132D  
134



2024

LOWNDES COUNTY  
GEORGIA

1 inch = 200 feet



VALOR  
SGIC  
SPATIAL GEOSPATIAL INFORMATION SYSTEMS

132C

*Valdosta*

1

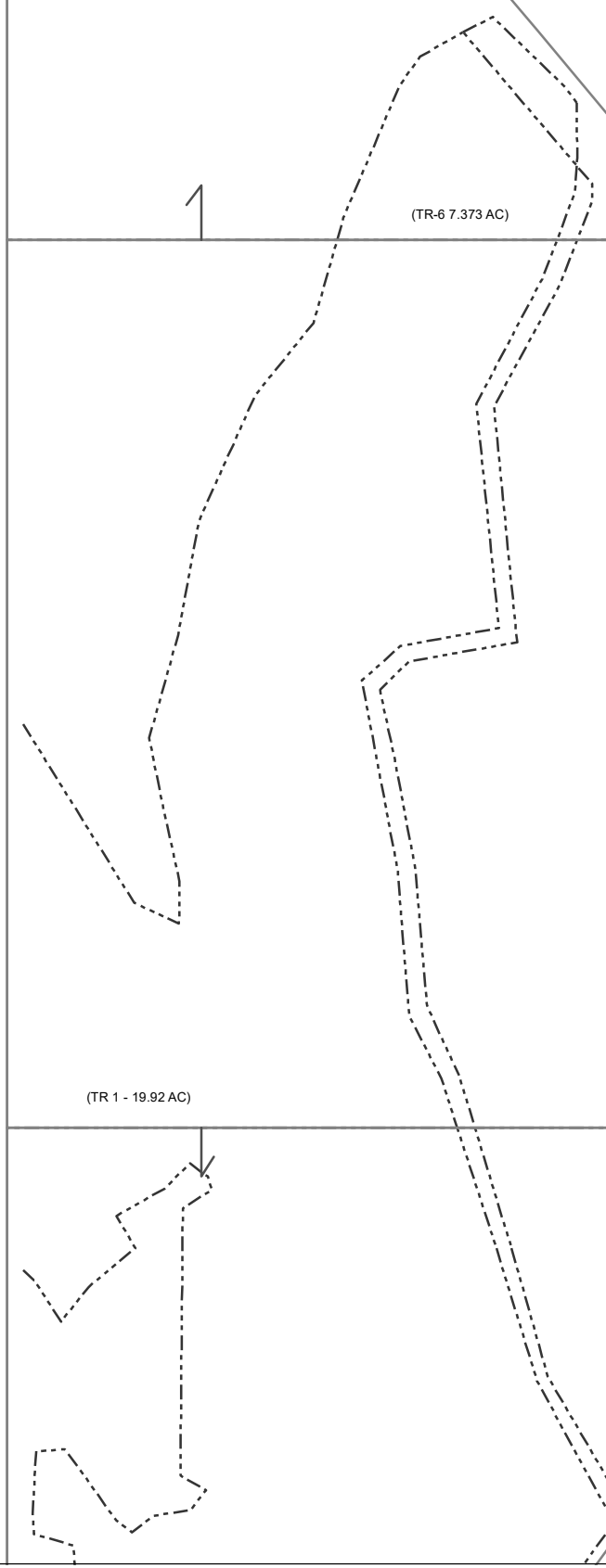
(TR-6 7.373 AC)

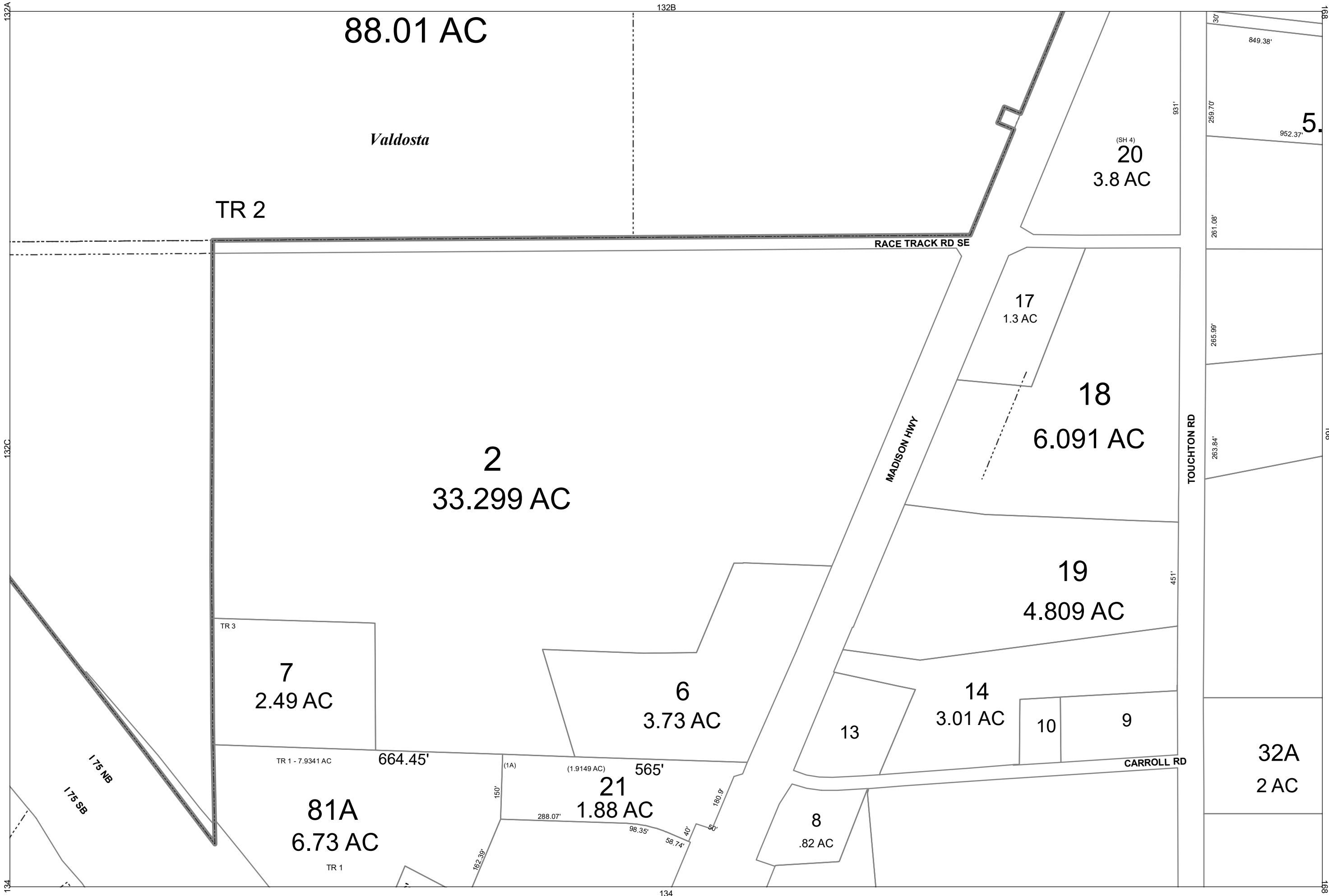
175 NB  
175 SB

1  
26.27 AC

(TR 1 - 19.92 AC)

(TR 2 - 6.35 AC)





88.01 AC

Valdosta

TR 2

2  
33.299 AC

(SH 4)  
20  
3.8 AC

17  
1.3 AC

18  
6.091 AC

19  
4.809 AC

7  
2.49 AC

6  
3.73 AC

14  
3.01 AC

10

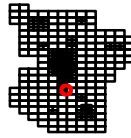
9

81A  
6.73 AC

(1A)  
21  
1.88 AC

8  
.82 AC

32A  
2 AC



2024

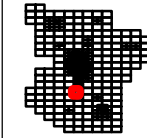
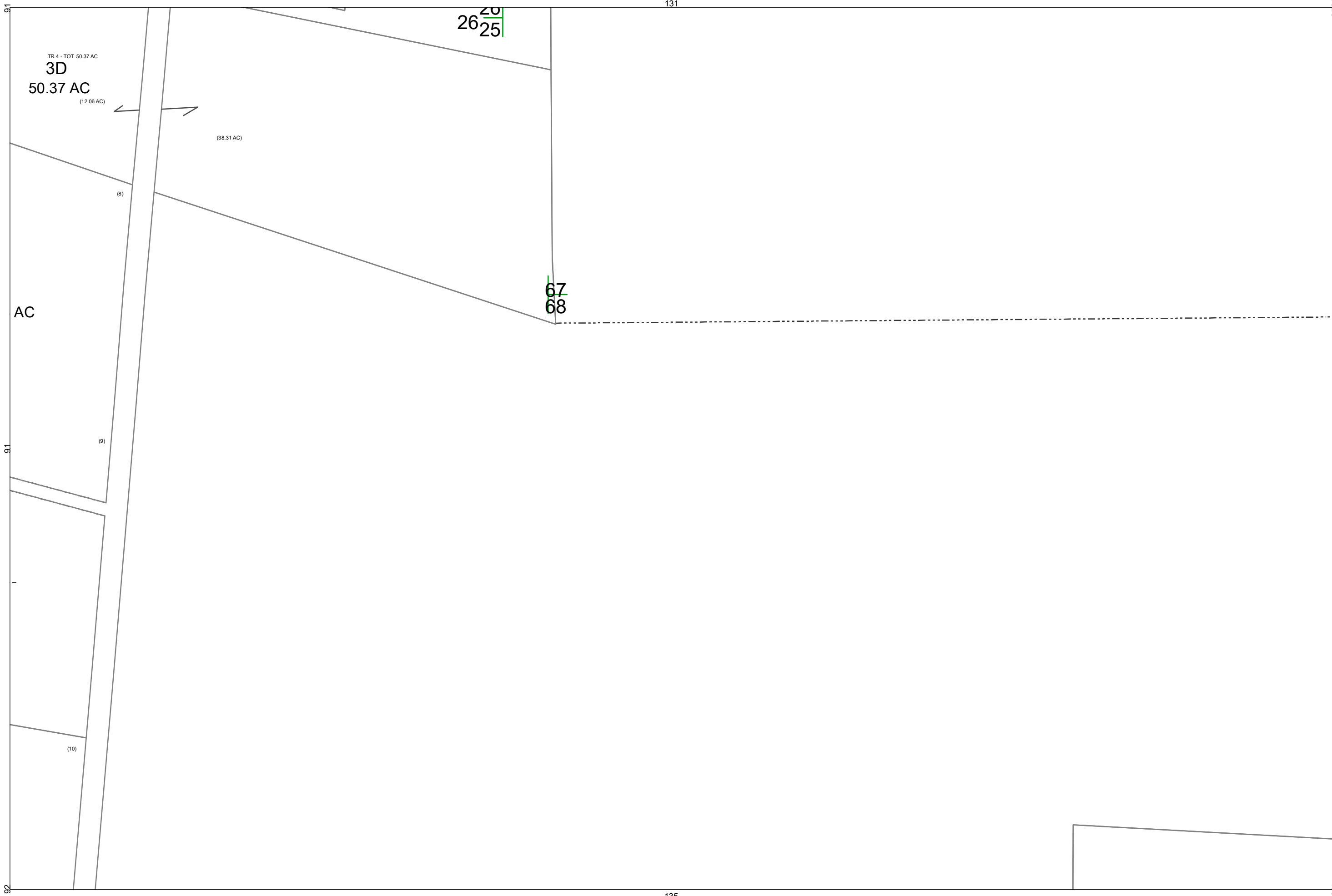
LOWNDES COUNTY  
GEORGIA

1 inch = 200 feet



VALOR  
SGIC

132D



2024

**LOWNDES COUNTY**  
**GEORGIA**

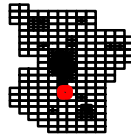
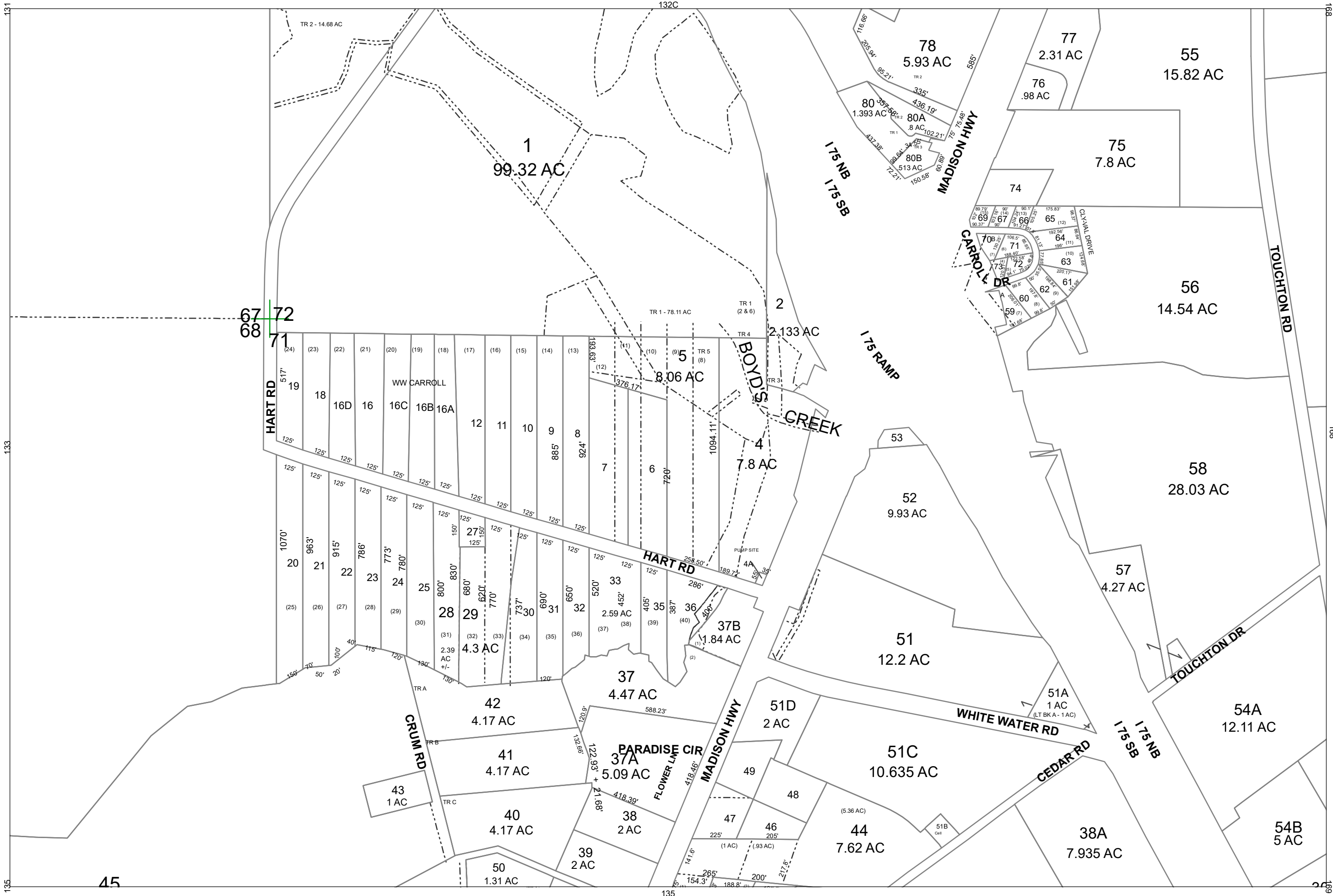
134

1 inch = 400 feet



**VALOR**  
Valuation Services  
**sgic**  
SPATIAL GEOMETRIC INFORMATION CORPORATION

133



2024

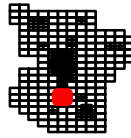
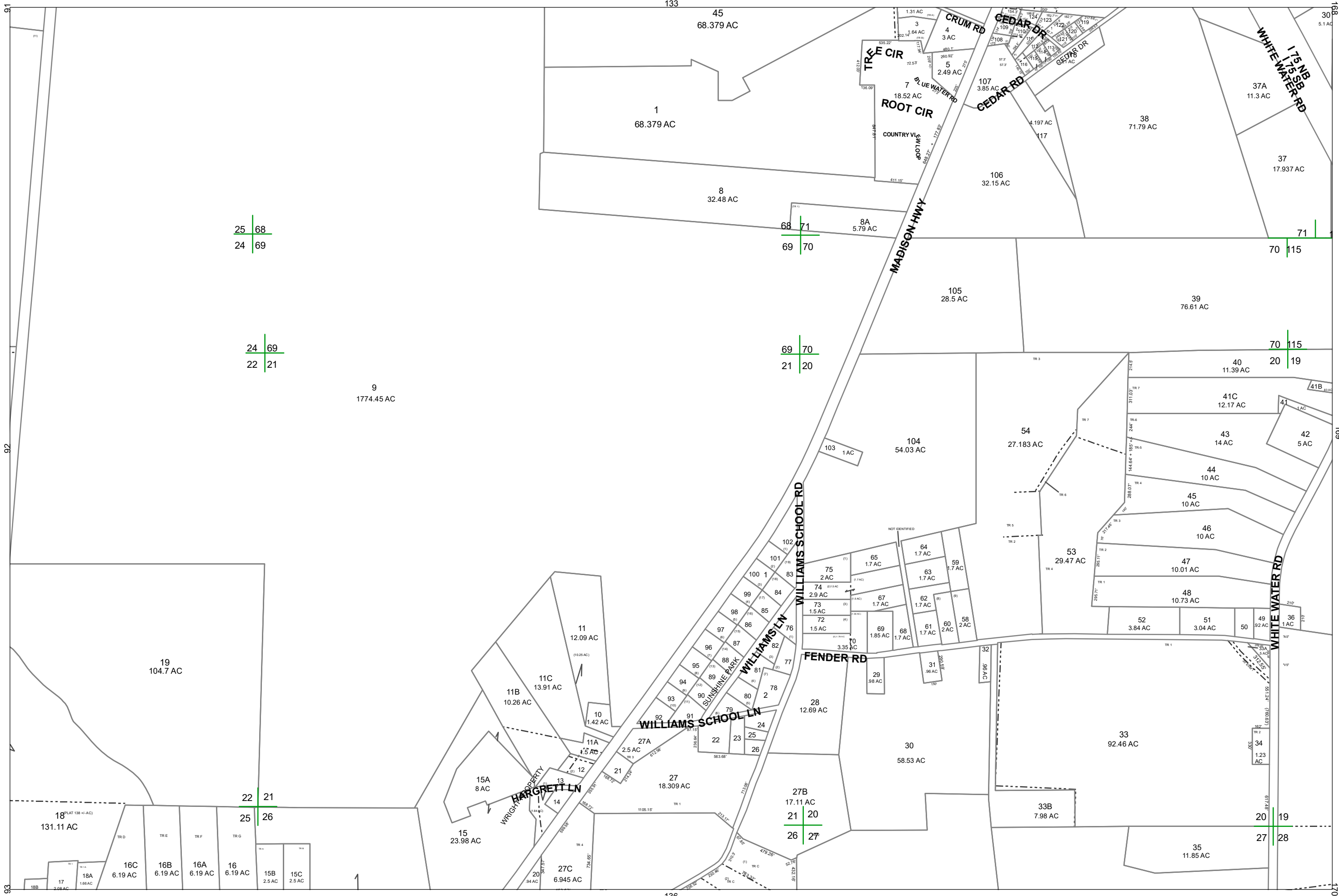
LOWNDES COUNTY  
GEORGIA

1 inch = 400 feet



VALOR  
SGIC

134



2024

LOWNDES COUNTY  
GEORGIA

1 inch = 800 feet

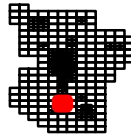
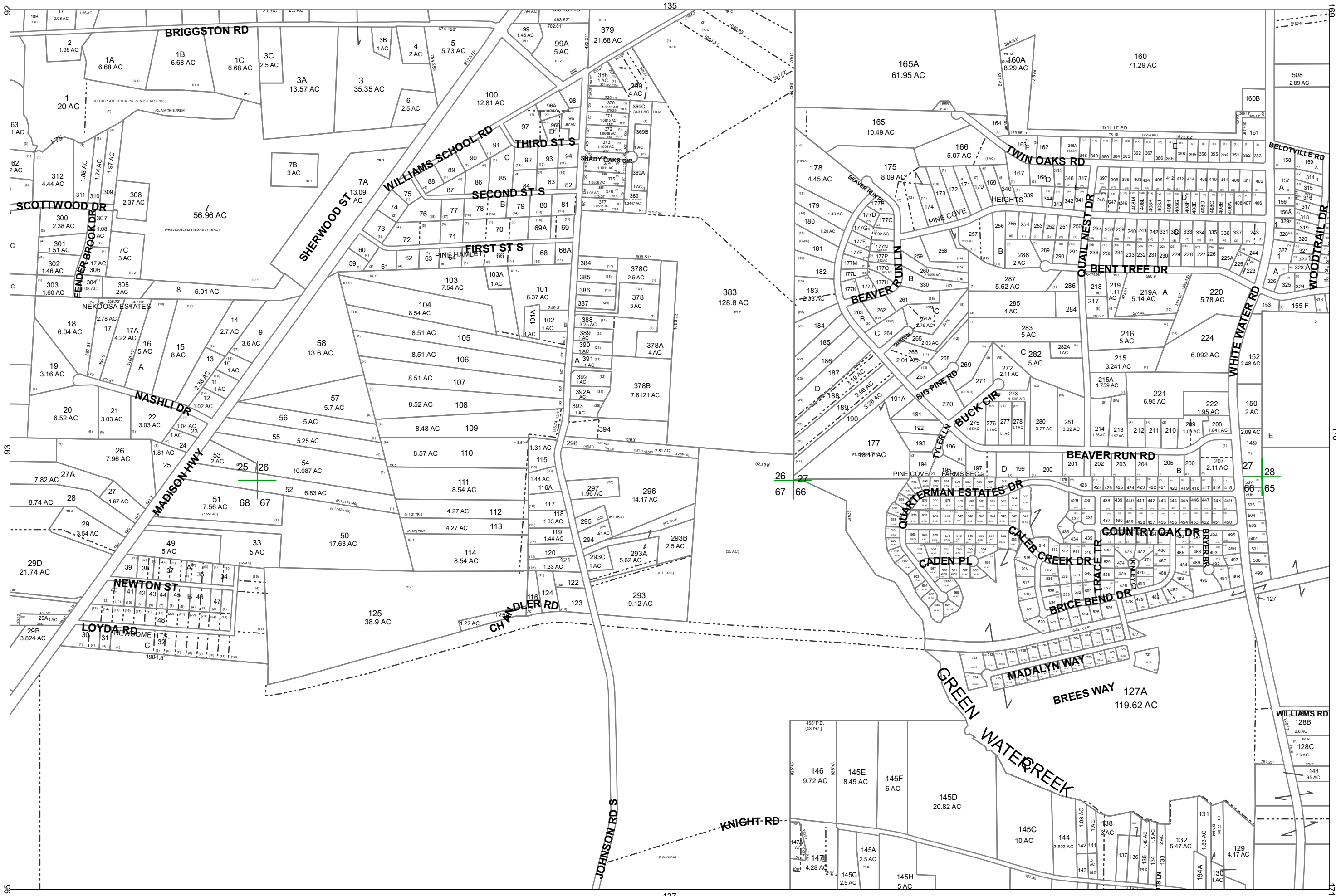


BOARD OF ASSESSORS

VALOR  
SPIC

135





2024

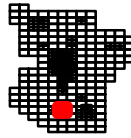
LOWNDES COUNTY  
GEORGIA

1 inch = 800 feet



VALOR  
SPTC  
BOARD OF ASSESSORS

136



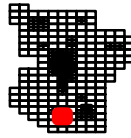
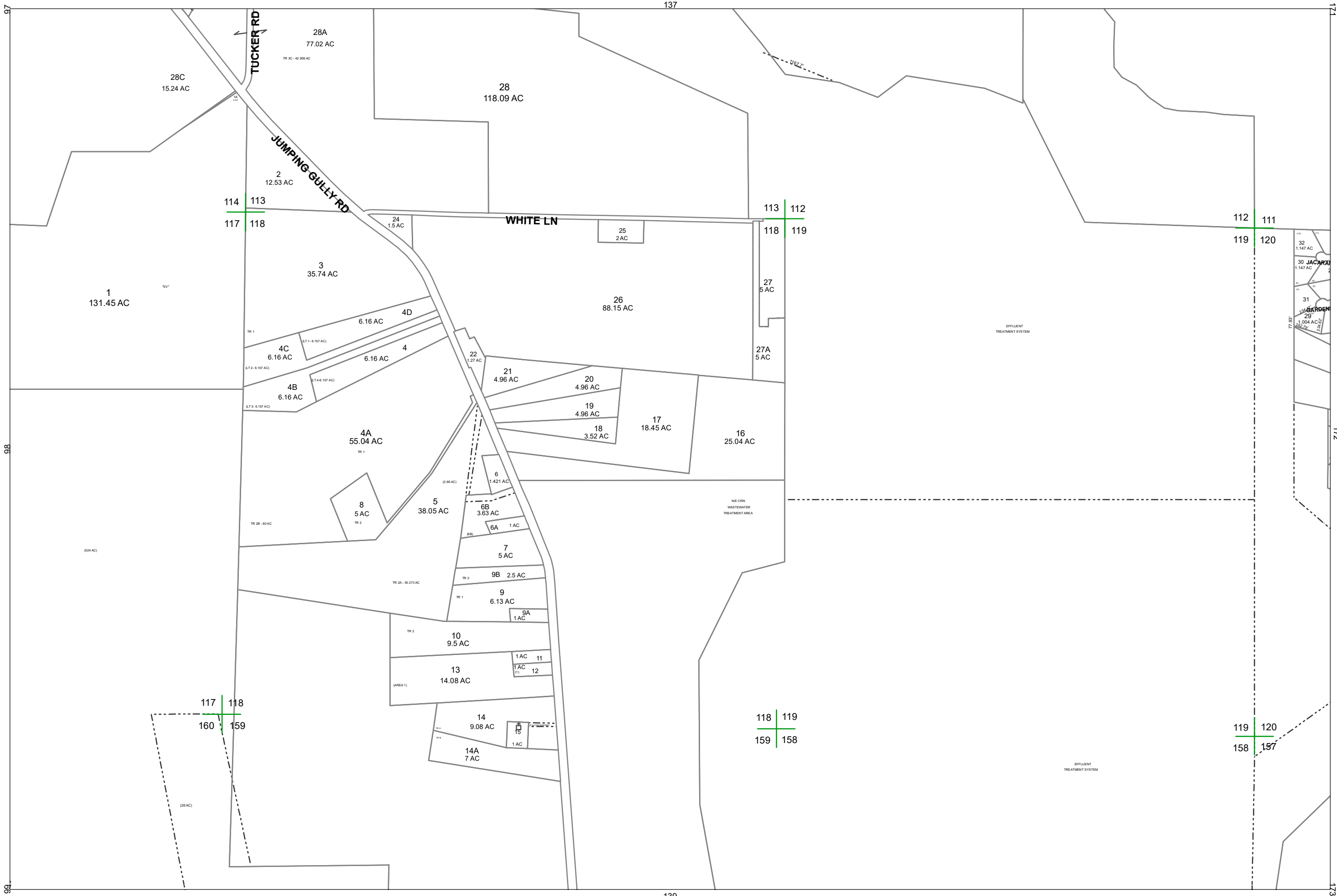
2024  
LOWNDES COUNTY  
GEORGIA

1 inch = 800 feet



VALOR  
sPIC

137



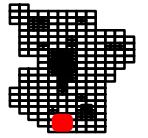
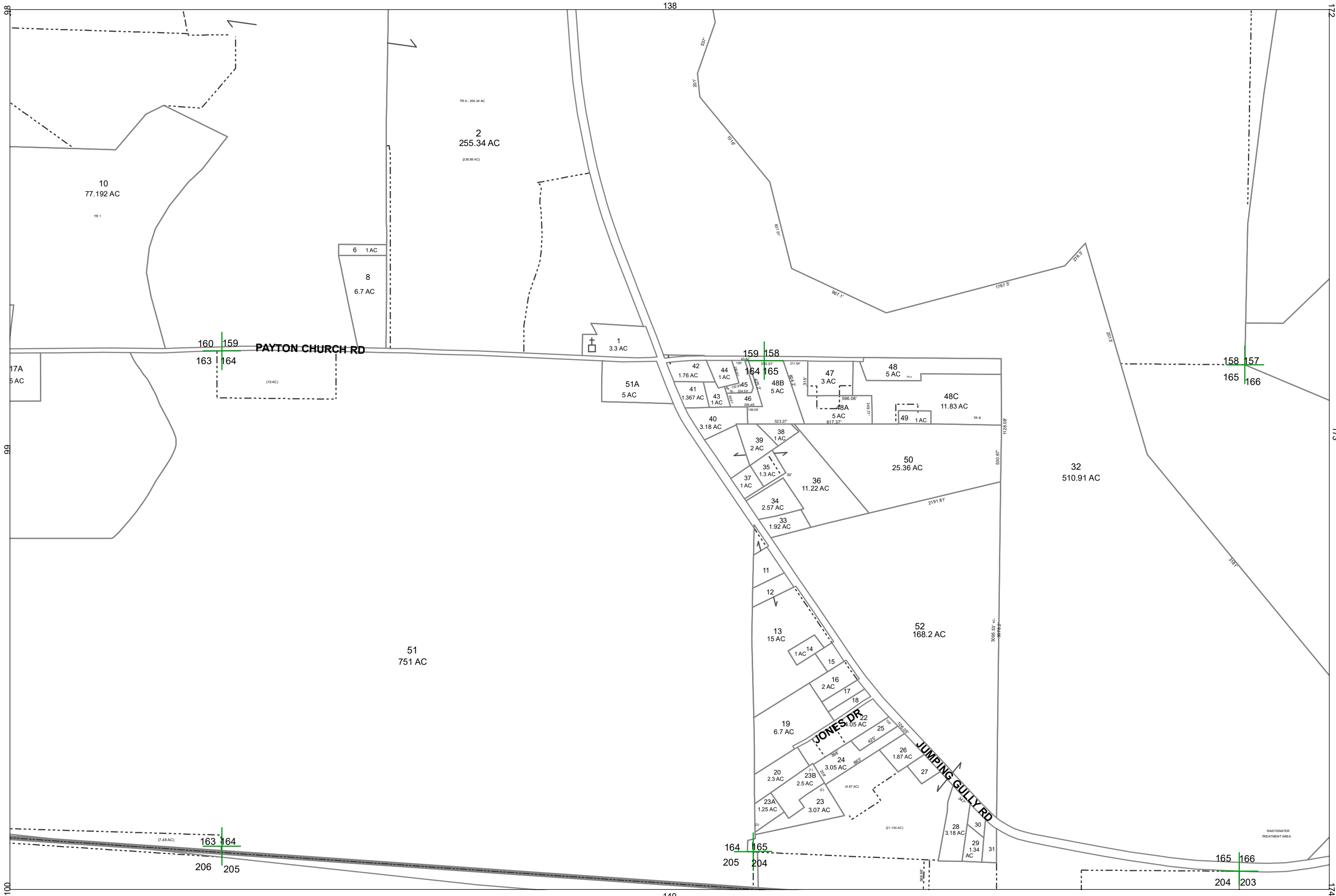
2024  
**LOWNDES COUNTY  
 GEORGIA**

1 inch = 800 feet



**VALOR**  
 Valuation Services • Expert Geographic Information Systems  
**SGIC**  
 Surveying • GIS • Mapping • Aerial Photography • Drone Services

138



2024  
**LOWNDES COUNTY**  
**GEORGIA**

1 inch = 800 feet



**VALOR**  
 VALUATION & APPRAISAL SERVICES  
 A DIVISION OF  
**SGIC**  
 SOUTHERN GEORGIA INVESTMENT CORPORATION

139