

2015

LOWNDES COUNTY
GEORGIA

78A
1 inch = 400 feet



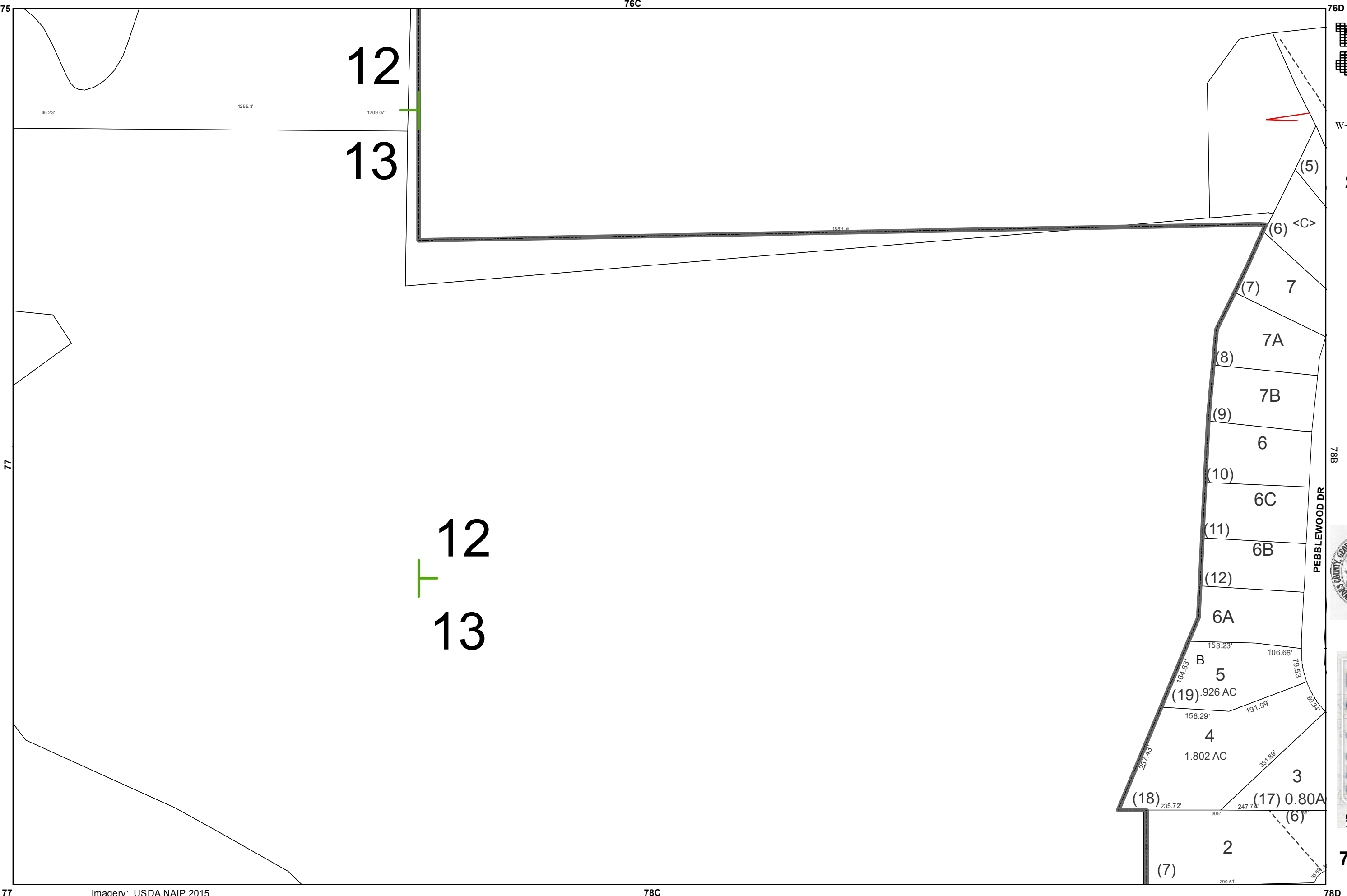
77

56

Imagery: USDA NAIP 2015.

79A

80A

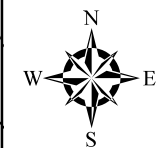
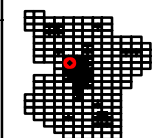


12

13

12

13



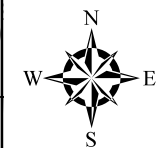
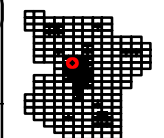
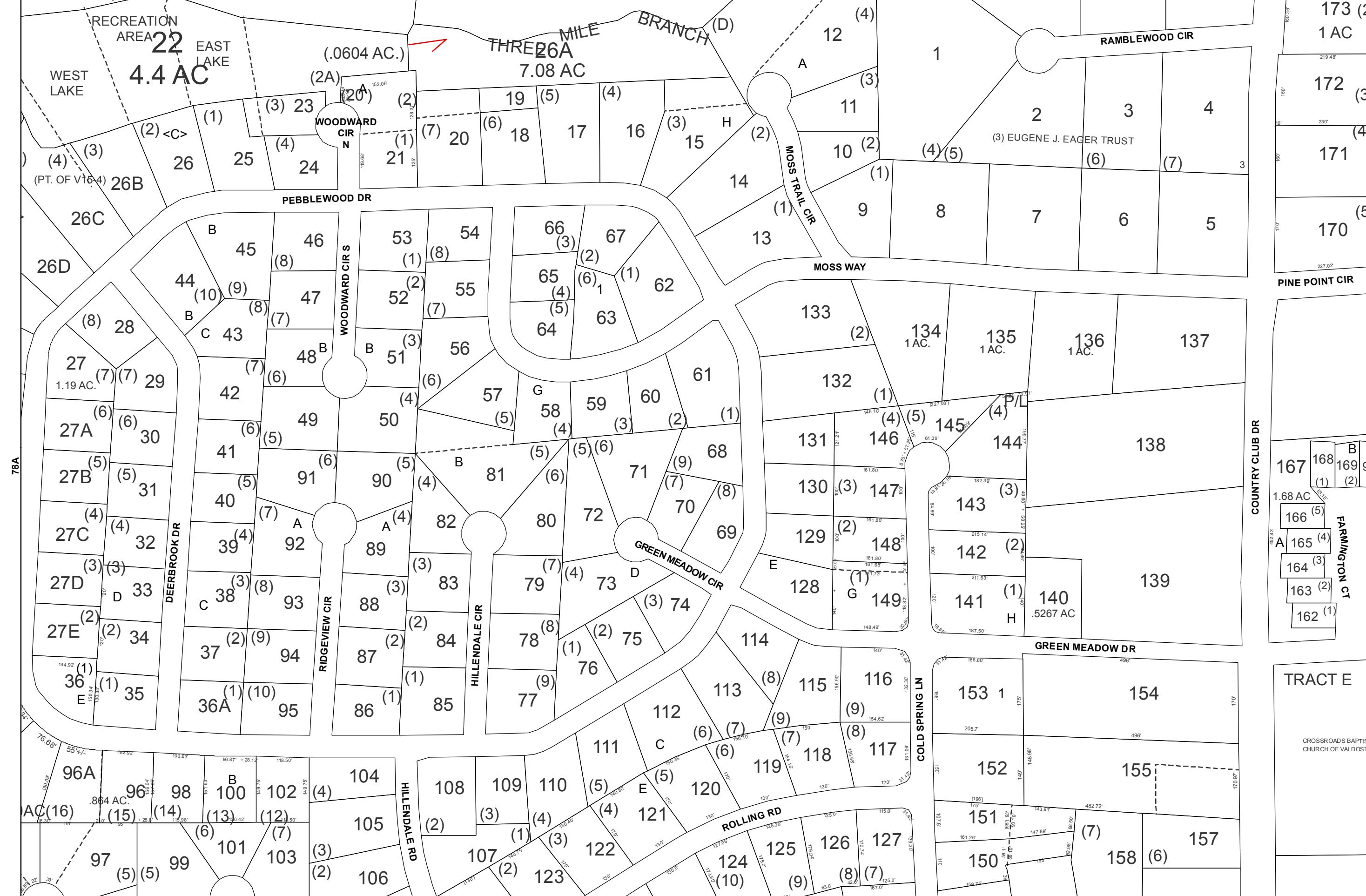
2015

LOWNDES COUNTY
GEORGIA

1 inch = 200 feet



78A



2015

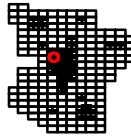
LOWNDES COUNTY
GEORGIA

1 inch = 200 feet



78B

22
204.832 AC



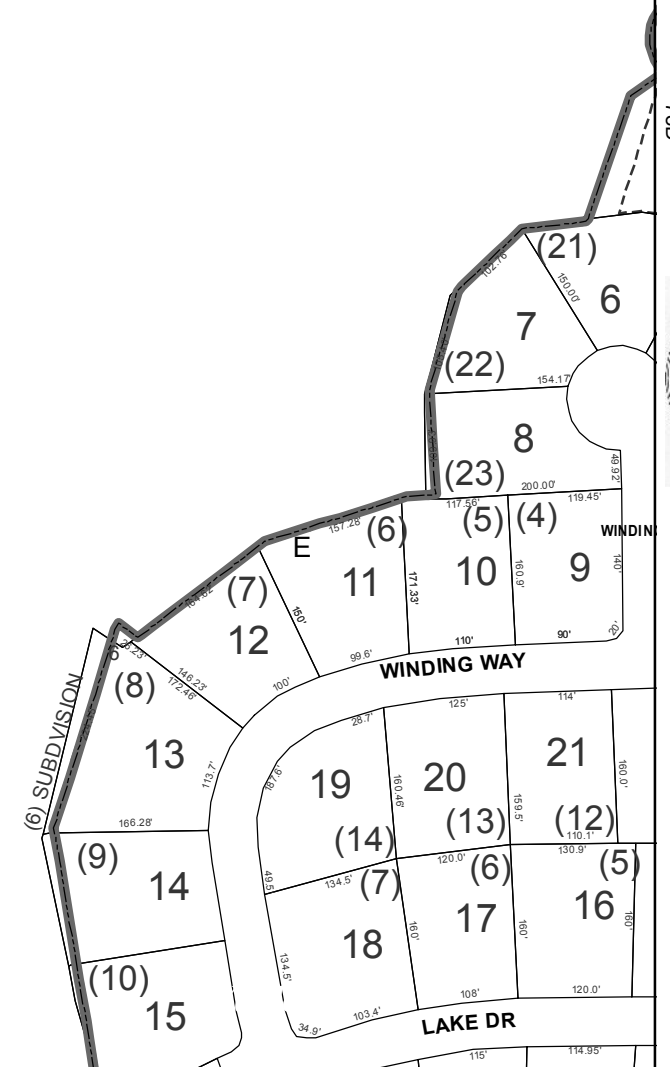
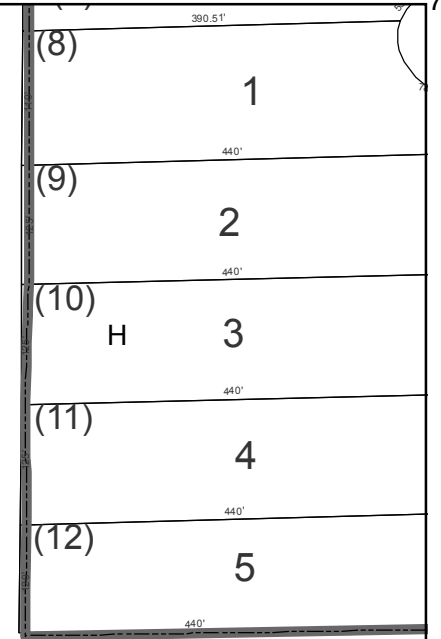
2015

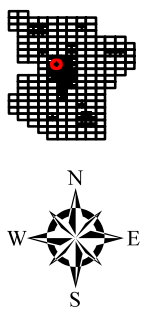
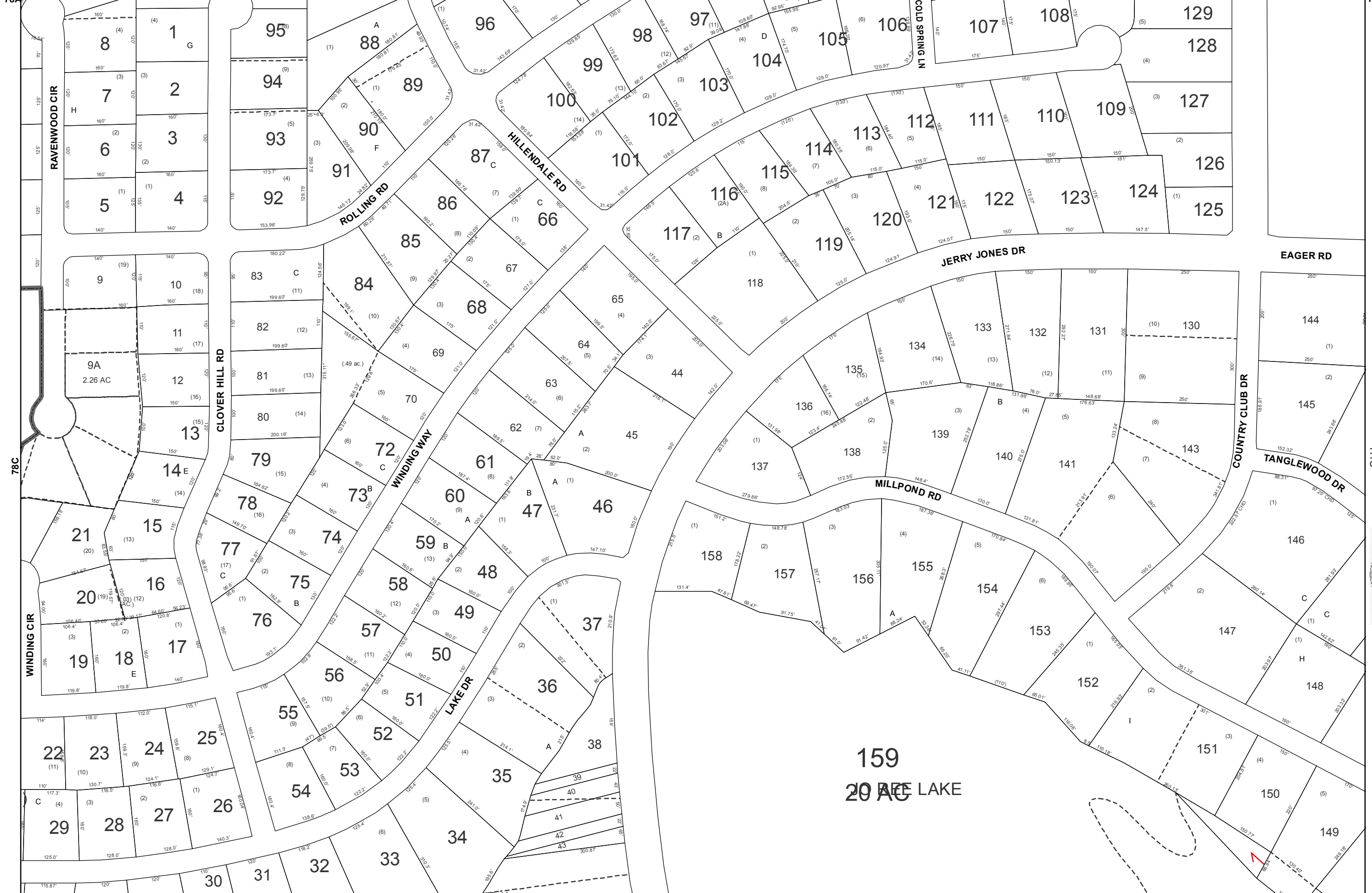
LOWNDES COUNTY
GEORGIA

1 inch = 200 feet



78C

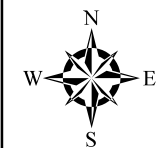
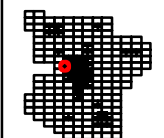
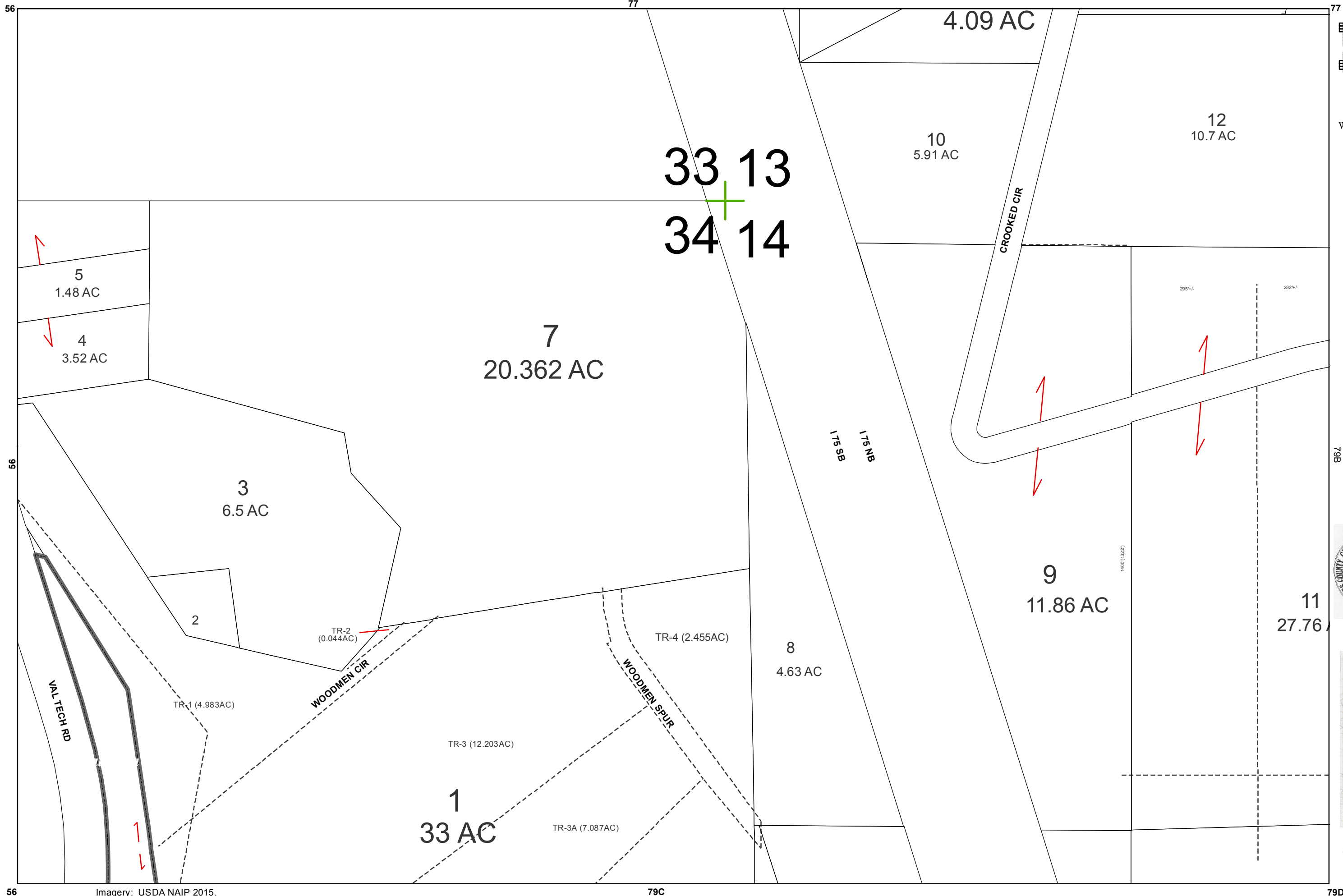




2015
 LOWNDES COUNTY
 GEORGIA

1 inch = 200 feet





2015

LOWNDES COUNTY
GEORGIA

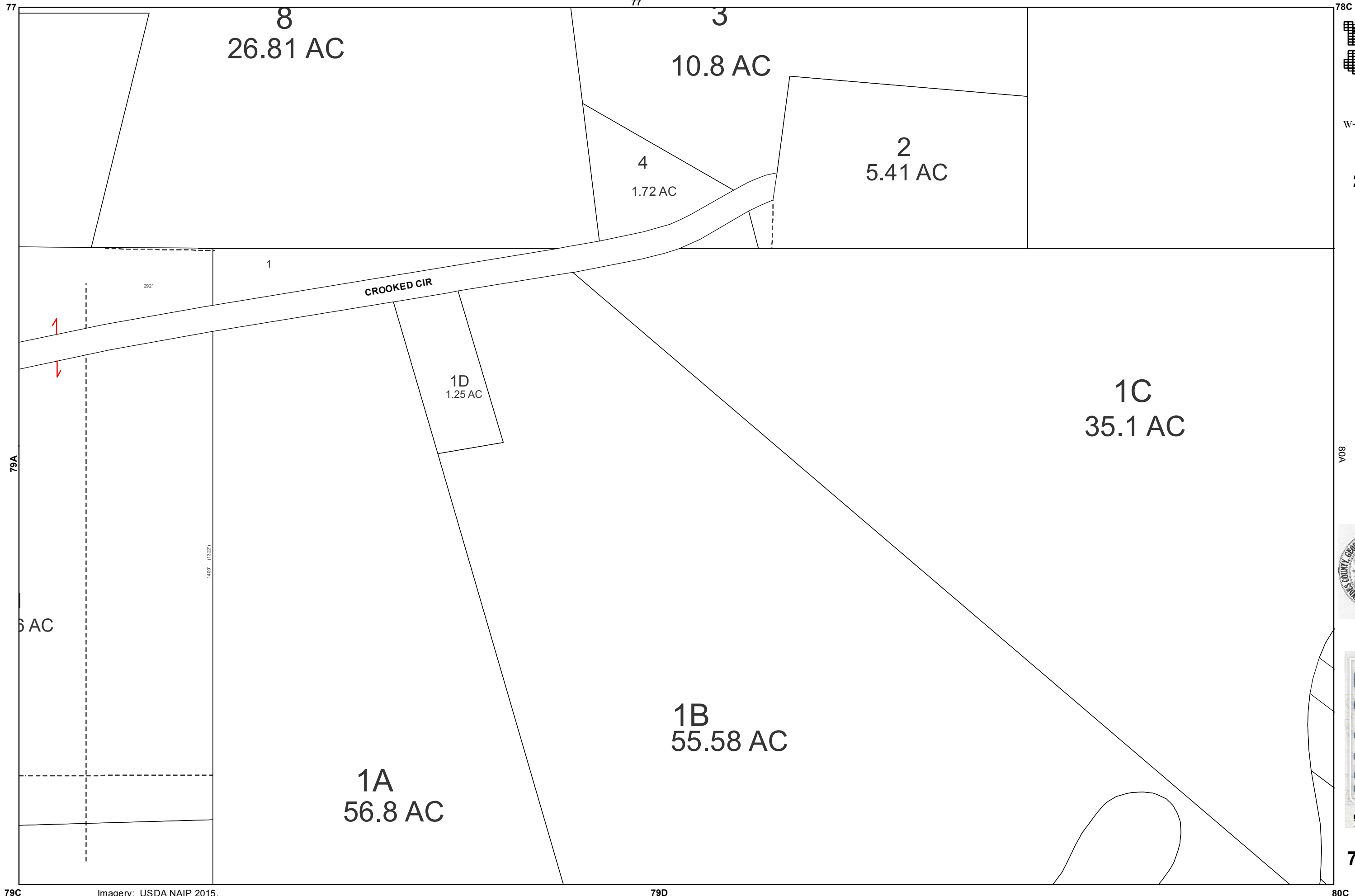
79B
1 inch = 200 feet



BOARD OF ASSESSORS



79A



8
26.81 AC

3
10.8 AC

4
1.72 AC

2
5.41 AC

1
CROOKED CIR

1D
1.25 AC

1C
35.1 AC

1A
56.8 AC

1B
55.58 AC

77

77

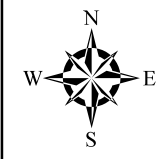
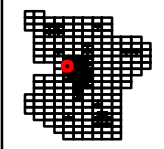
78C

79A

79C

79D

80C



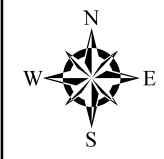
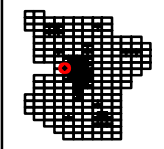
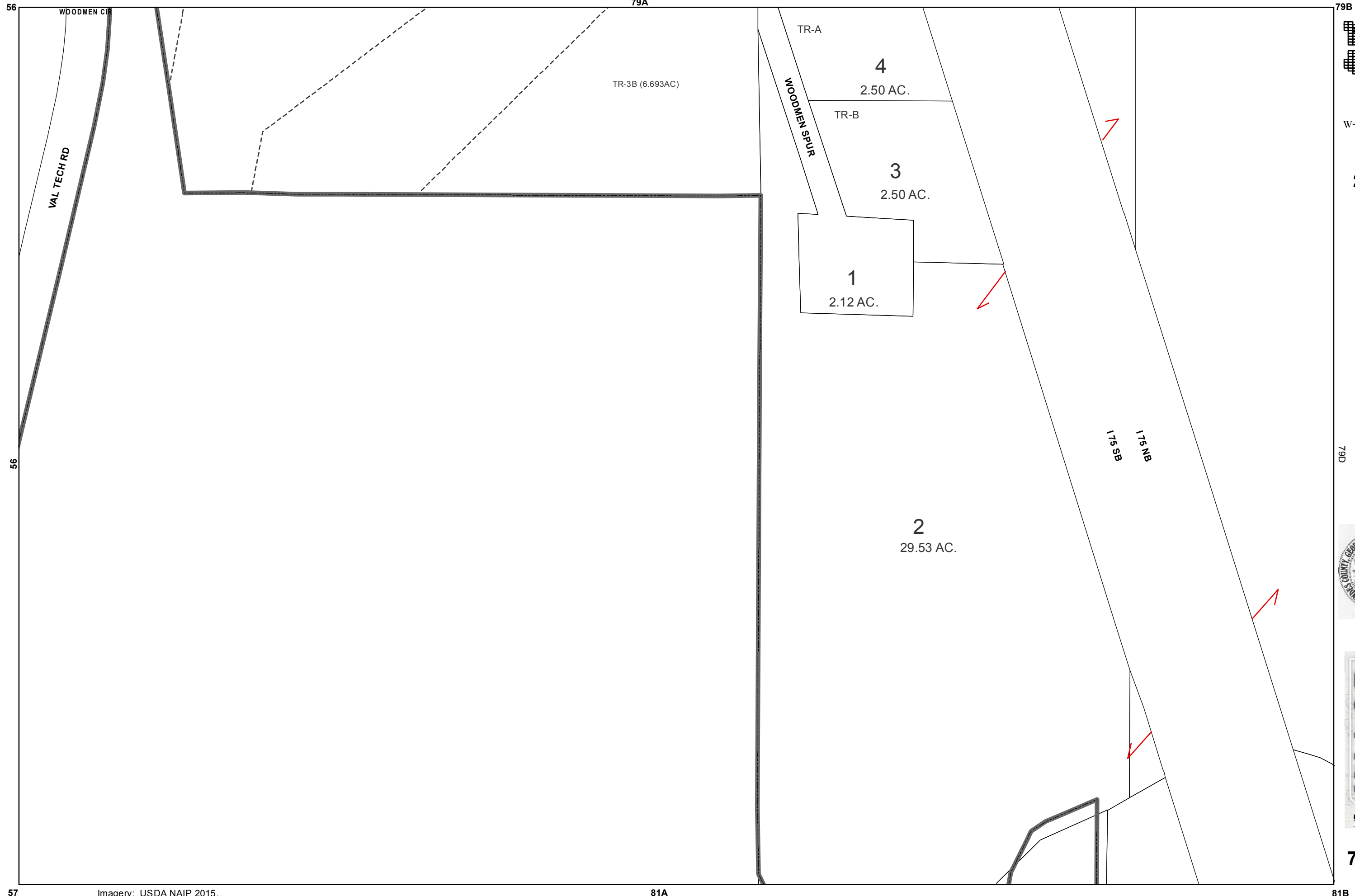
2015

LOWNDES COUNTY
GEORGIA

1 inch = 200 feet



79B



2015

LOWNDES COUNTY
GEORGIA

79D
1 inch = 200 feet

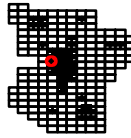


79C

79A

79B

80A



2015

LOWNDES COUNTY
GEORGIA

1 inch = 200 feet



79D

80A

79C

80B

74
34.14 AC

1775.5'

22
6.8 AC

21
1.3 AC

20
1.76 AC

19
2.2 AC

18
2.04 AC

10

(12)

(13)

(11)

(10)

(9)

(8)

(7)

(6)

(5)

(4)

(3)

(2)

(1)

(5)
(2.971 AC.)
23

(6)
(1.885 AC.)

(8)
(1.092 AC.)

(8)
(1.249 AC.)

(T.R.A.)

17

(11)

20

(13)

(14)

(15)

(16)

(15)

(14)

(11)

(9)

(8)

(7)

(6)

(5)

(4)

(3)

(2)

(1)

CAROLYN
TERR

23

(21)

24

(1)

(20)

(2A)

25

(1)

(20)

47

(1)

(2)

(19)

(18)

(3)

(20)

46

(1)

(20)

45

(1)

(19)

(18)

(3)

(20)

48

(1)

(2)

(19)

(18)

(3)

WOOD VALLEY DR

46

(1)

(20)

45

(1)

(2)

(19)

(18)

(3)

(20)

47

(1)

(2)

(19)

(18)

(3)

(20)

48

46

(1)

(2)

(19)

(18)

(3)

(20)

45

(1)

(2)

(19)

(18)

(3)

(20)

44

(1)

(2)

(19)

(18)

43

(1)

(2)

(17)

(16)

(8)

(15)

(14)

(7)

(16)

(15)

(8)

(17)

(16)

(9)

(18)

(3)

(20)

43

42

(1)

(2)

(17)

(16)

(8)

(15)

(14)

(7)

(16)

(15)

(8)

(17)

(16)

(9)

(18)

(3)

(20)

42

41

(1)

(2)

(17)

(16)

(8)

(15)

(14)

(7)

(16)

(15)

(8)

(17)

(16)

(9)

(18)

(3)

(20)

41

40

(1)

(2)

(17)

(16)

(8)

(15)

(14)

(7)

(16)

(15)

(8)

(17)

(16)

(9)

(18)

(3)

(20)

40

39

(1)

(2)

(17)

(16)

(8)

(15)

(14)

(7)

(16)

(15)

(8)

(17)

(16)

(9)

(18)

(3)

(20)

39

38

(1)

(2)

(17)

(16)

(8)

(15)

(14)

(7)

(16)

(15)

(8)

(17)

(16)

(9)

(18)

(3)

(20)

38

37

(1)

(2)

(17)

(16)

(8)

(15)

(14)

(7)

(16)

(15)

(8)

(17)

(16)

(9)

(18)

(3)

(20)

37

36

(1)

(2)

(17)

(16)

(8)

(15)

(14)

(7)

(16)

(15)

(8)

(17)

(16)

(9)

(18)

(3)

(20)

36

35

(1)

(2)

(17)

(16)

(8)

(15)

(14)

(7)

(16)

(15)

(8)

(17)

(16)

(9)

(18)

(3)

(20)

35

34

(1)

(2)

(17)

(16)

(8)

(15)

(14)

(7)

(16)

(15)

(8)

(17)

(16)

(9)

(18)

(3)

(20)

34

33

(1)

(2)

(17)

(16)

(8)

(15)

(14)

(7)

(16)

(15)

(8)

(17)

(16)

(9)

(18)

(3)

(20)

33

32

(1)

(2)

(17)

(16)

(8)