

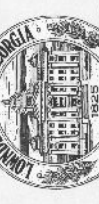
2015

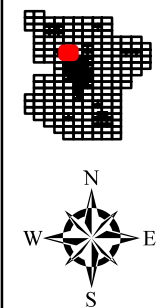
LOWNDES COUNTY  
GEORGIA

1 inch = 800 feet



70





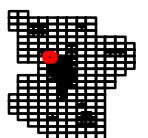
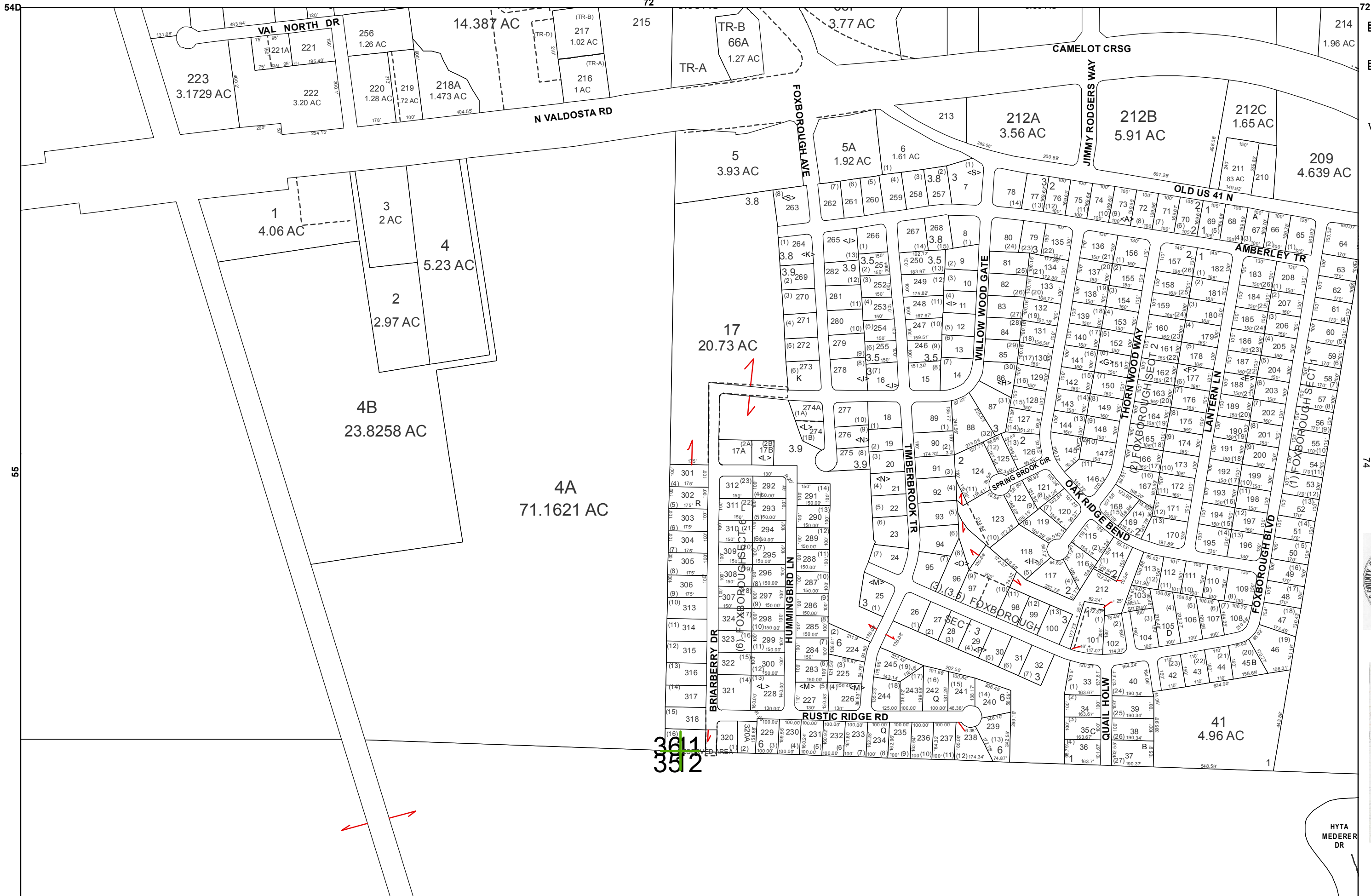
2015

LOWNDES COUNTY  
GEORGIA

1 inch = 800 feet



72



2015

LOWNDES COUNTY  
GEORGIA

1 inch = 400 feet



54D

72

72

55

74

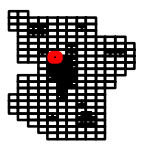
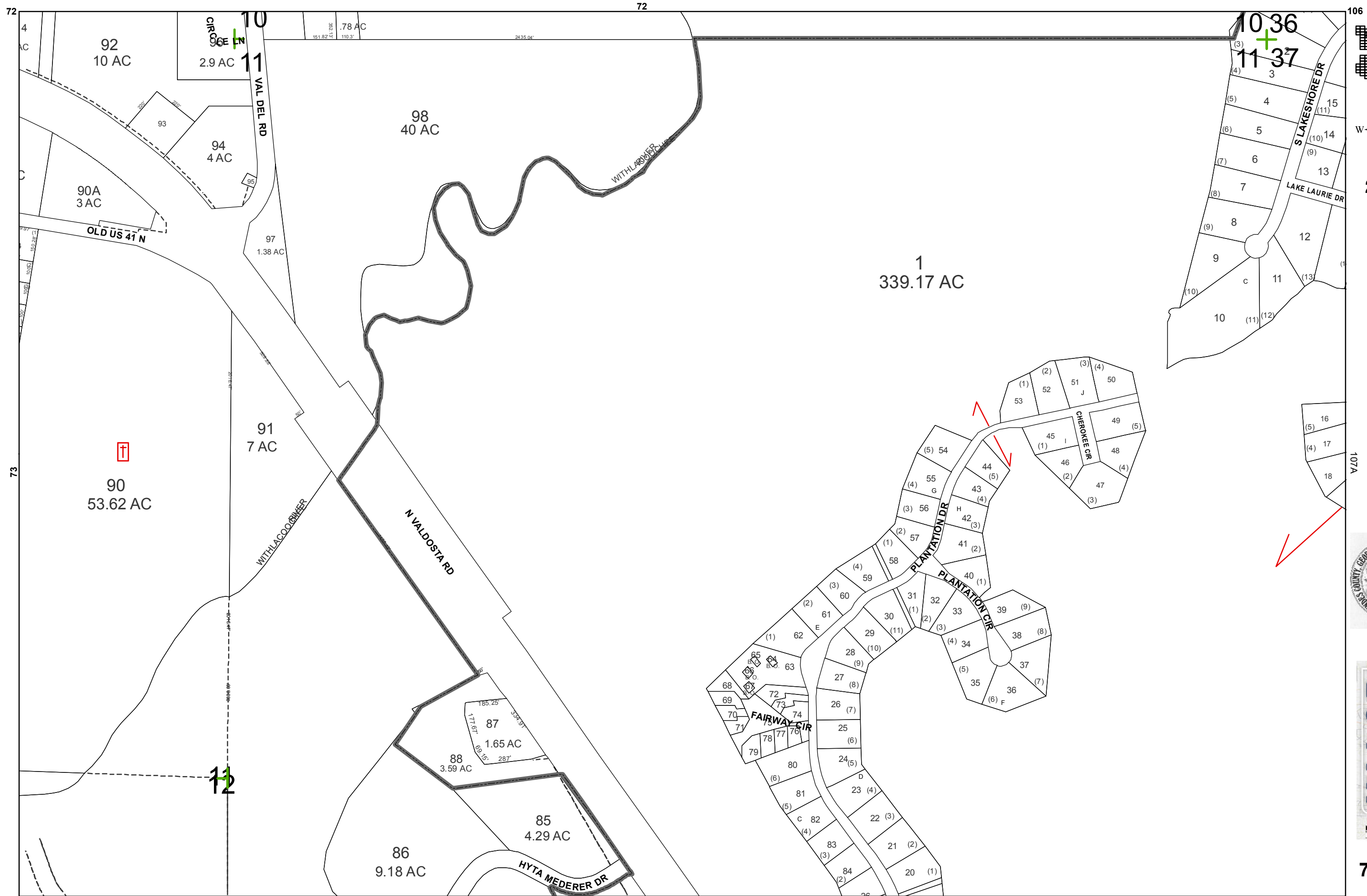
55

Imagery: USDA NAIP 2015.

75

76A

73



2015

LOWNDES COUNTY  
GEORGIA

1 inch = 400 feet



74

55

73

74



2015

LOWNDES COUNTY  
GEORGIA

76C

1 inch = 400 feet



75

55

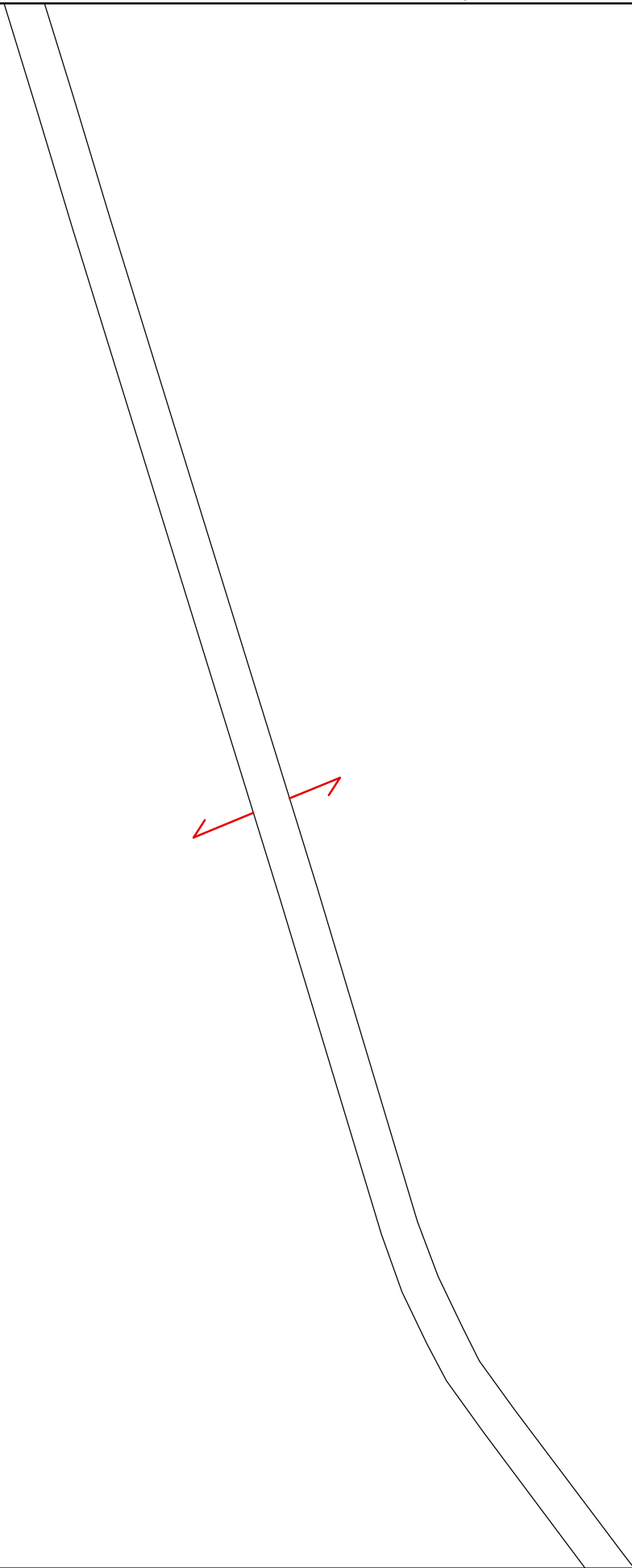
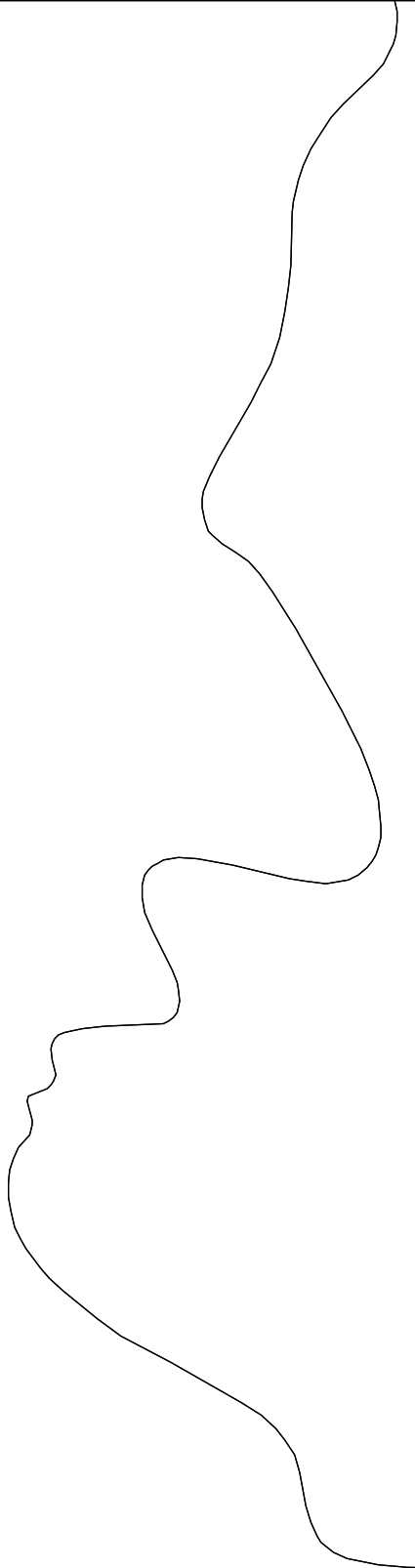
56

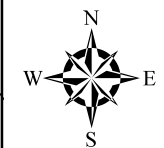
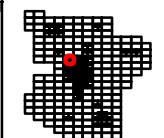
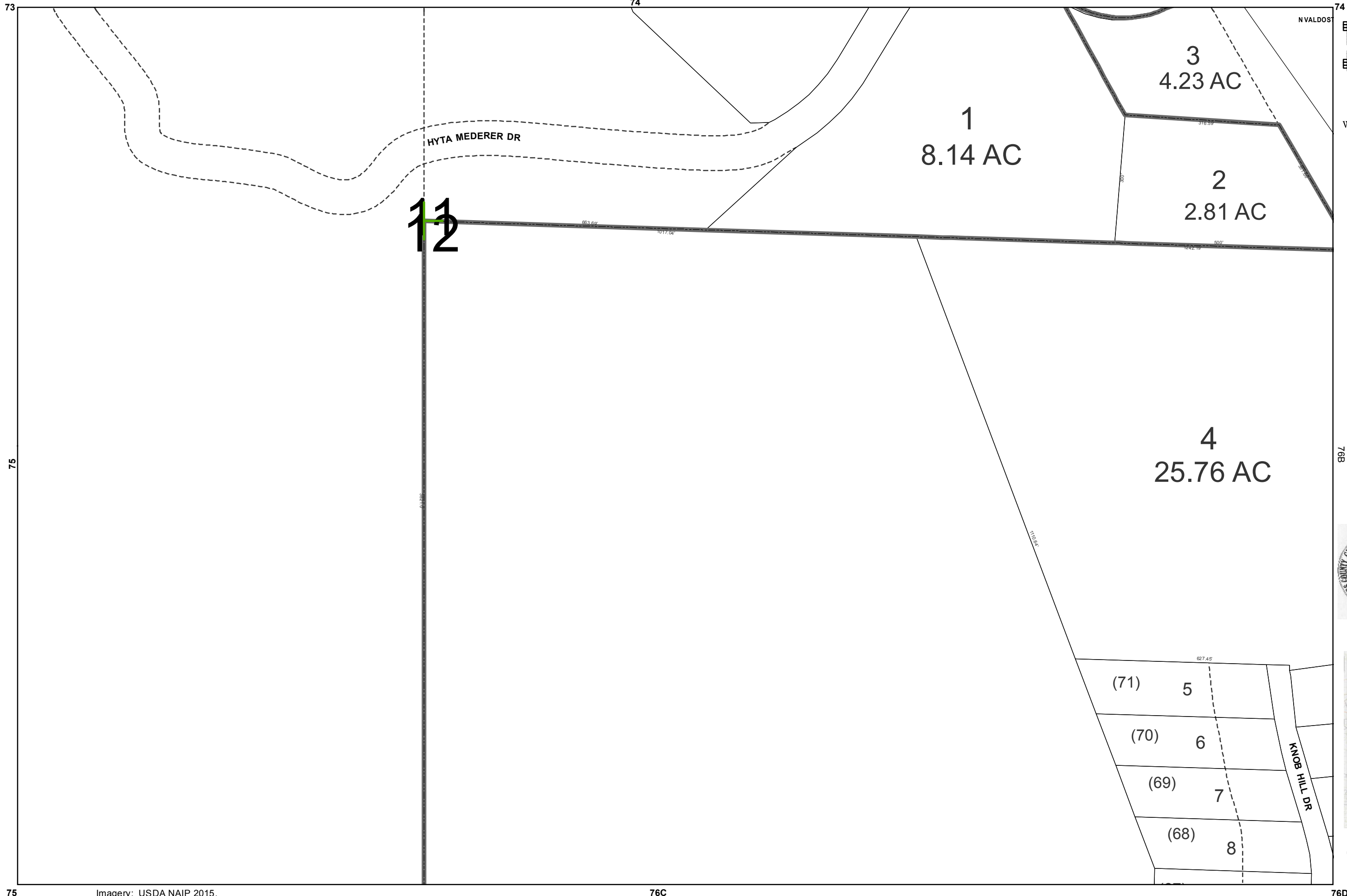
Imagery: USDA NAIP 2015.

77

78A

60-LE-144-1-B2  
N





2015

LOWNDES COUNTY  
GEORGIA

76B  
1 inch = 200 feet

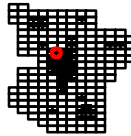


76A

74

74

107C



2015

LOWNDES COUNTY  
GEORGIA



109A  
1 inch = 200 feet



76B

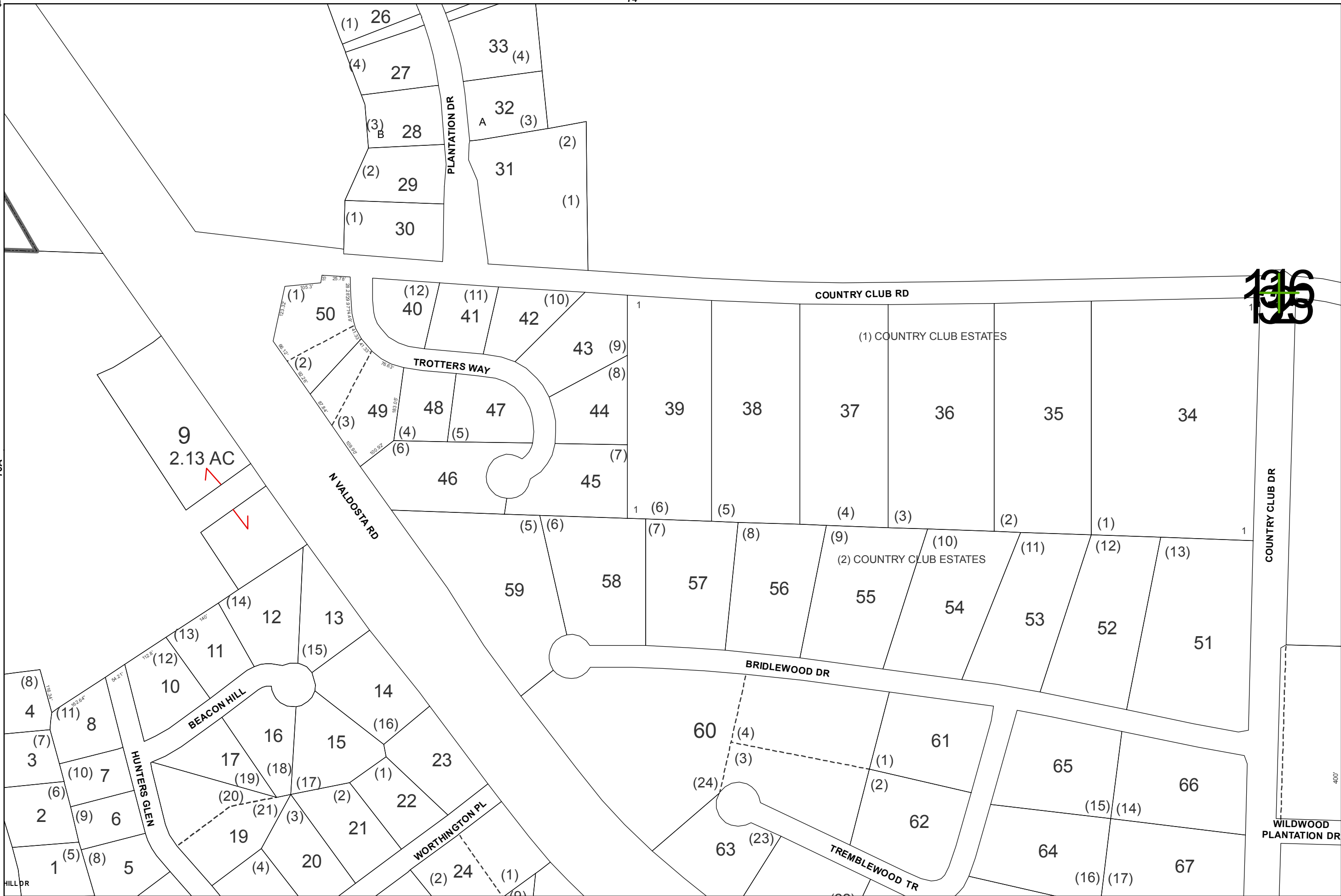
76A

76C

Imagery: USDA NAIP 2015.

76D

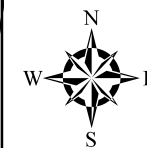
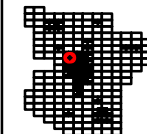
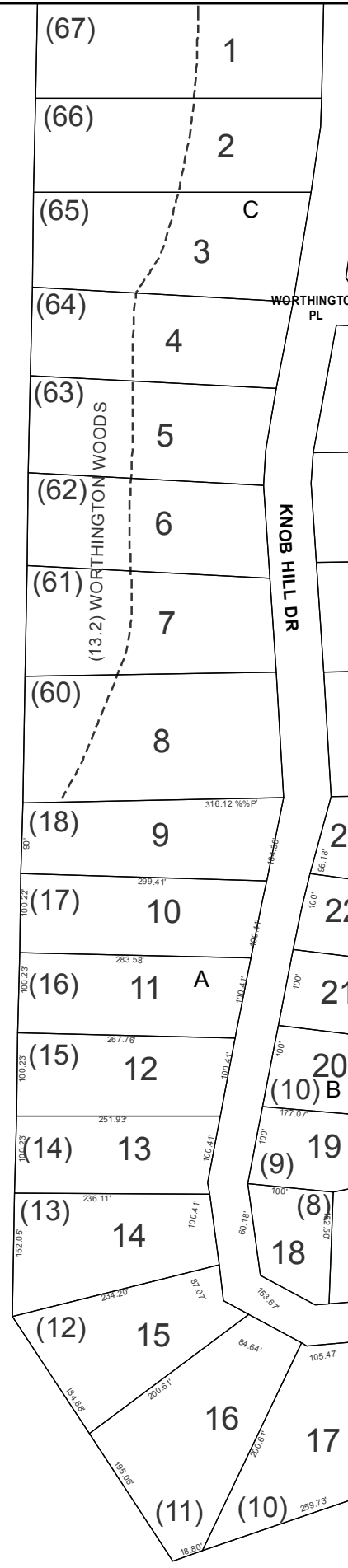
109C





25  
177.80 AC.

24  
152.05 AC



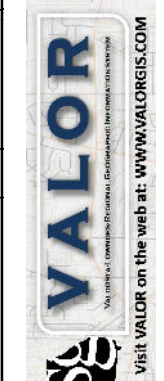
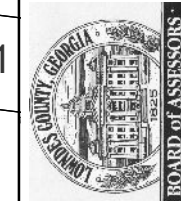
2015

LOWNDES COUNTY  
GEORGIA

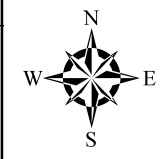
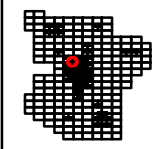
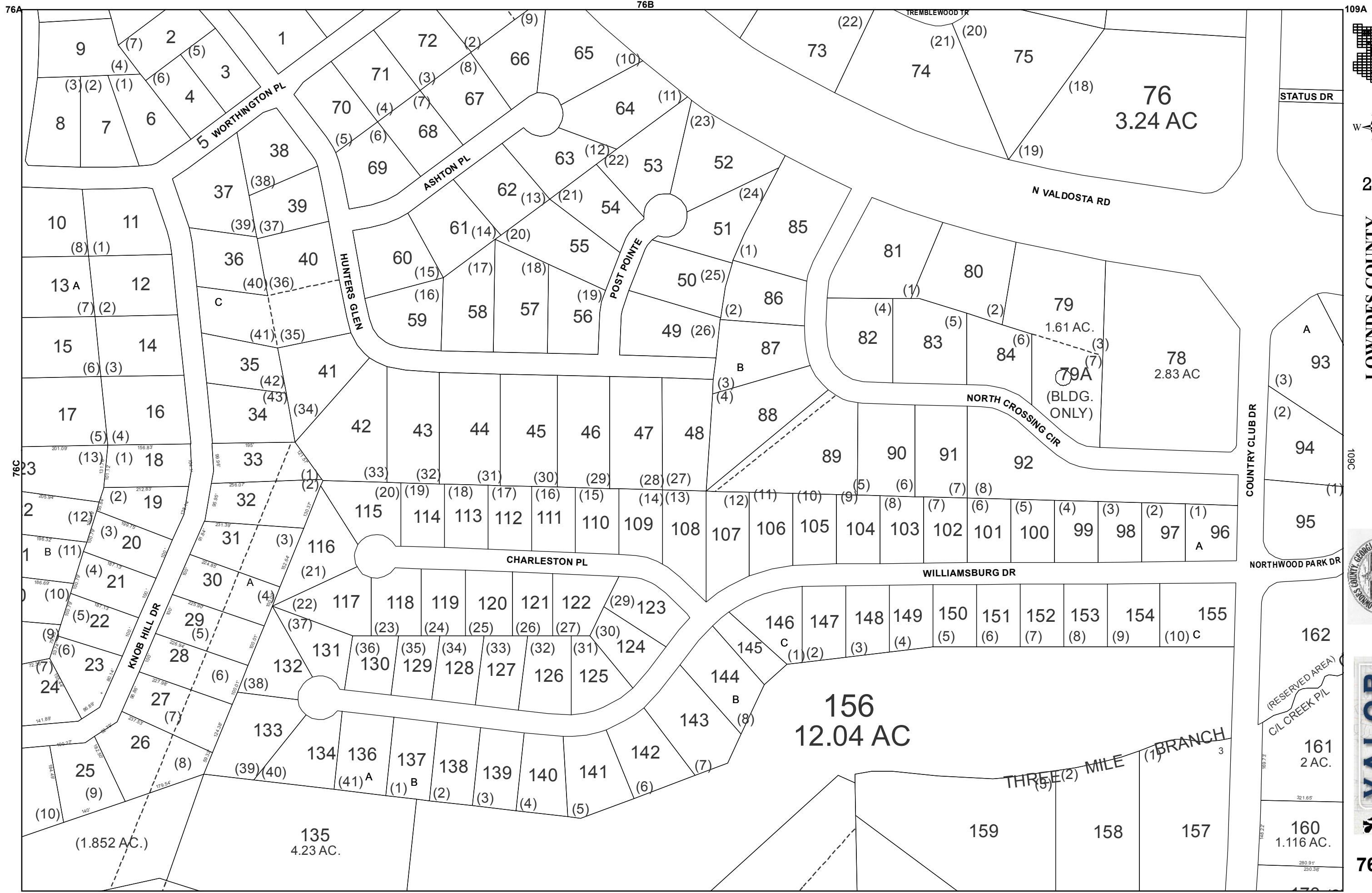
1 inch = 200 feet

76D

76E



76C



2015

LOWNDES COUNTY  
GEORGIA

1 inch = 200 feet



76D