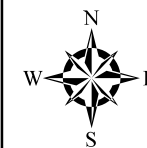
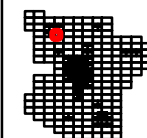


28

48

49



2015

LOWNDES COUNTY  
GEORGIA

1 inch = 400 feet



50

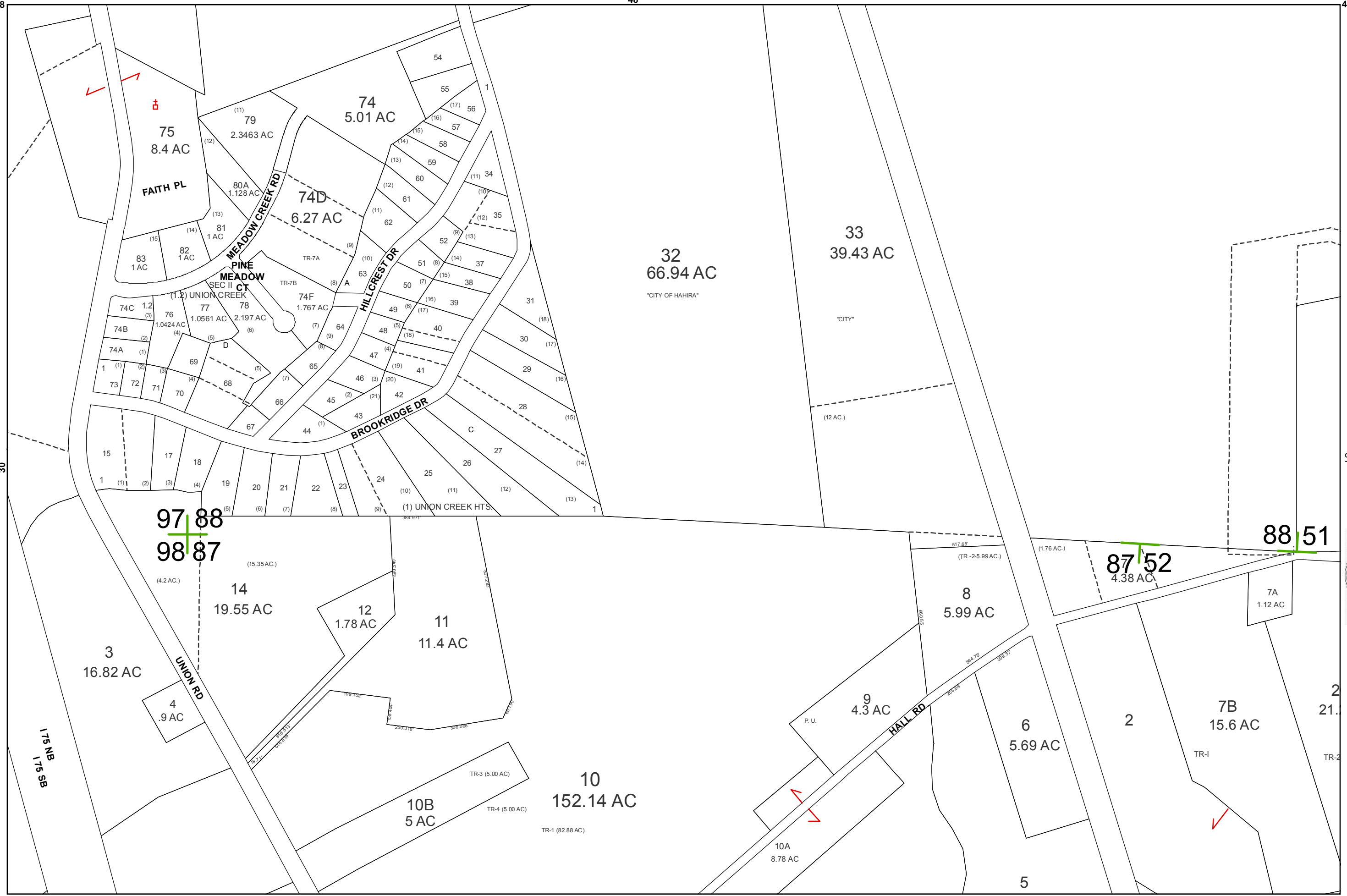
30

31

Imagery: USDA NAIP 2015.

52

52



75  
8.4 AC

74  
5.01 AC

32  
66.94 AC

33  
39.43 AC

97/88  
98/87

14  
19.55 AC

12  
1.78 AC

11  
11.4 AC

3  
16.82 AC

4  
.9 AC

8  
5.99 AC

87/52  
4.38 AC

88/51

7A  
1.12 AC

9  
4.3 AC

6  
5.69 AC

7B  
15.6 AC

10  
152.14 AC

10B  
5 AC

10A  
8.78 AC

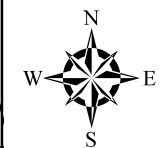
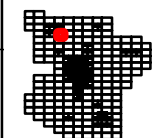
5

2  
21.1

50



Imagery: USDA NAIP 2015.



2015  
 LOWNDES COUNTY  
 GEORGIA

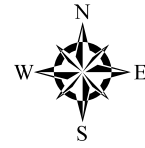
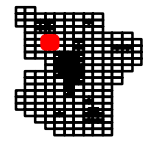
1 inch = 400 feet



51







2015

LOWNDES COUNTY  
GEORGIA

1 inch = 800 feet



BOARD OF ASSESSORS

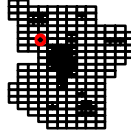


53

32

53

53



2015

LOWNDES COUNTY  
GEORGIA

845  
1 inch = 200 feet



54A

WEIGHT STATION SB

9  
225.74 A

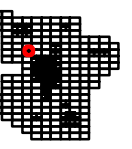
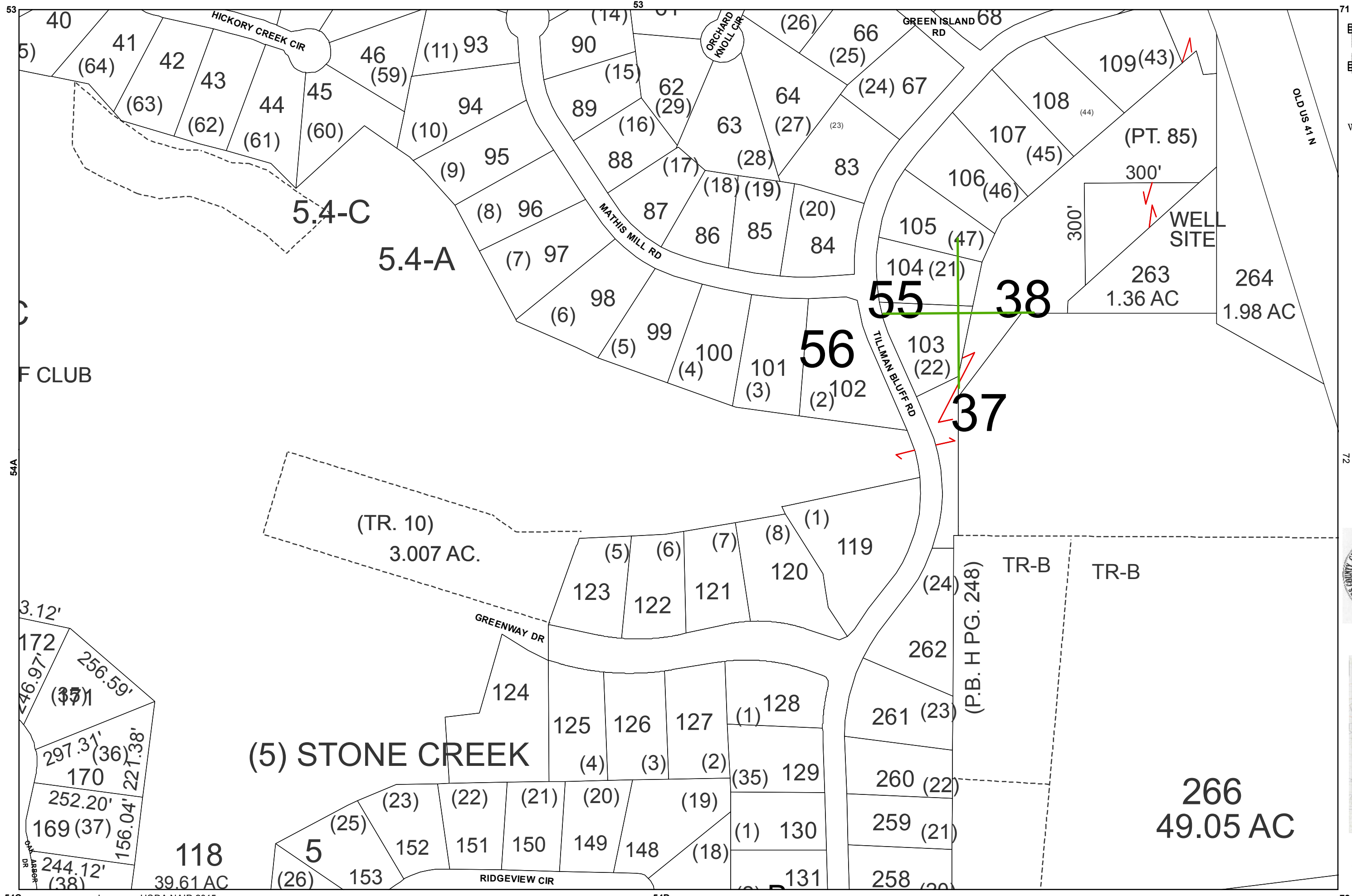
33

33

Imagery: USDA NAIP 2015.

54C

54D



2015

LOWNDES COUNTY  
GEORGIA

1 inch = 200 feet



54B

33

54A

54B



2015

LOWNDES COUNTY  
GEORGIA

1 inch = 200 feet



54C

DANKS

CREEK

TIMBERWOODS ESTATES P.B. H PG. 188

TIMBERWOOD DR

50A  
4 AC

(3)

31

(4)

30

B

(5)

29

(6)

28

27

(7)

(8)

26

(9)

25

(10)

24

(11)

37

(5)

36

(4)

A

38

22

33

)]

34

Imagery: USDA NAIP 2015.

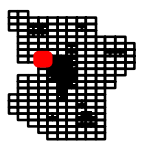
55

55









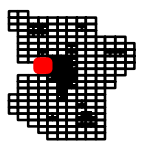
2015

LOWNDES COUNTY  
GEORGIA

1 inch = 800 feet



55



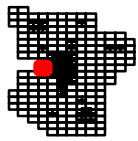
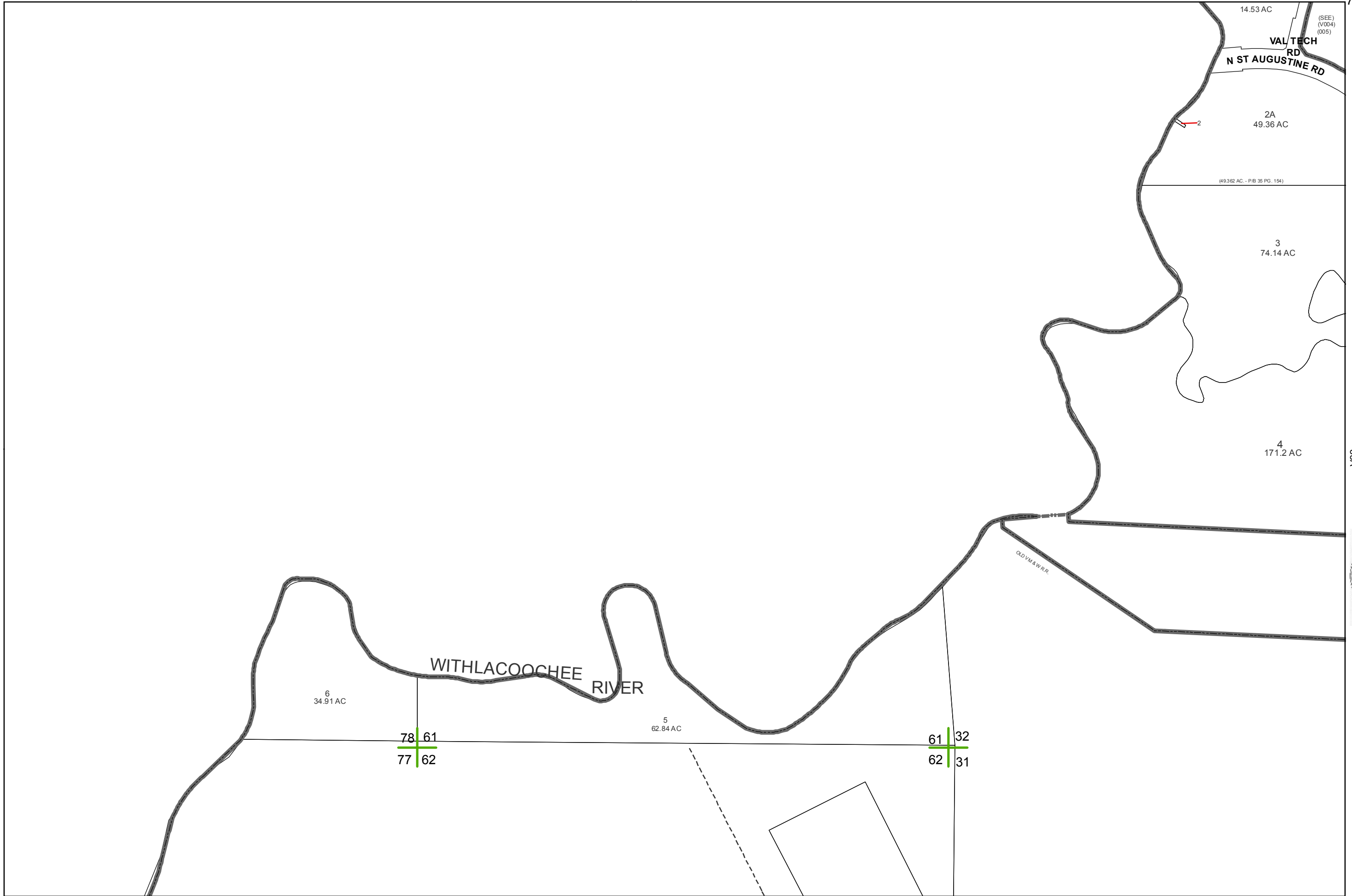
2015

LOWNDES COUNTY  
GEORGIA

1 inch = 800 feet



56



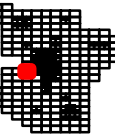
2015

LOWNDES COUNTY  
GEORGIA

1 inch = 800 feet







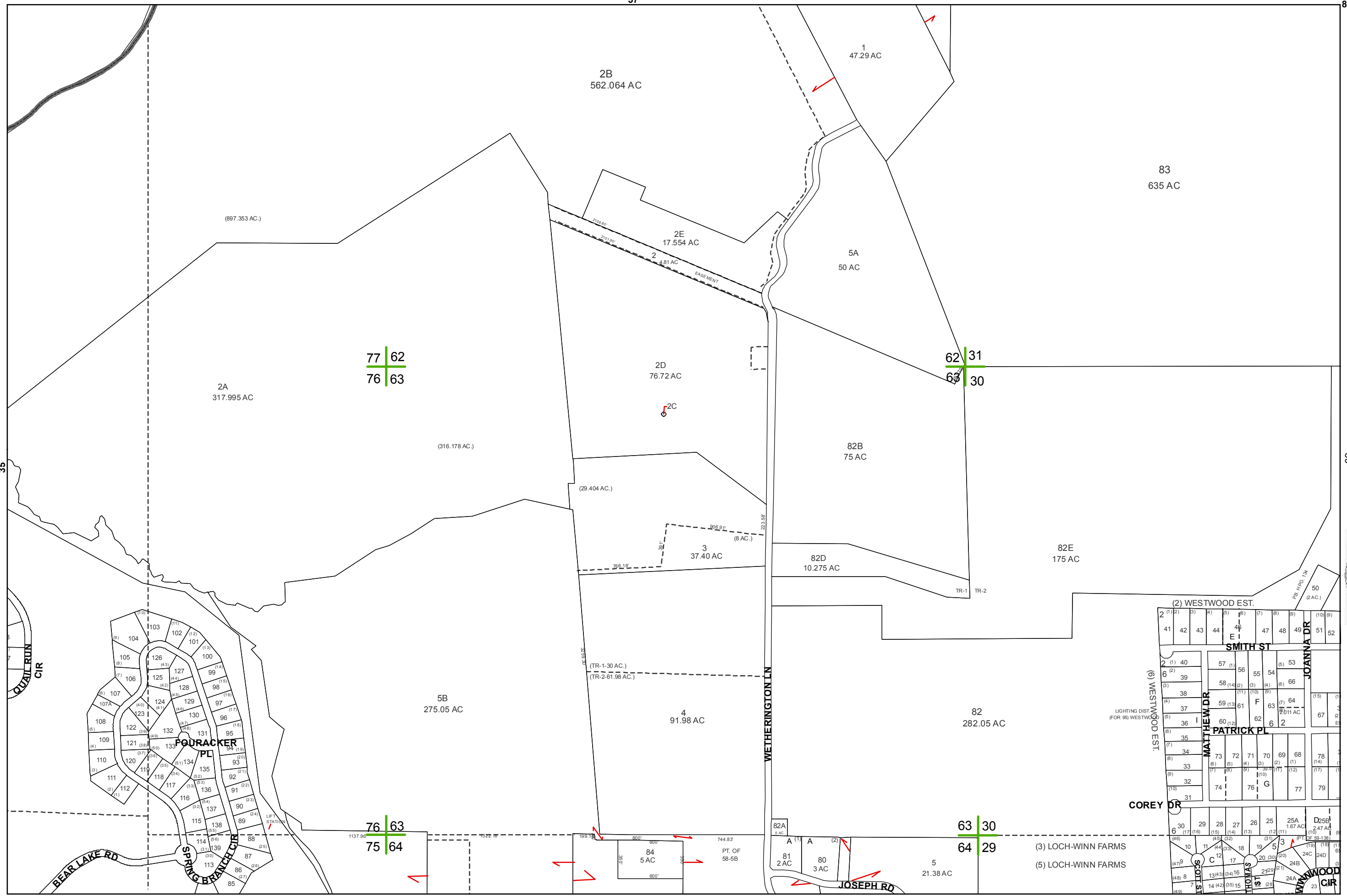
2015

LOWNDES COUNTY  
GEORGIA

1 inch = 800 feet



58

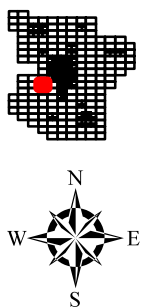
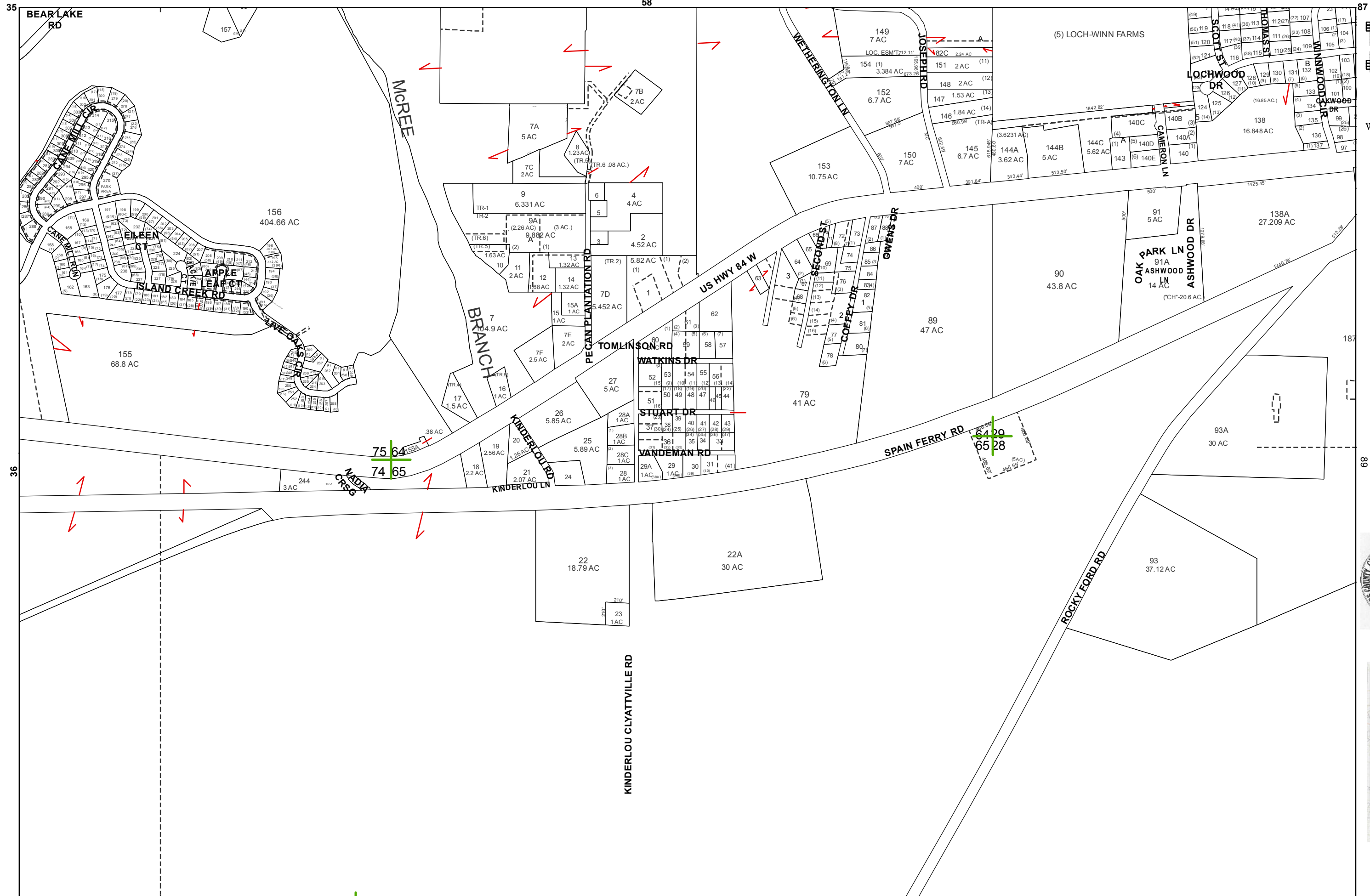


77 | 62  
76 | 63

62 | 31  
63 | 30

76 | 63  
75 | 64

63 | 30  
64 | 29



2015

LOWNDES COUNTY  
GEORGIA

1 inch = 800 feet



59