

2015

LOWNDES COUNTY  
GEORGIA

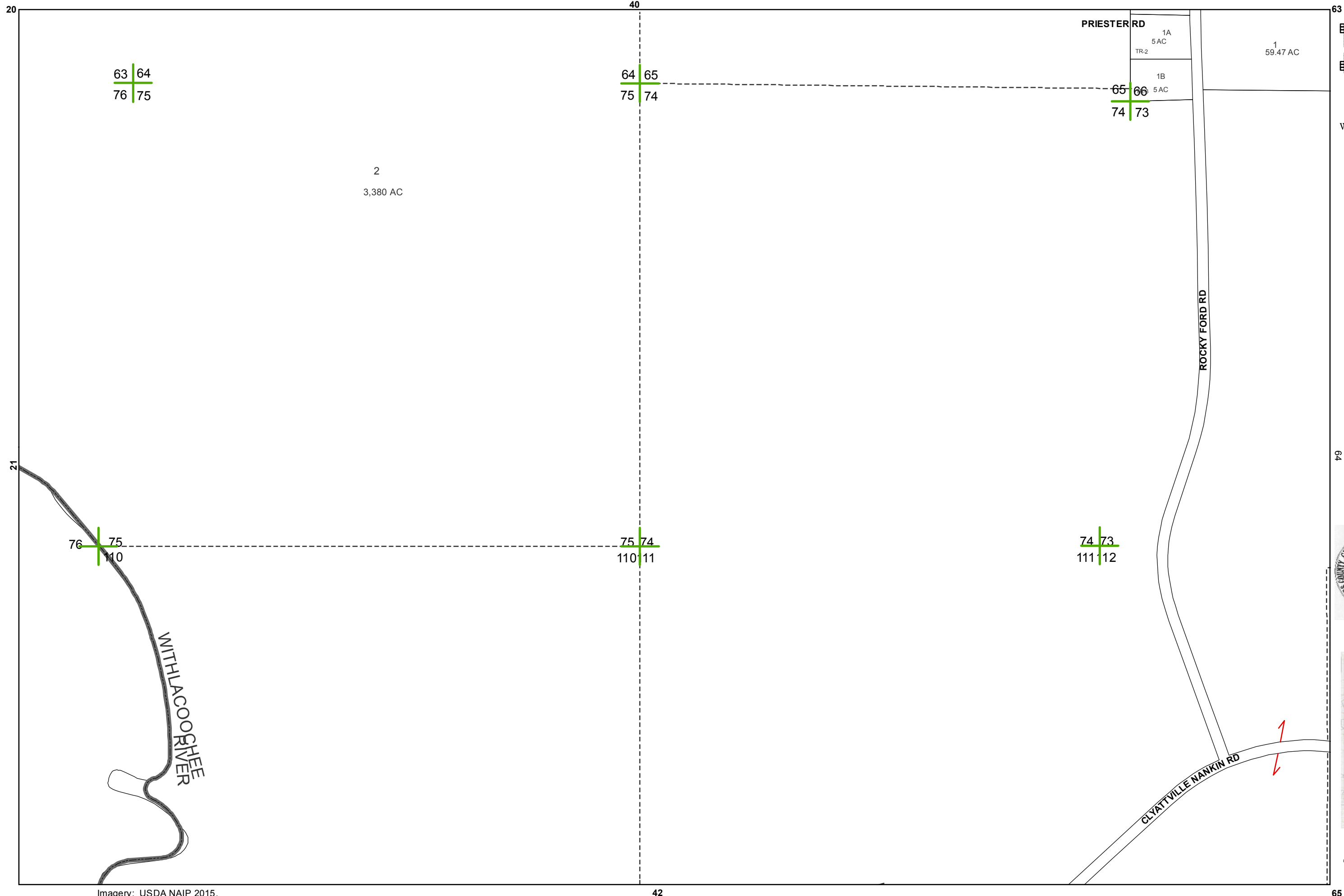
1 inch = 800 feet



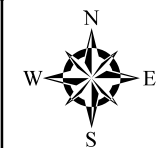
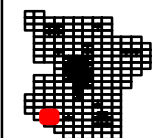
BOARD OF ASSESSORS



40

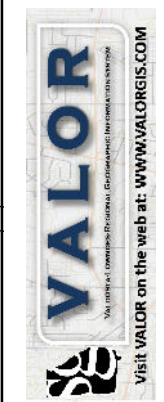


Imagery: USDA NAIP 2015.



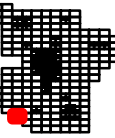
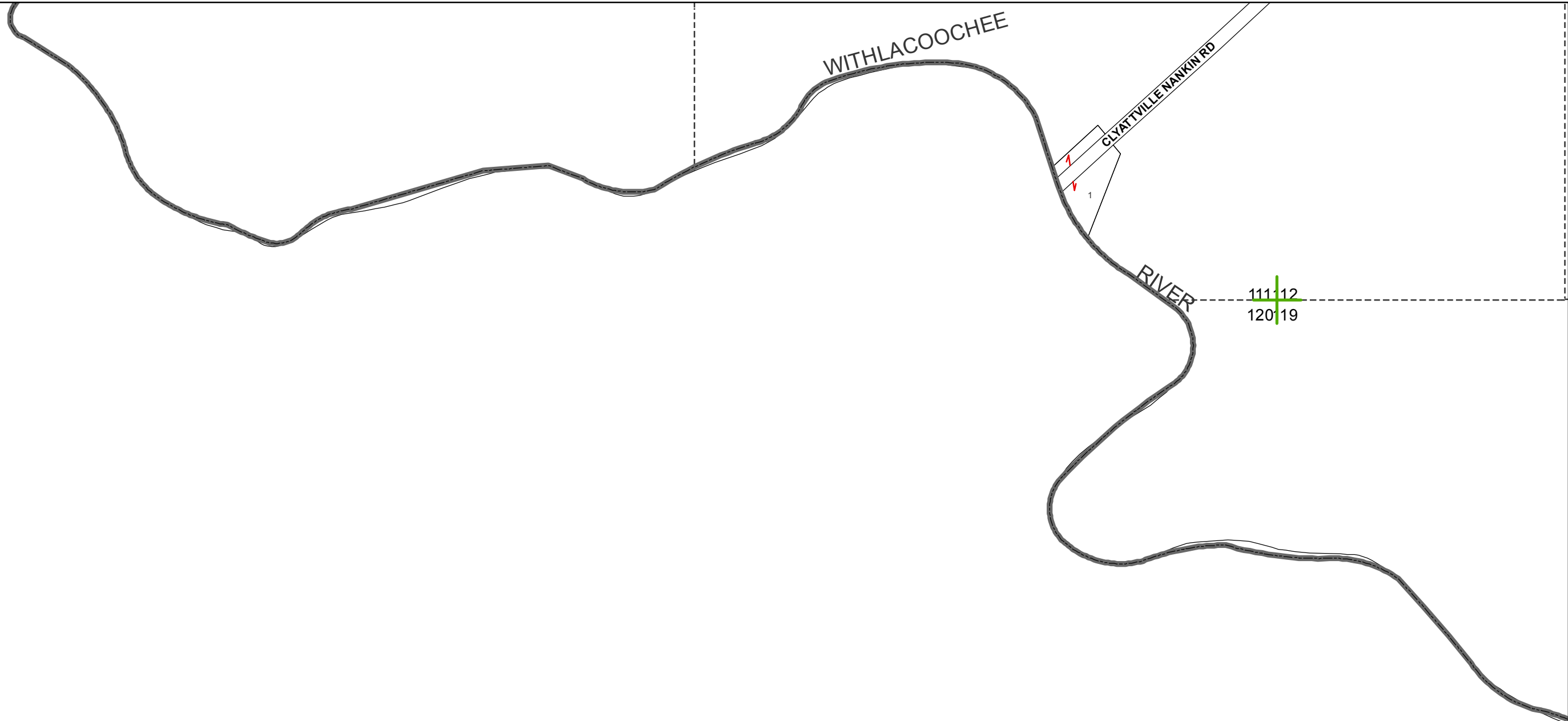
2015  
**LOWNDES COUNTY**  
**GEORGIA**

1 inch = 800 feet



41

65



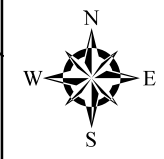
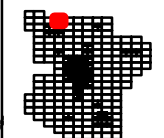
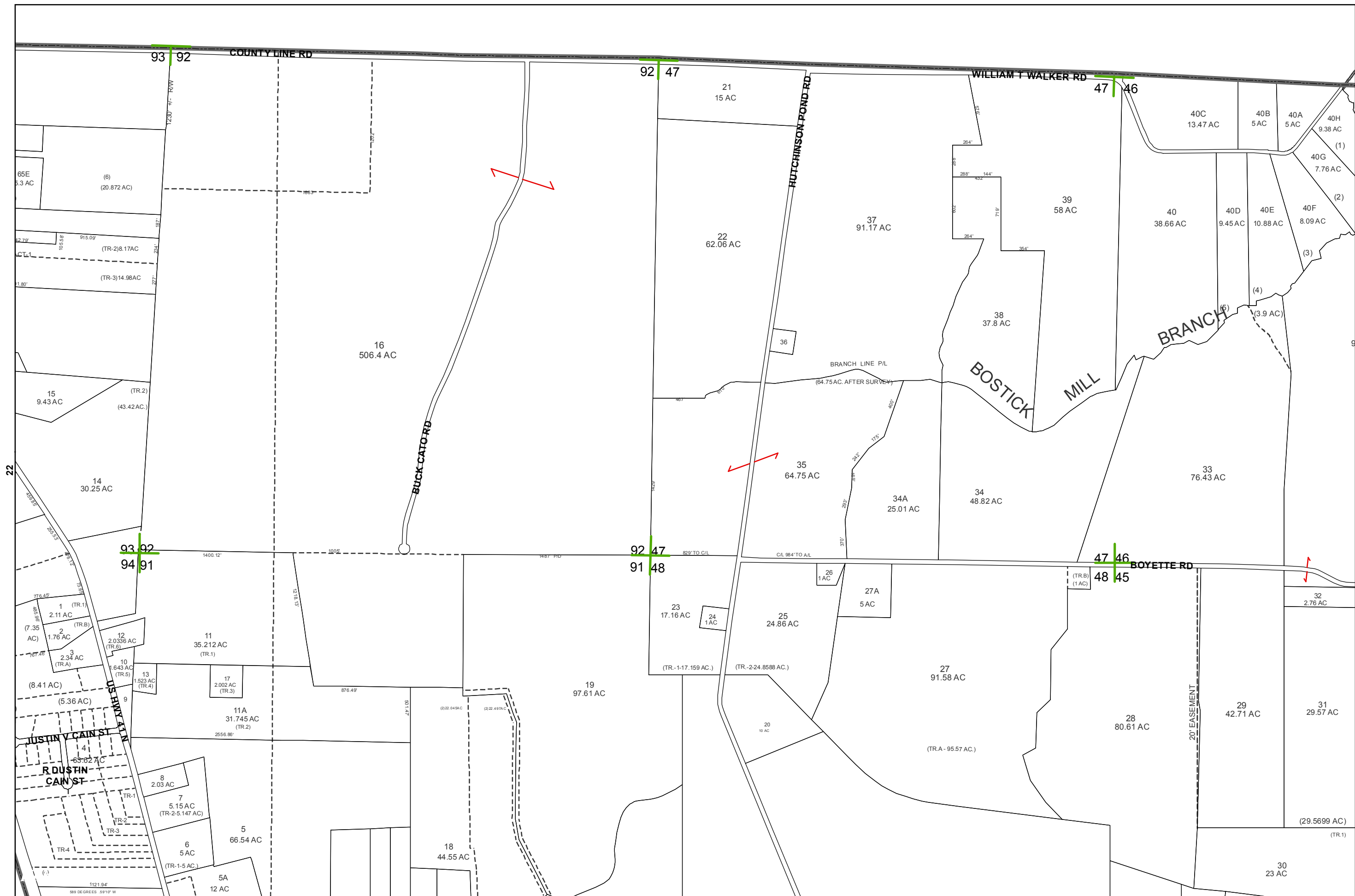
2015

LOWNDES COUNTY  
GEORGIA

59  
1 inch = 800 feet



42



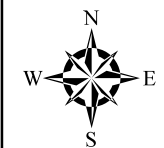
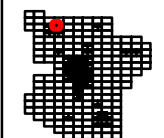
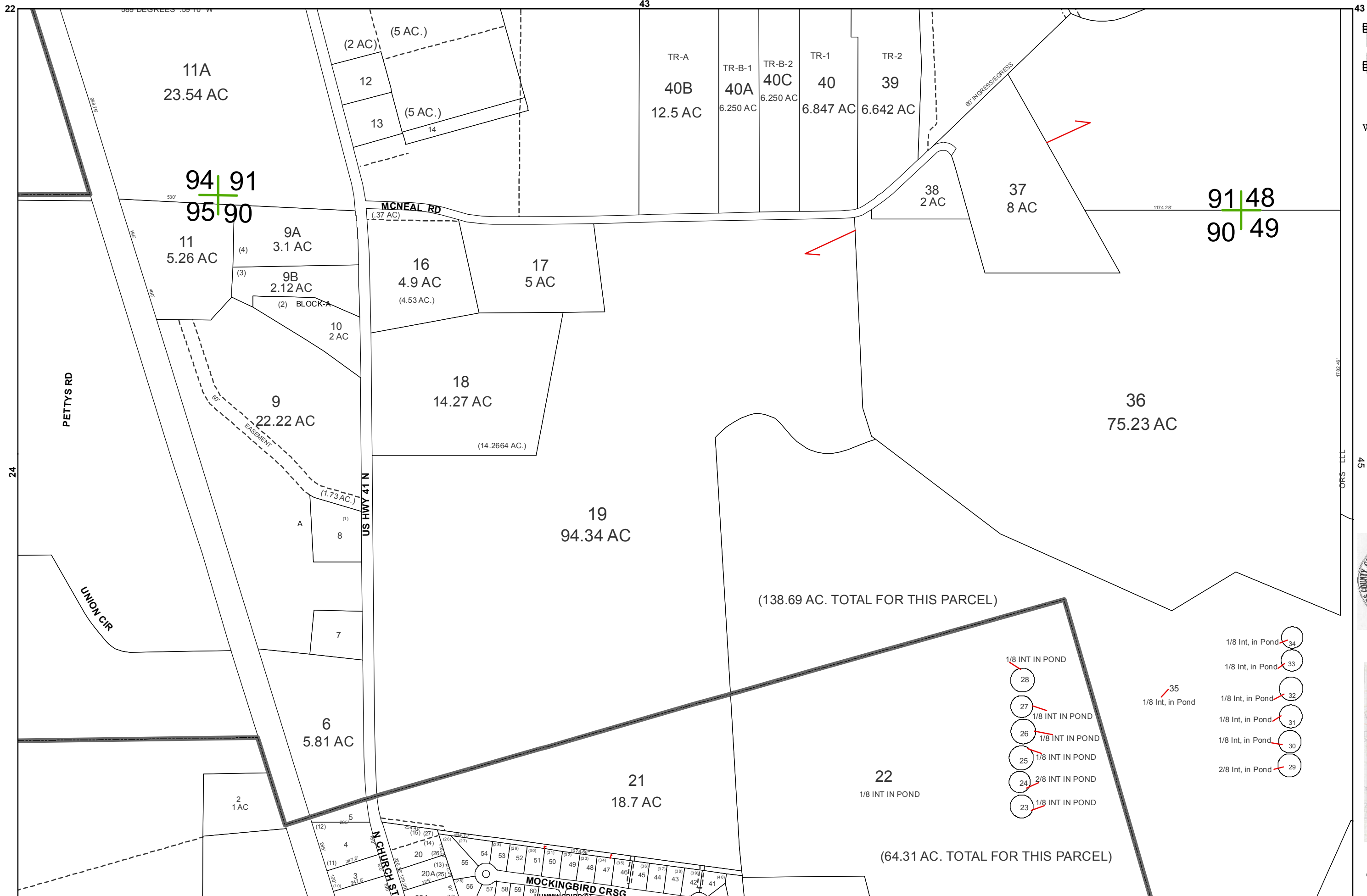
2015

LOWNDES COUNTY  
GEORGIA

1 inch = 800 feet



43



2015

LOWNDES COUNTY  
GEORGIA

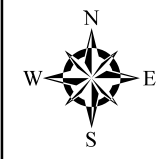
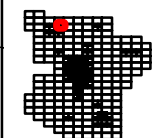
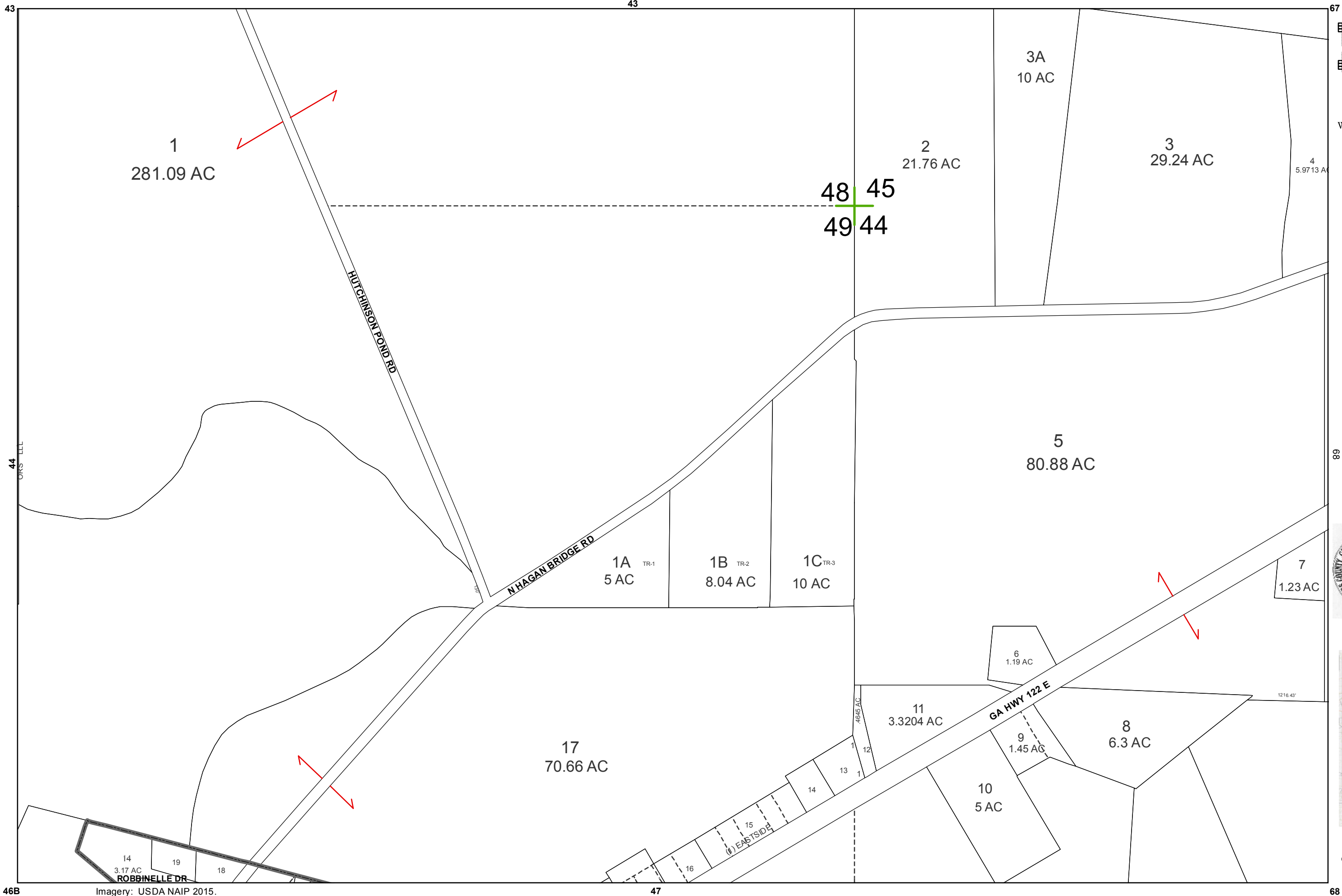
1 inch = 400 feet



BOARD OF ASSESSORS



44



2015

LOWNDES COUNTY  
GEORGIA

1 inch = 400 feet

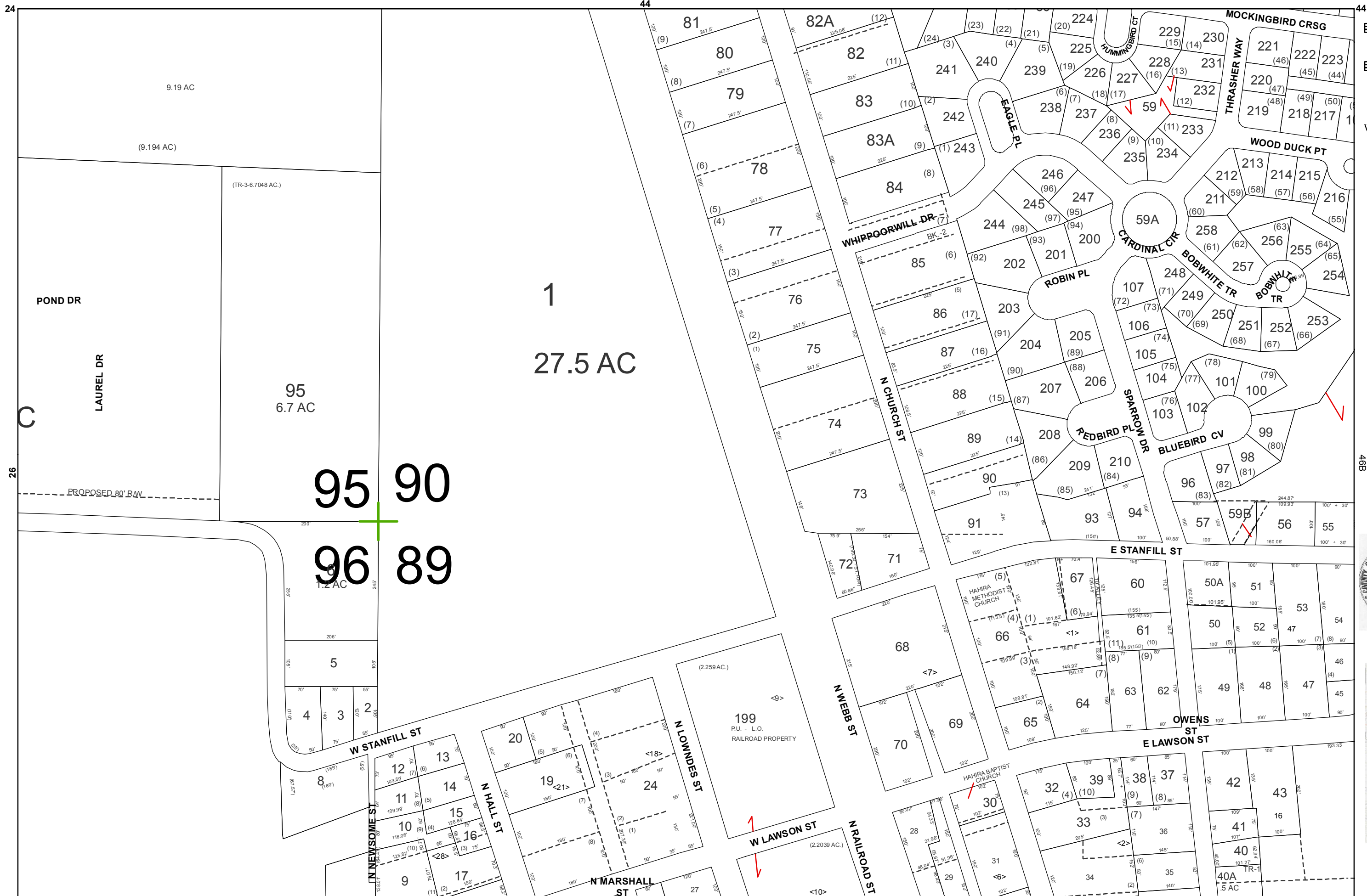


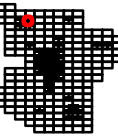
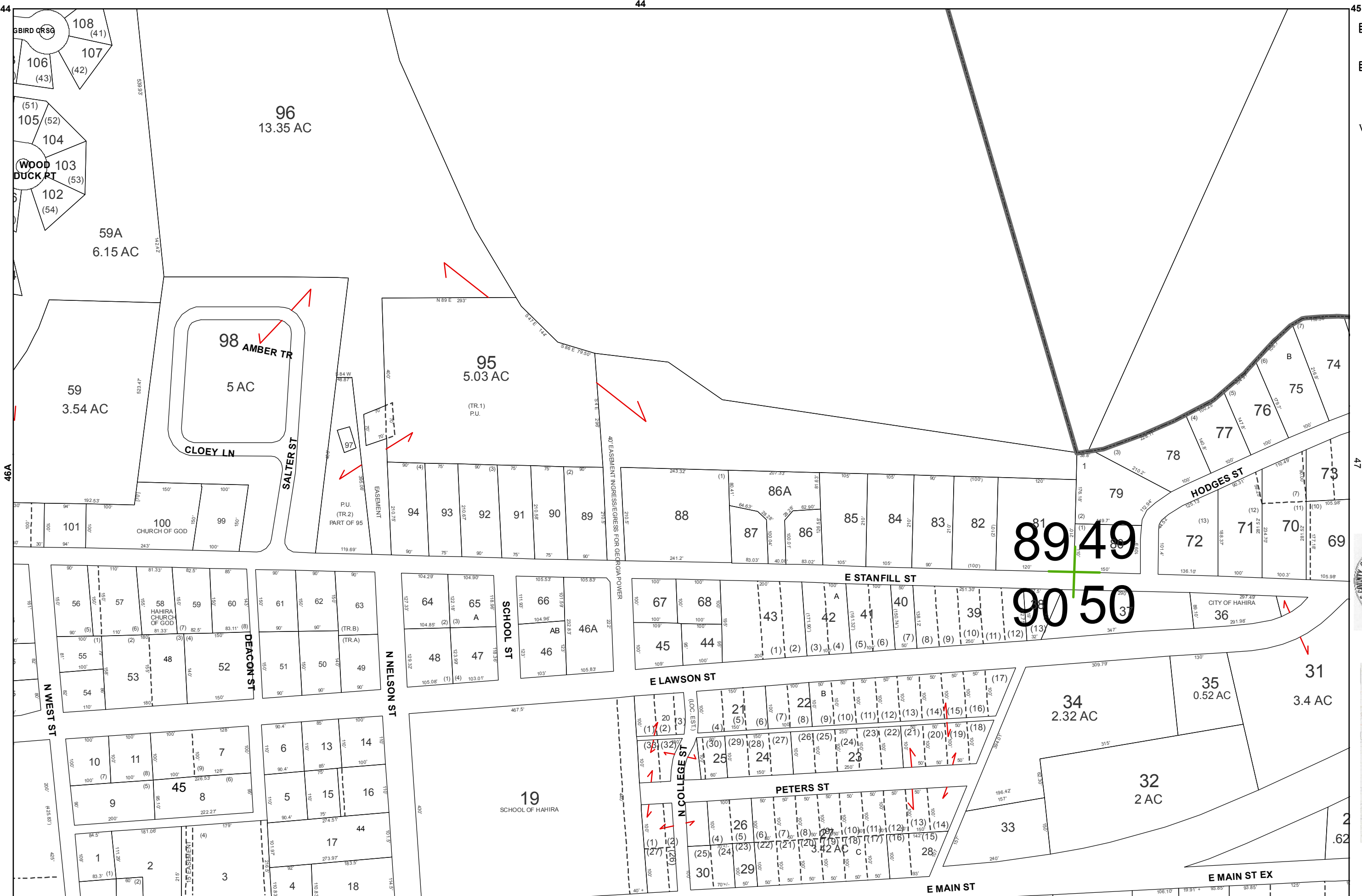
BOARD OF ASSESSORS



45







2015

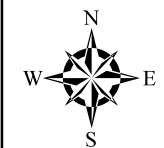
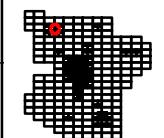
LOWNDES COUNTY  
GEORGIA

1 inch = 200 feet



46B





2015

LOWNDES COUNTY  
GEORGIA

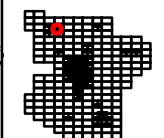
1 inch = 200 feet



BOARD OF ASSESSORS



46C



2015

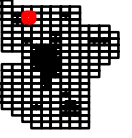
LOWNDES COUNTY  
GEORGIA

1 inch = 200 feet



46D





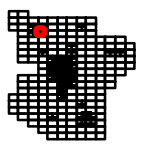
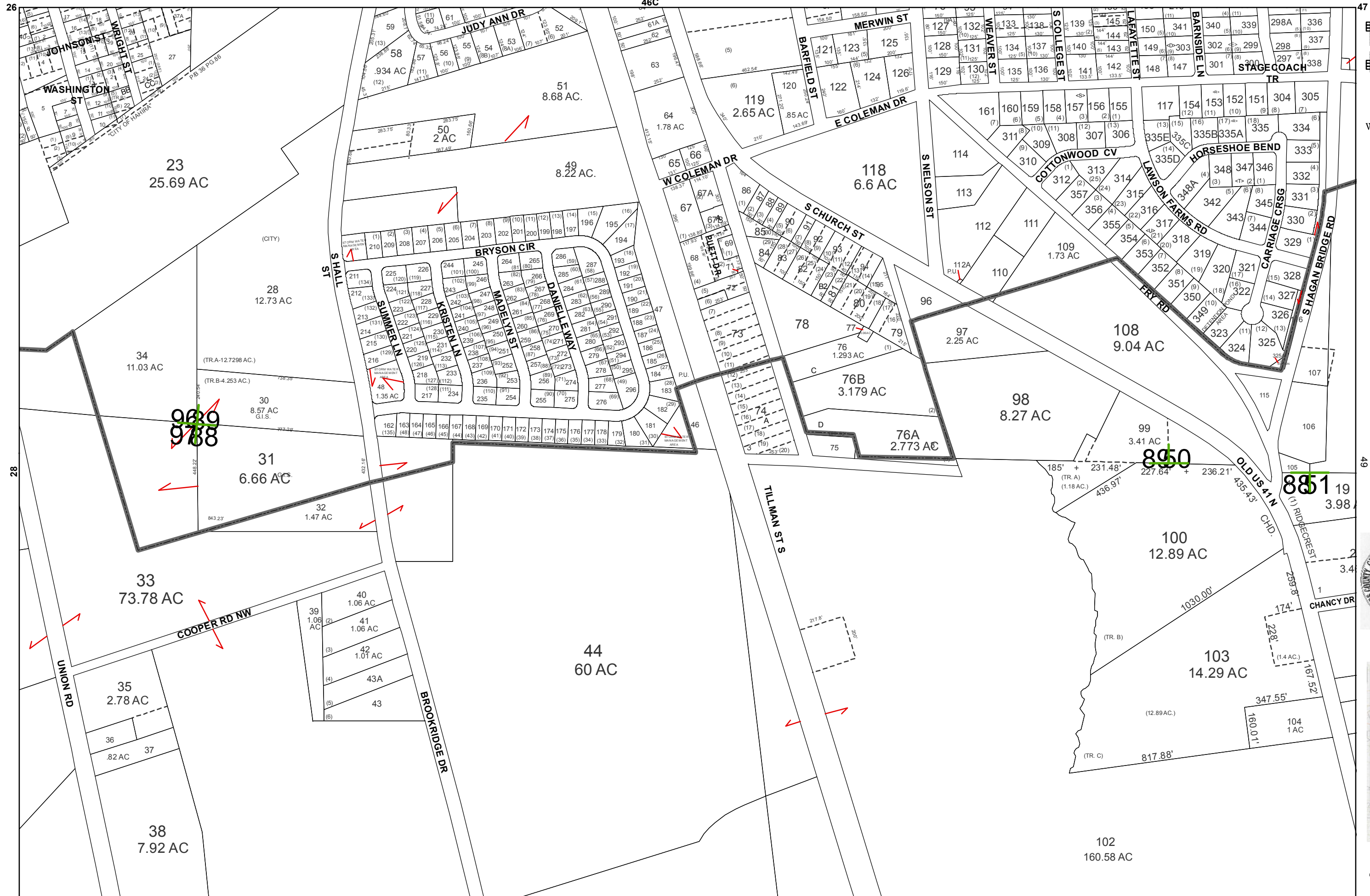
2015

LOWNDES COUNTY  
GEORGIA

1 inch = 400 feet



47



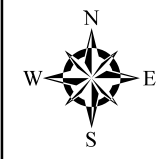
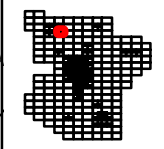
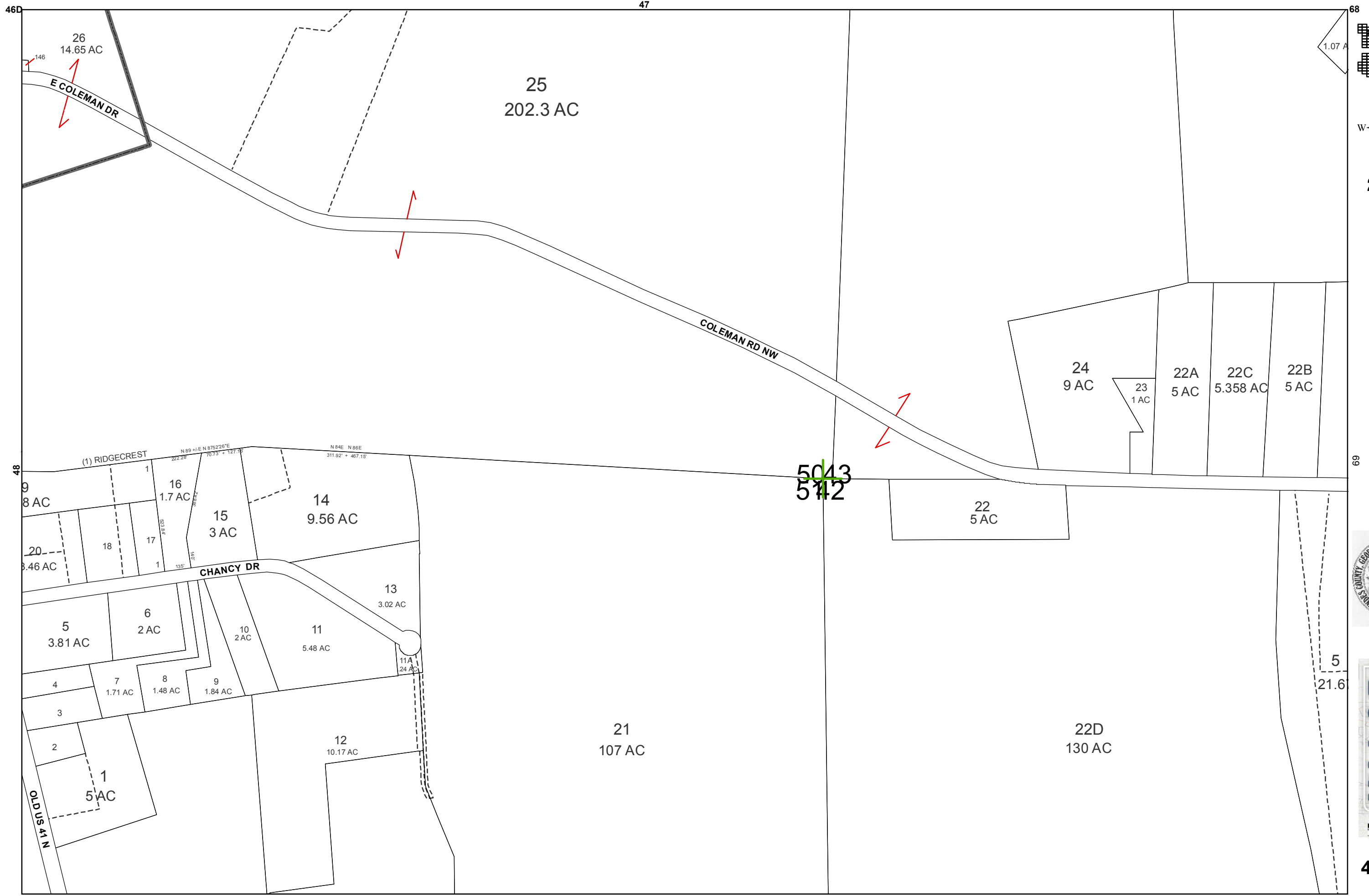
2015

LOWNDES COUNTY  
GEORGIA

1 inch = 400 feet



48



2015

LOWNDES COUNTY  
GEORGIA

1 inch = 400 feet



49