

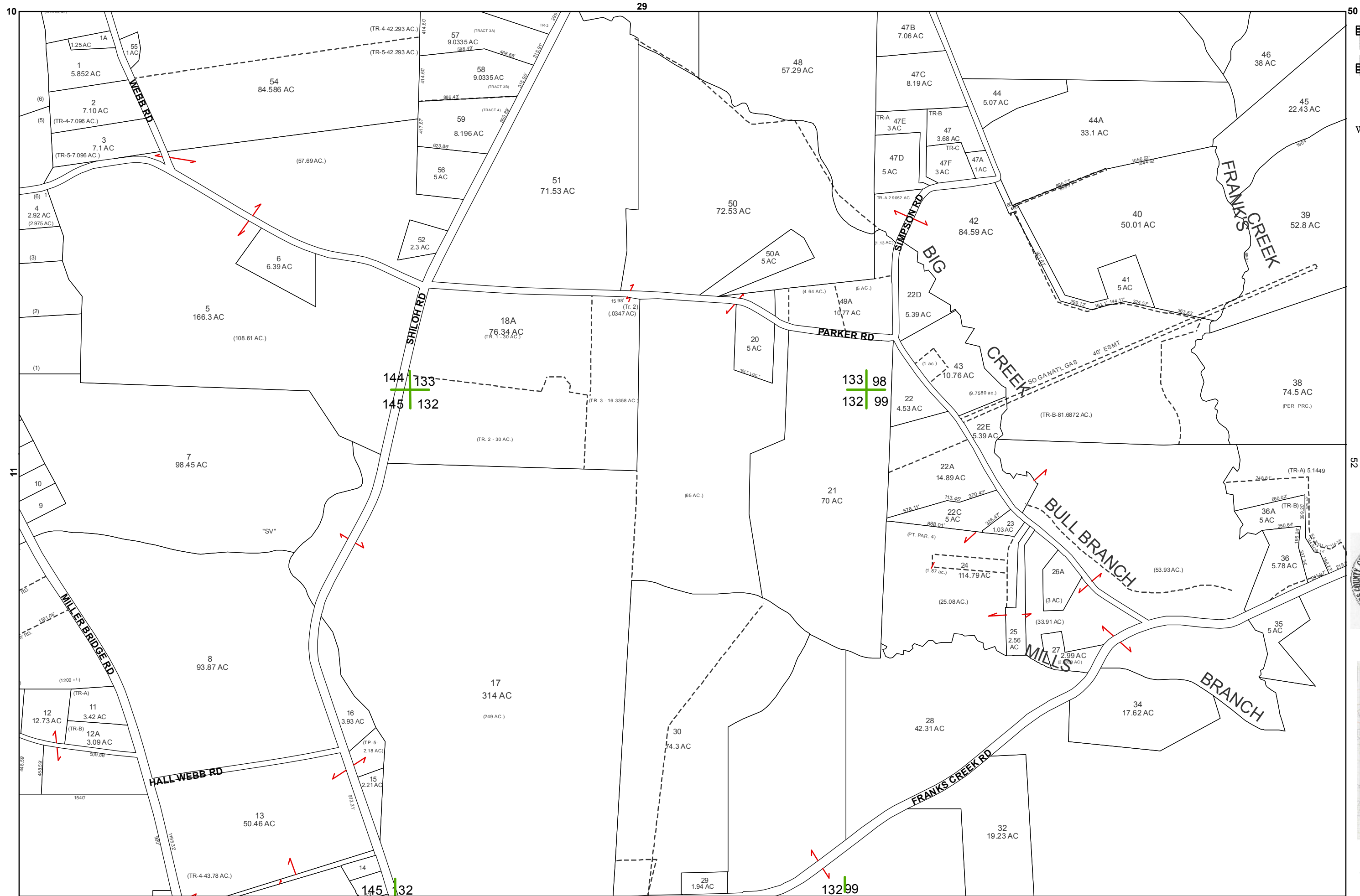
2015

LOWNDES COUNTY
GEORGIA

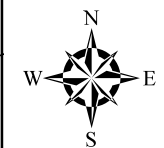
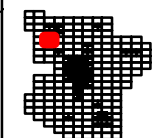
1 inch = 400 feet



30



Imagery: USDA NAIP 2015.



2015

LOWNDES COUNTY
GEORGIA

1 inch = 800 feet



BOARD OF ASSESSORS

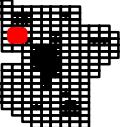
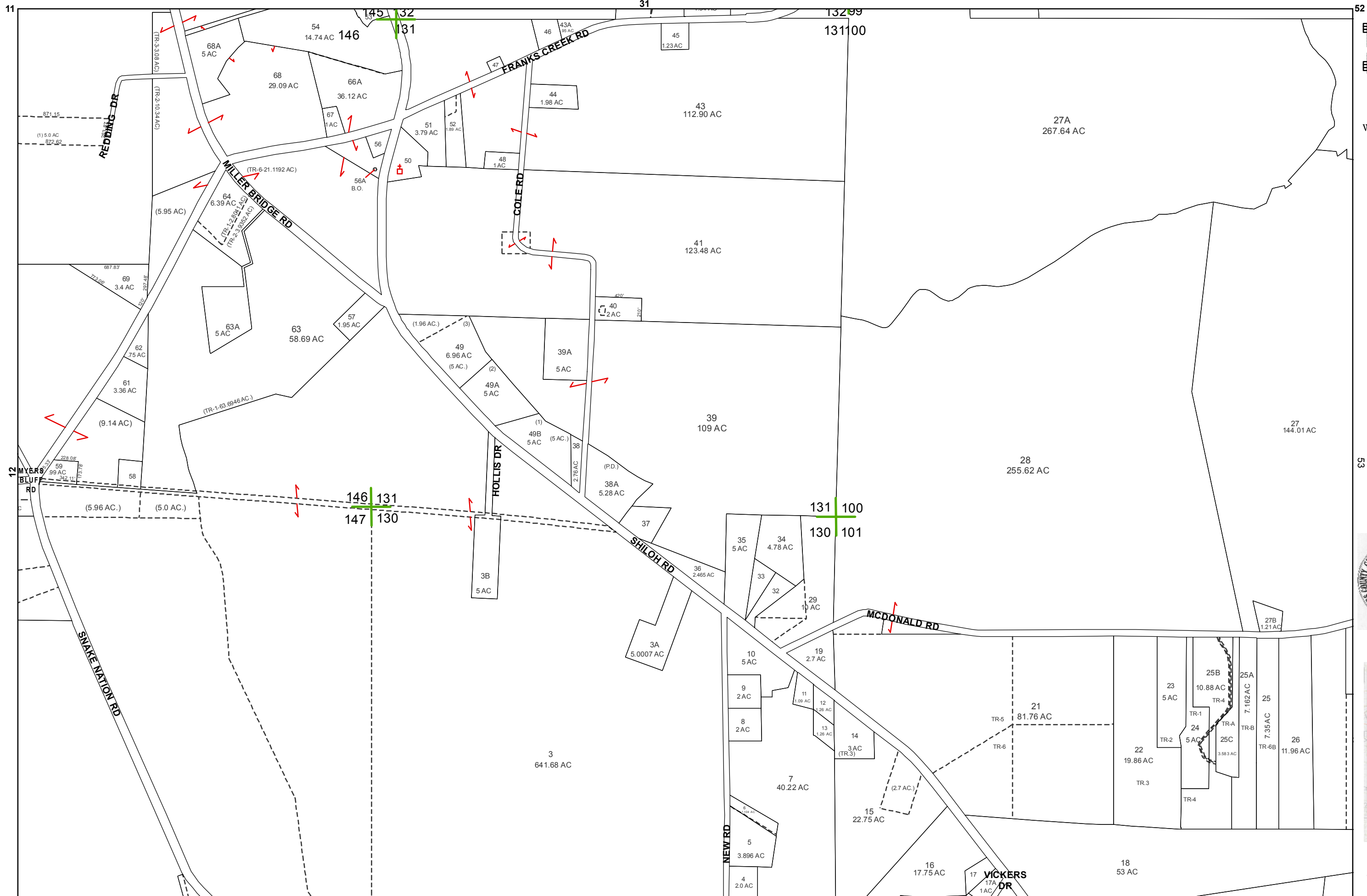


31

12

32

53



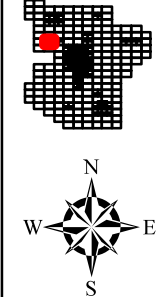
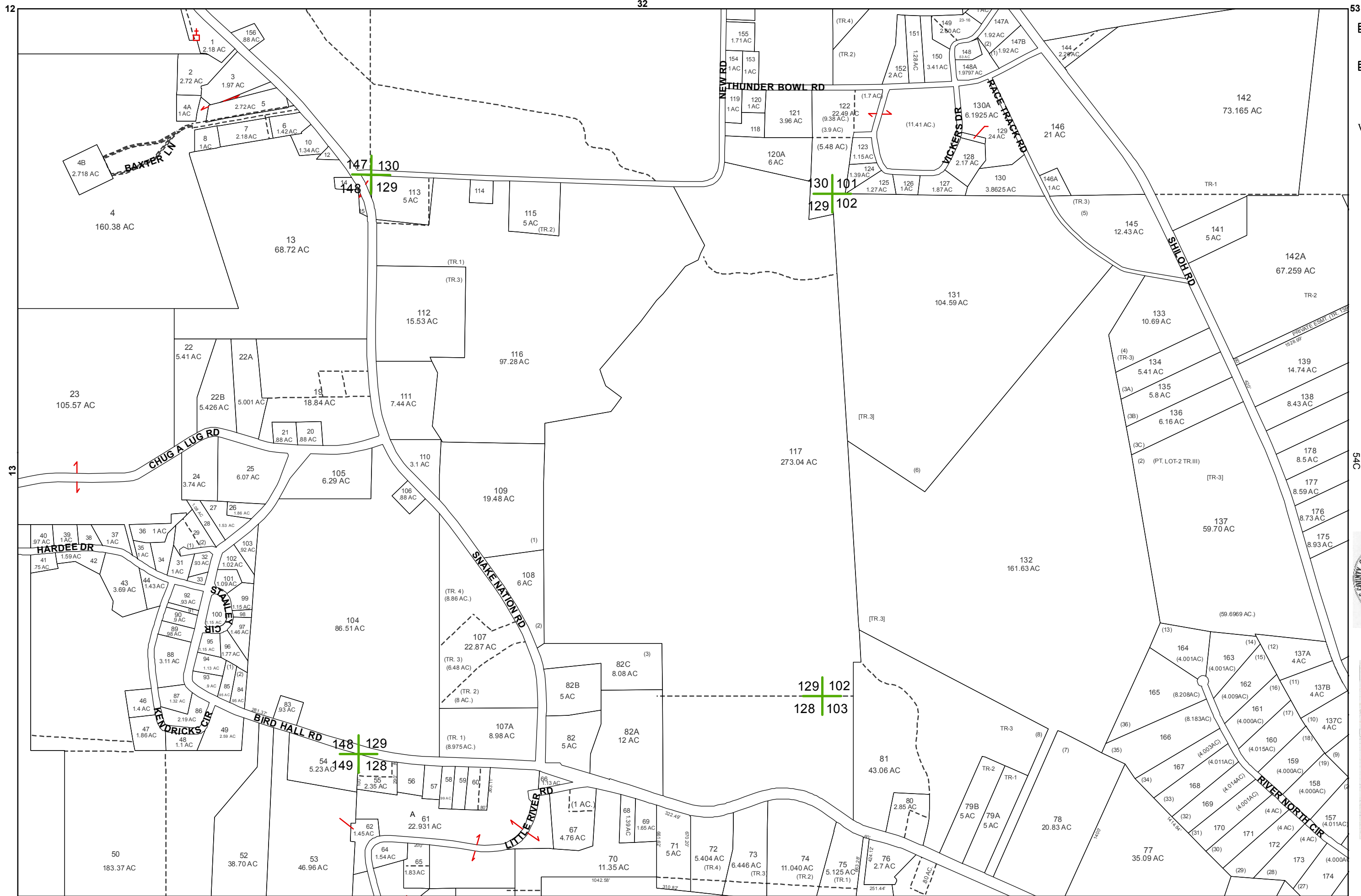
2015

LOWNDES COUNTY
GEORGIA

1 inch = 800 feet



32



2015

LOWNDES COUNTY
GEORGIA

1 inch = 800 feet

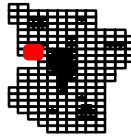


33

13

33

54C



2015

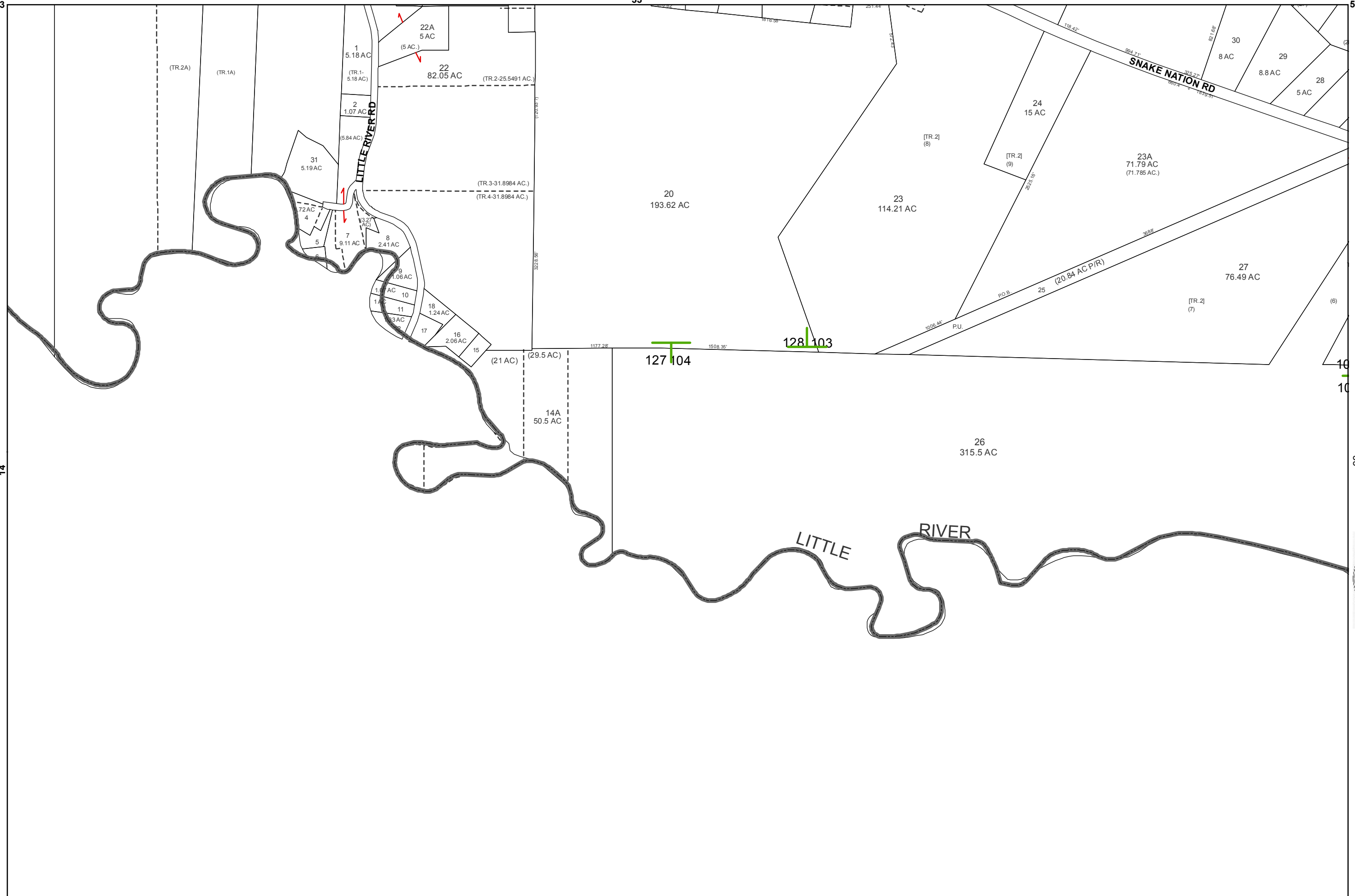
LOWNDES COUNTY
GEORGIA

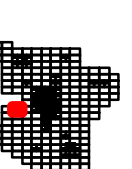
1 inch = 800 feet



34

14





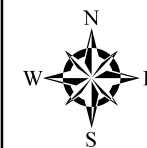
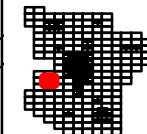
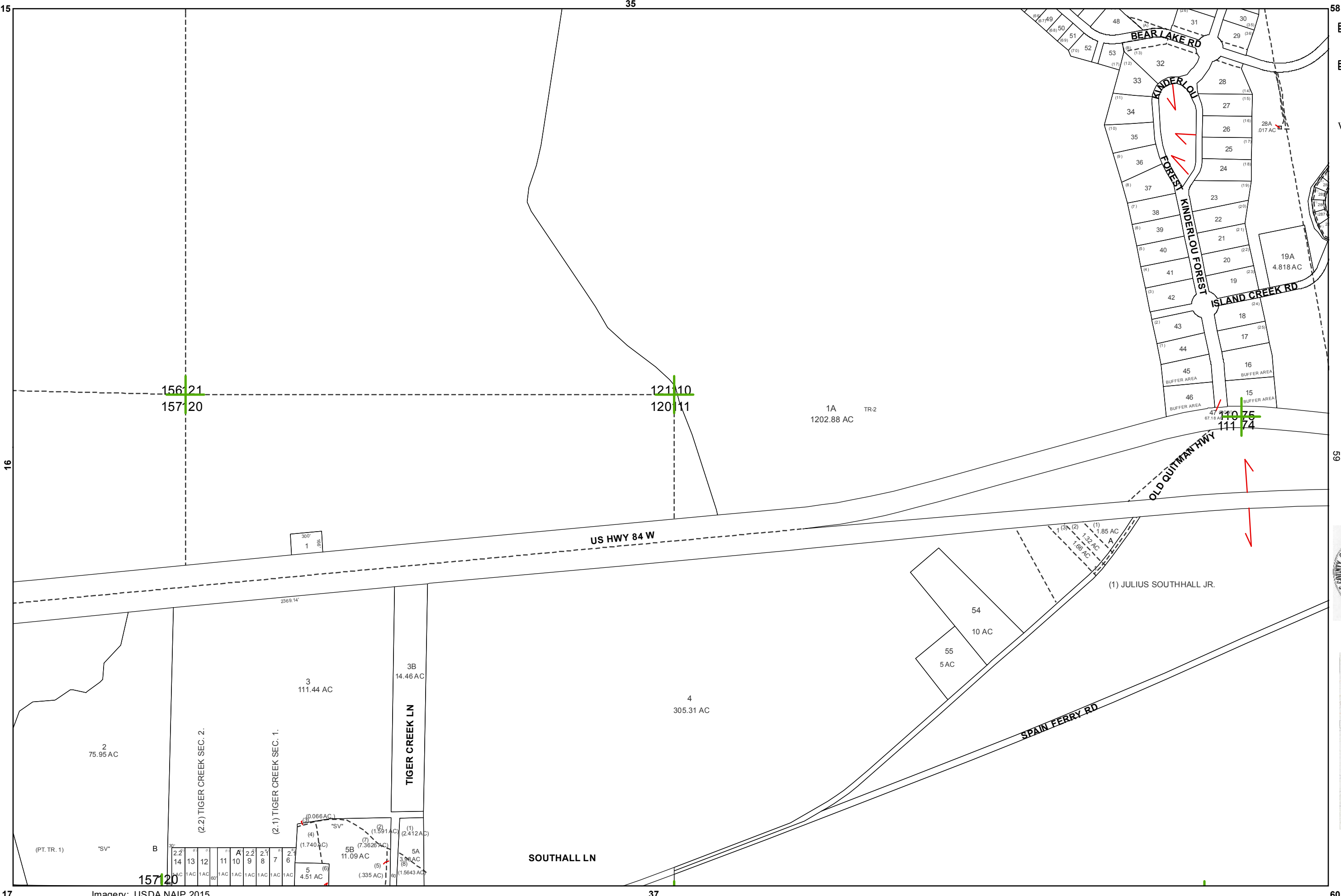
2015

LOWNDES COUNTY
GEORGIA

1 inch = 800 feet



35



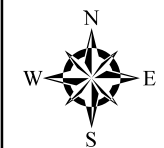
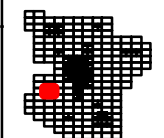
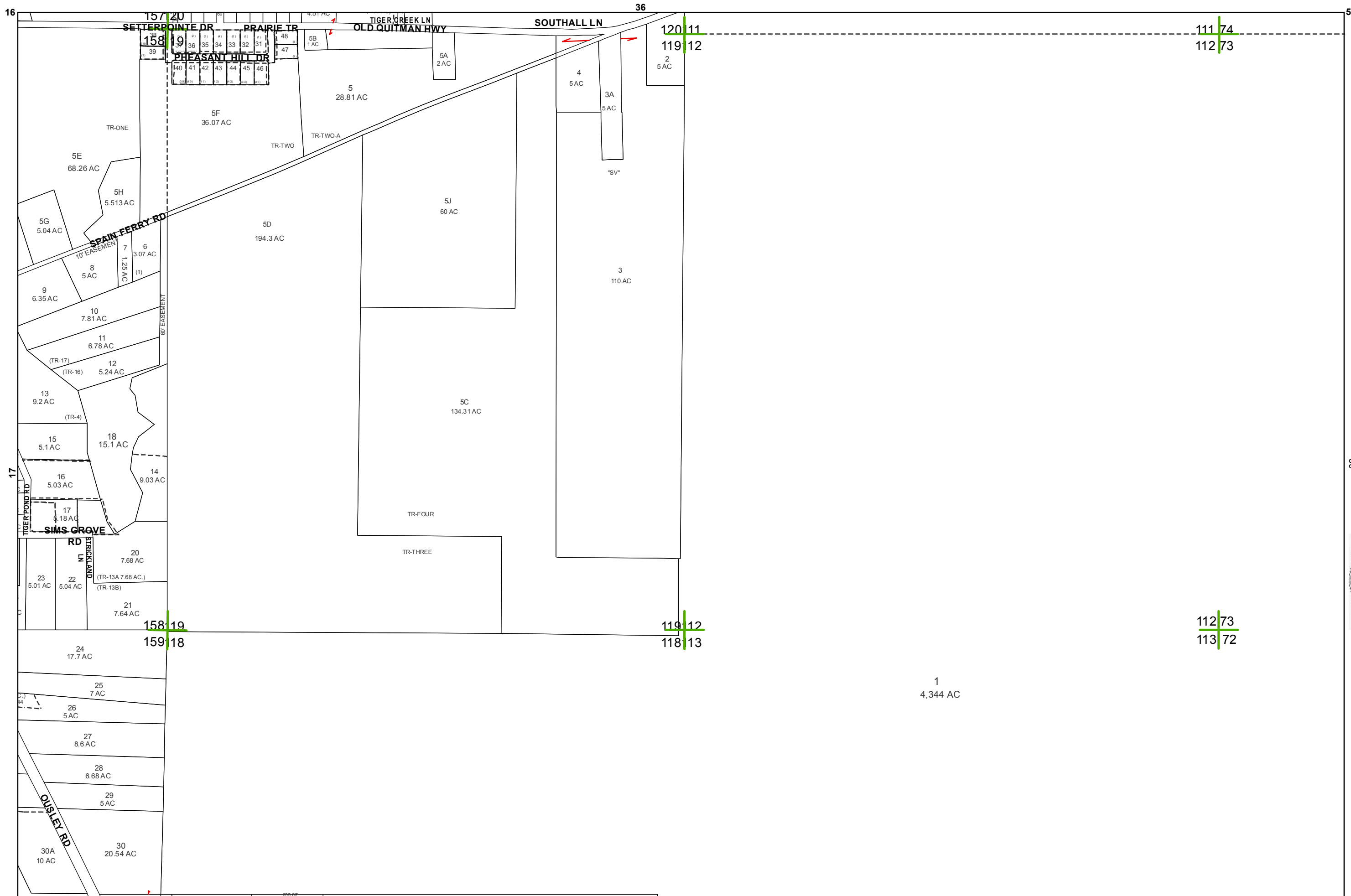
2015

LOWNDES COUNTY
GEORGIA

1 inch = 800 feet



36

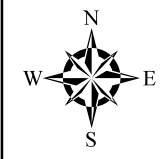
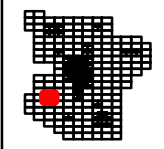
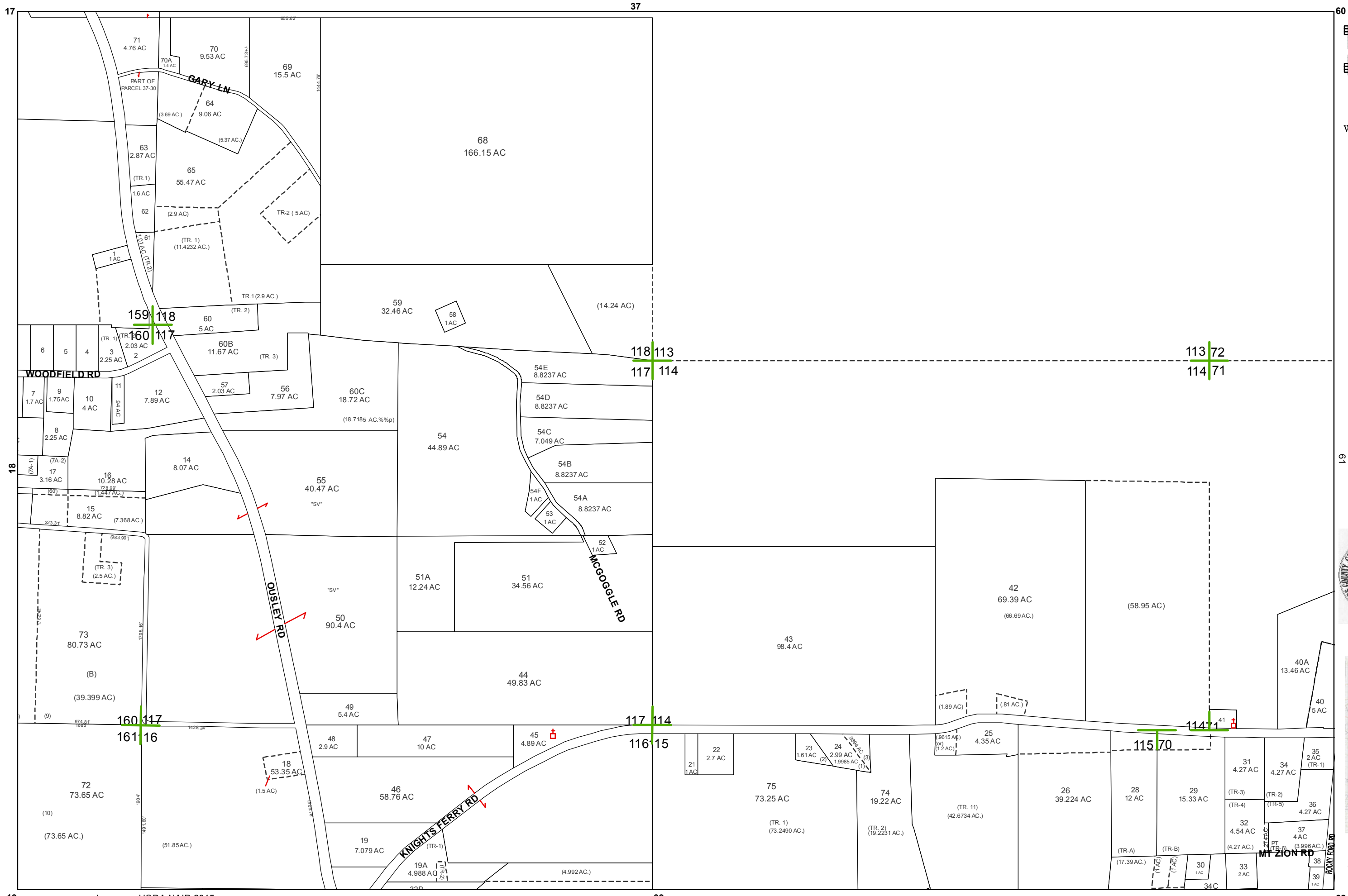


2015
 LOWNDES COUNTY
 GEORGIA

09
 1 inch = 800 feet



37



2015

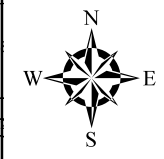
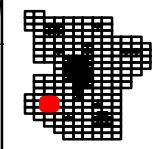
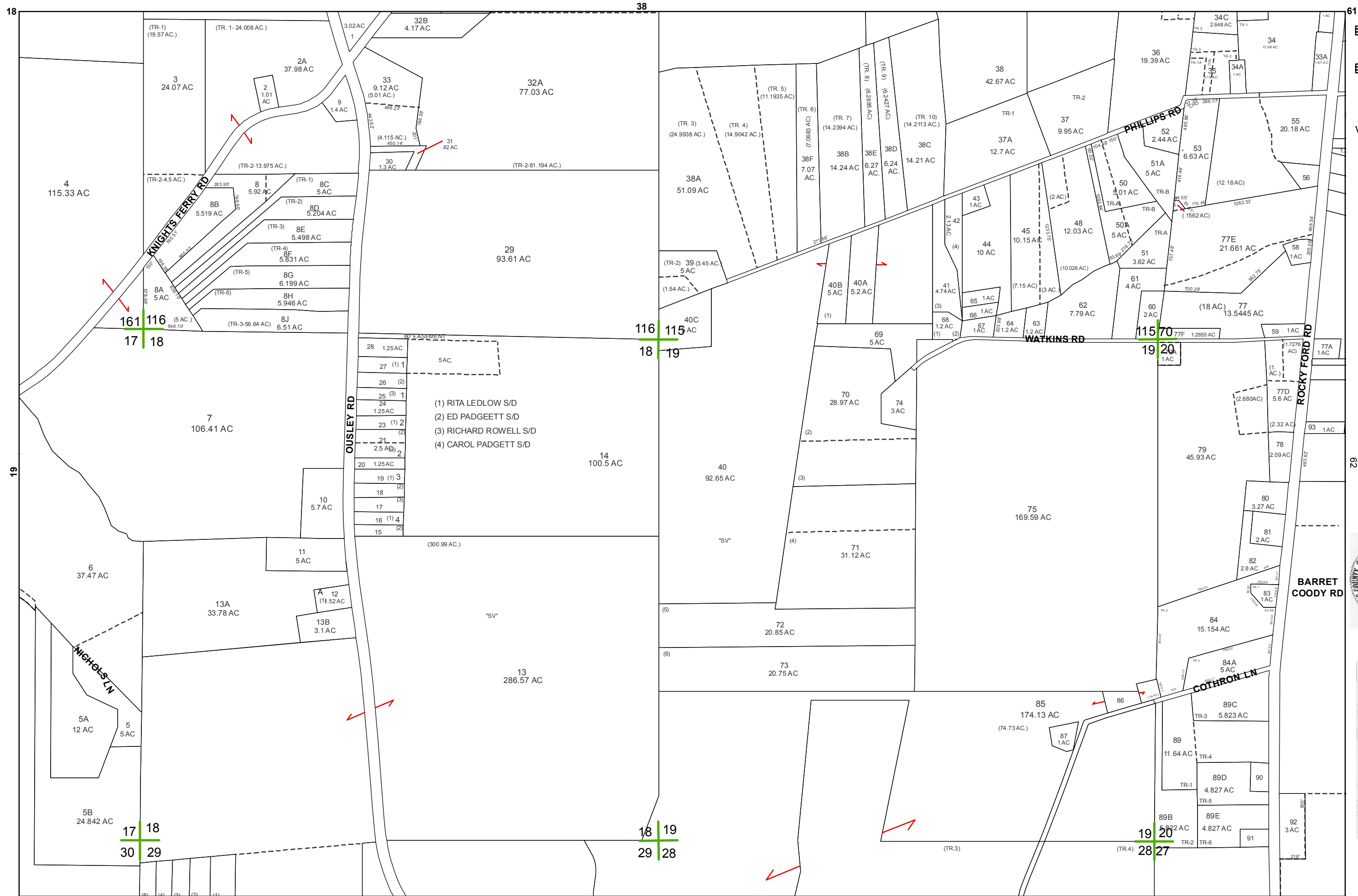
LOWNDES COUNTY
GEORGIA

1 inch = 800 feet



VALOR
Visit VALOR on the web at: WWW.VALORGIS.COM

38



2015

LOWNDES COUNTY
GEORGIA

1 inch = 800 feet



BOARD OF ASSESSORS



39