

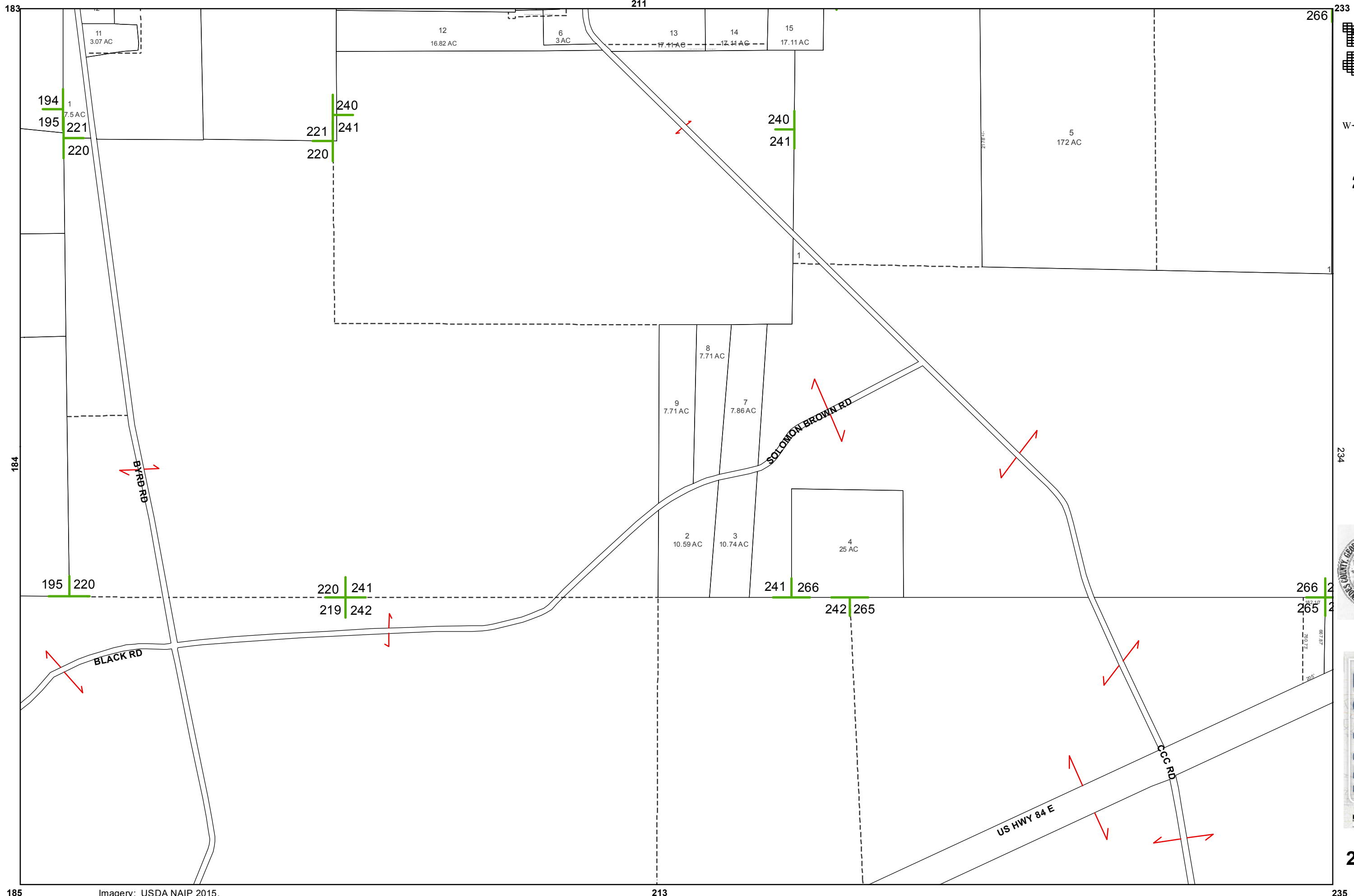
2015

LOWNDES COUNTY
GEORGIA

1 inch = 800 feet



211

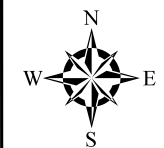
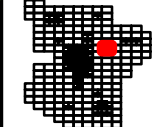


185

Imagery: USDA NAIP 2015.

213

235



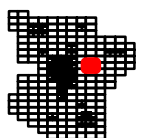
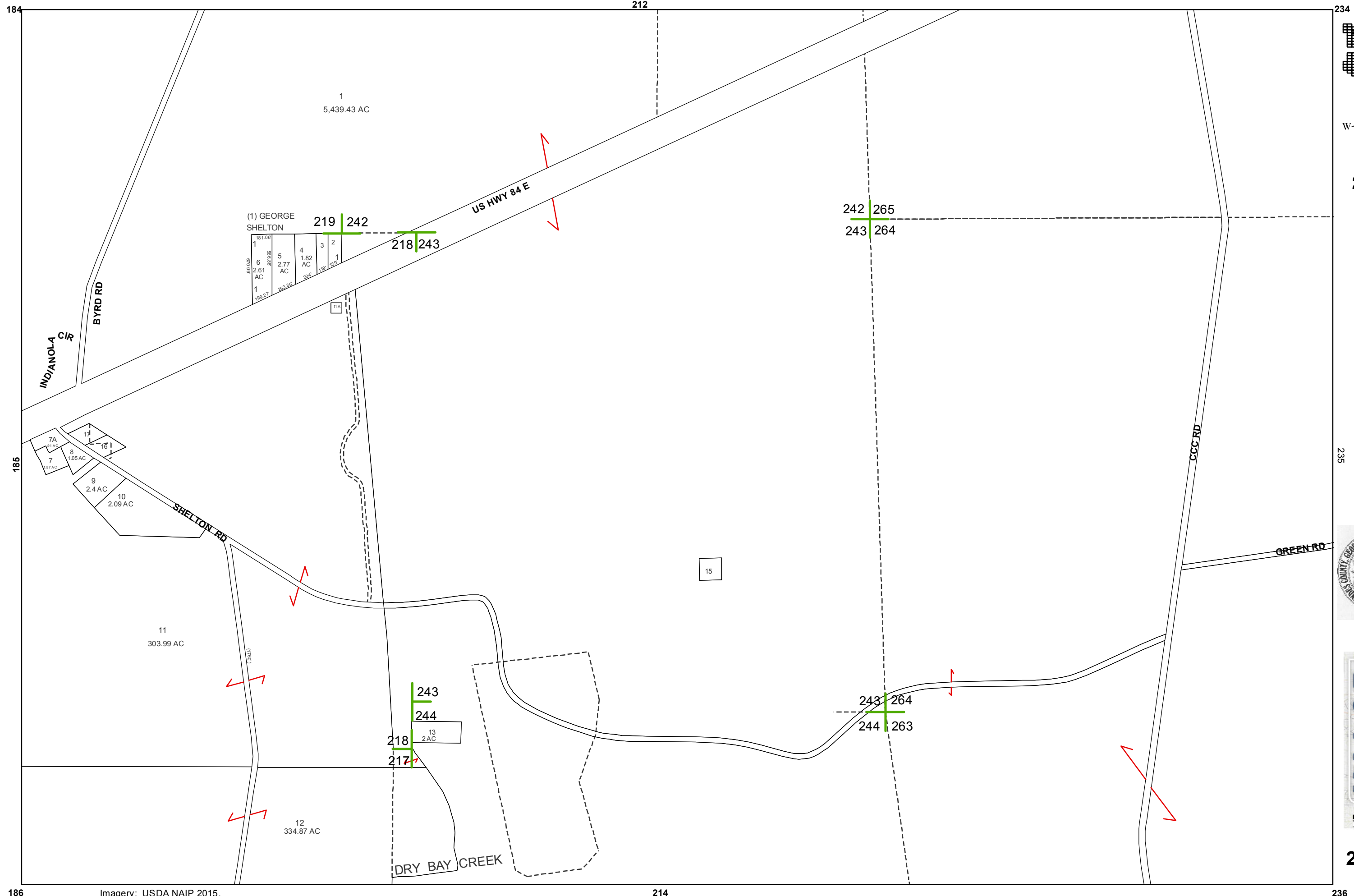
2015

LOWNDES COUNTY
GEORGIA

1 inch = 800 feet



212



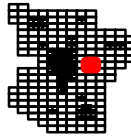
2015

LOWNDES COUNTY
GEORGIA

1 inch = 800 feet



213



2015

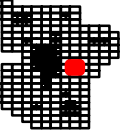
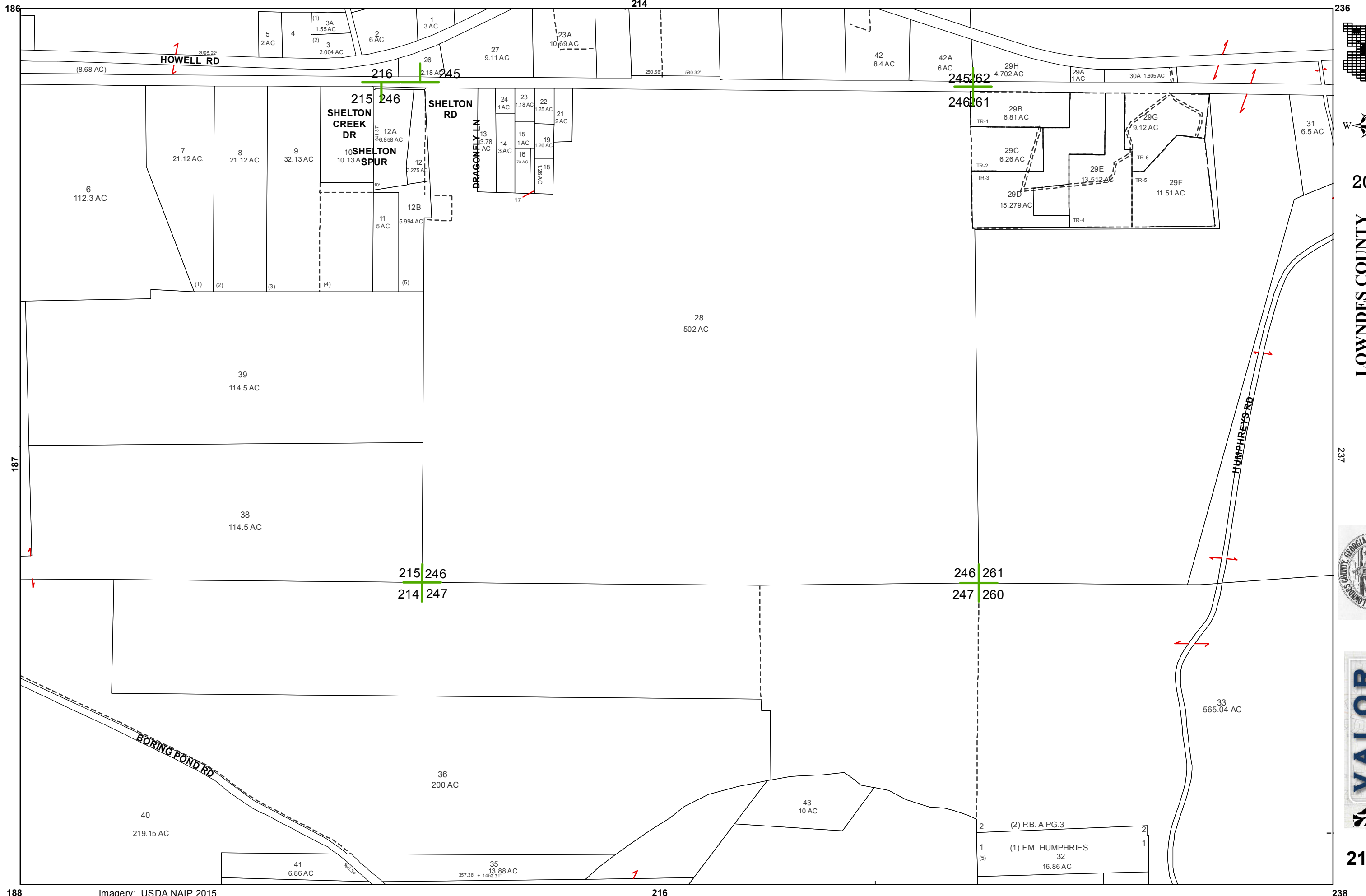
LOWNDES COUNTY
GEORGIA

1 inch = 800 feet



214





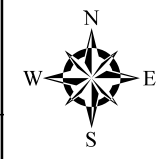
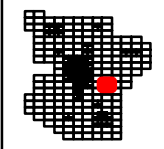
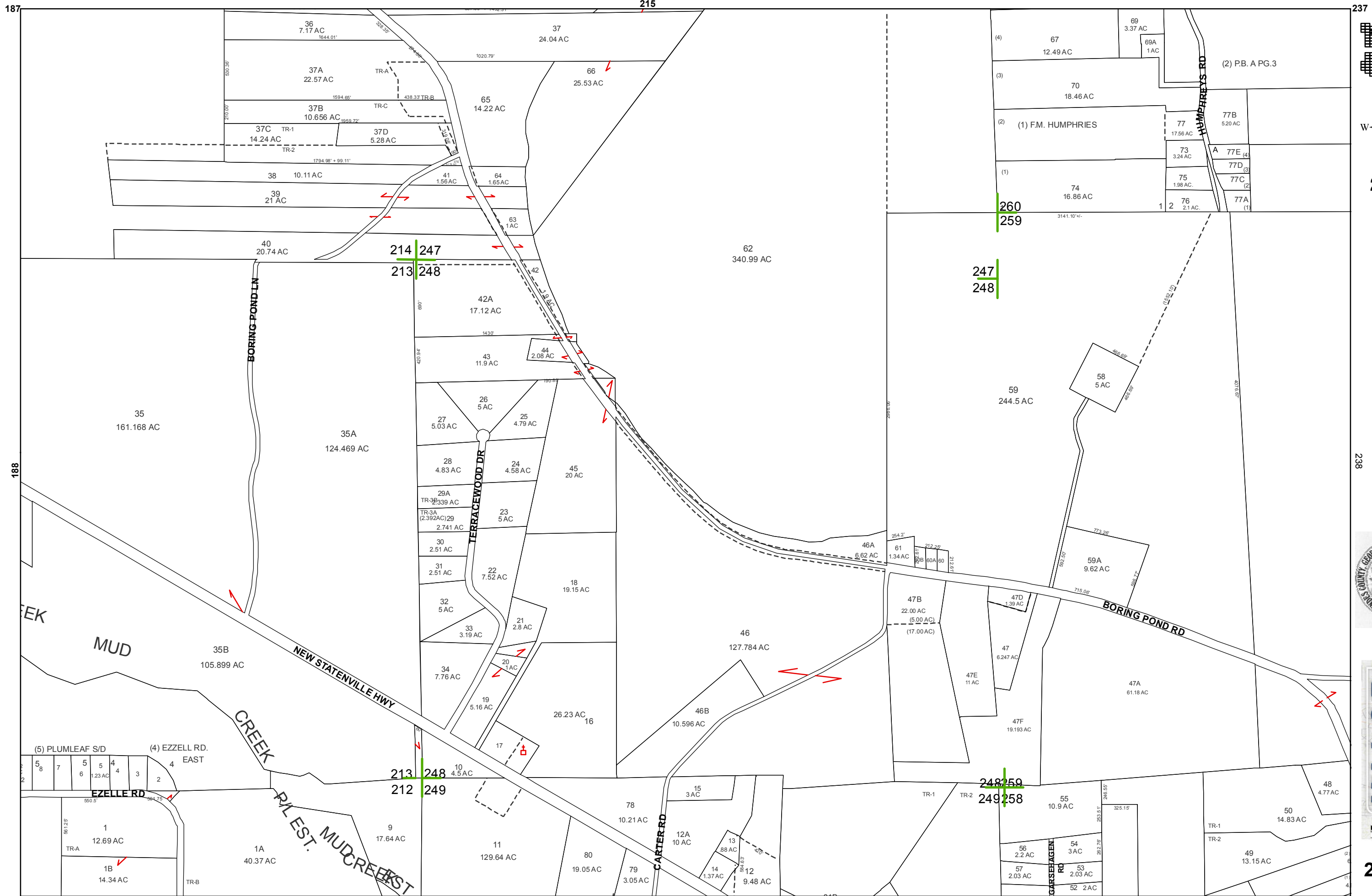
2015

LOWNDES COUNTY
GEORGIA

1 inch = 800 feet



215



2015

LOWNDES COUNTY
GEORGIA

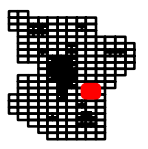
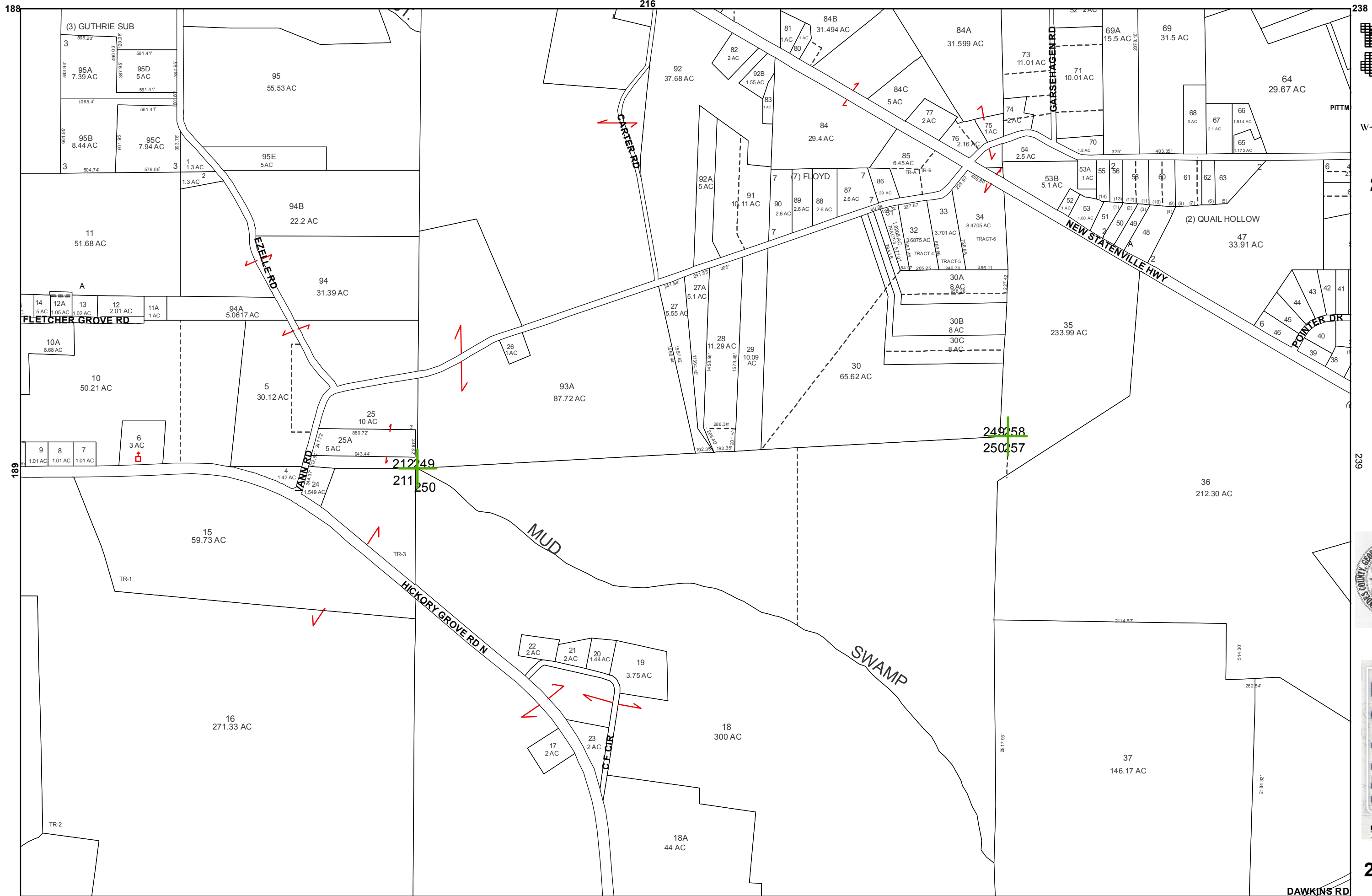
1 inch = 800 feet



BOARD OF ASSESSORS



216



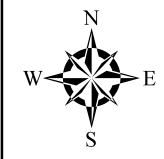
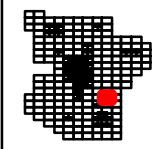
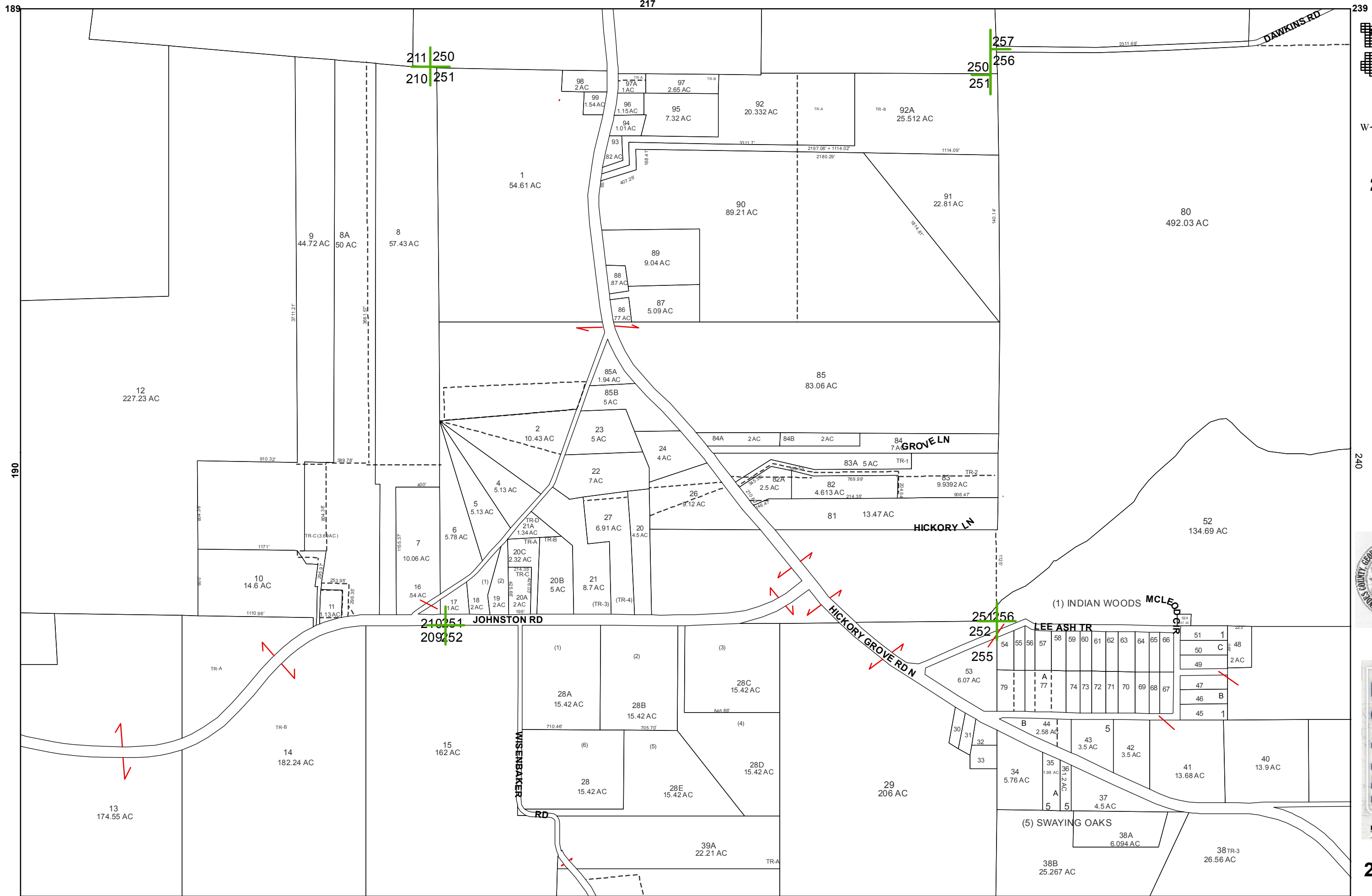
2015

LOWNDES COUNTY
GEORGIA

1 inch = 800 feet



217



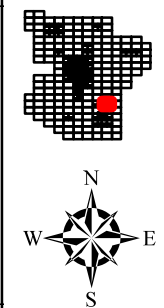
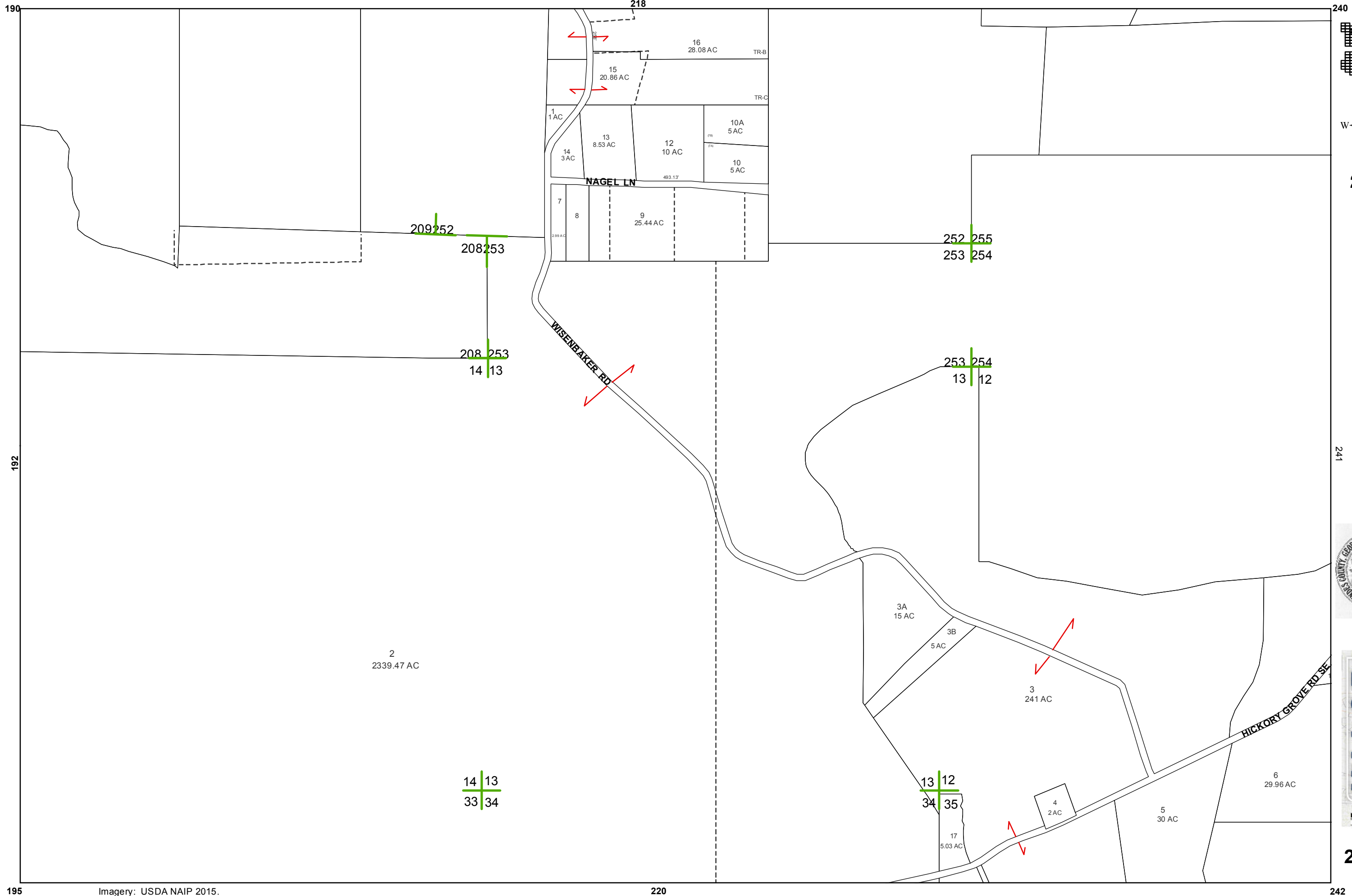
2015

LOWNDES COUNTY
GEORGIA

1 inch = 800 feet



218



2015
 LOWNDES COUNTY
 GEORGIA

1 inch = 800 feet
 241



219