

2015

LOWNDES COUNTY  
GEORGIA

1 inch = 800 feet



**VALOR**  
Visit VALOR on the web at: [WWW.VALORGIS.COM](http://WWW.VALORGIS.COM)

20



2015

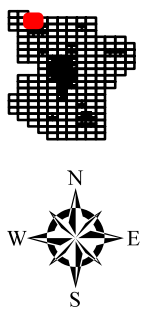
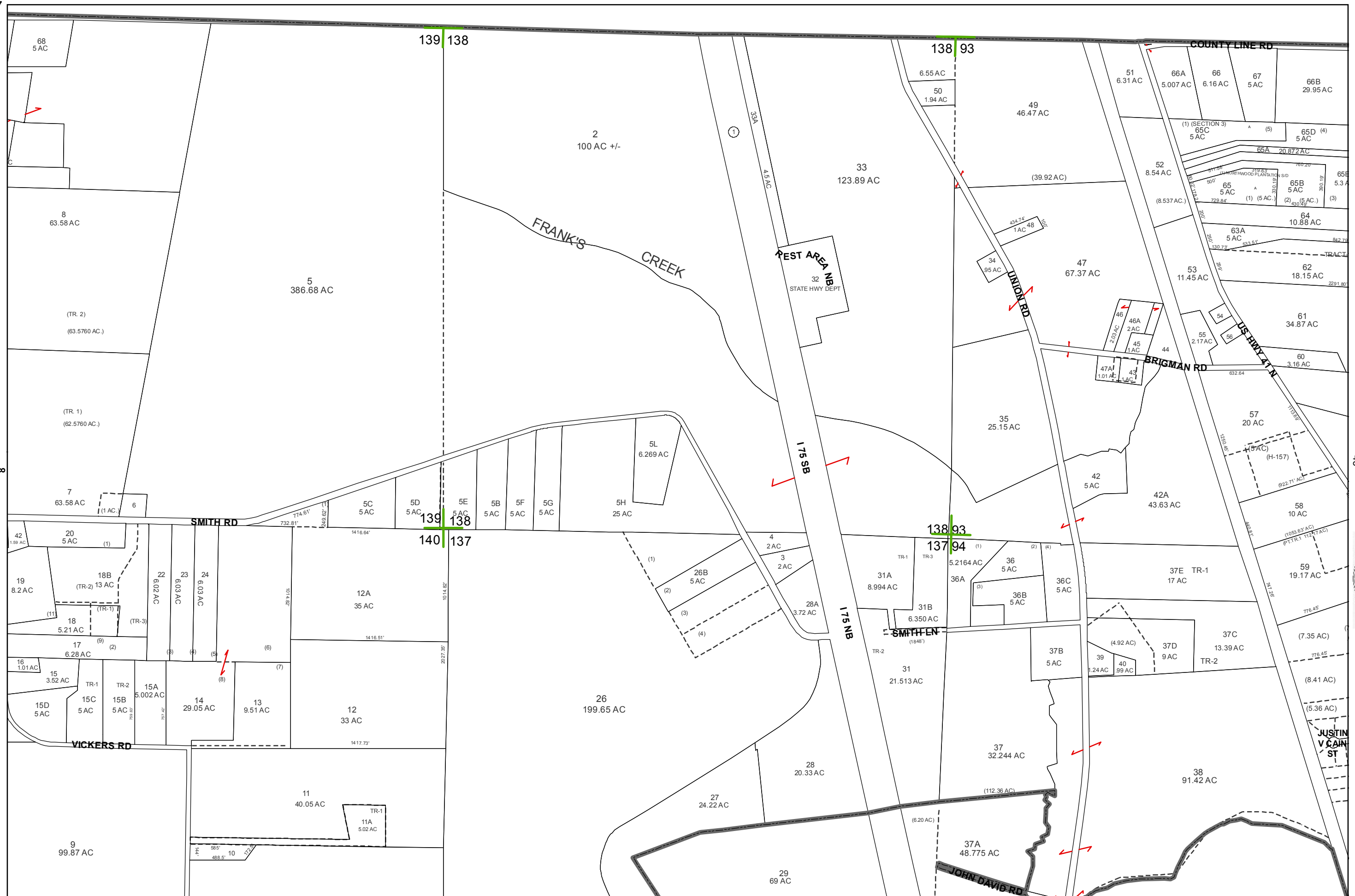
LOWNDES COUNTY  
GEORGIA

1 inch = 800 feet  
41



21



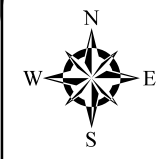
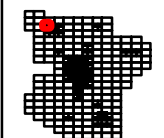
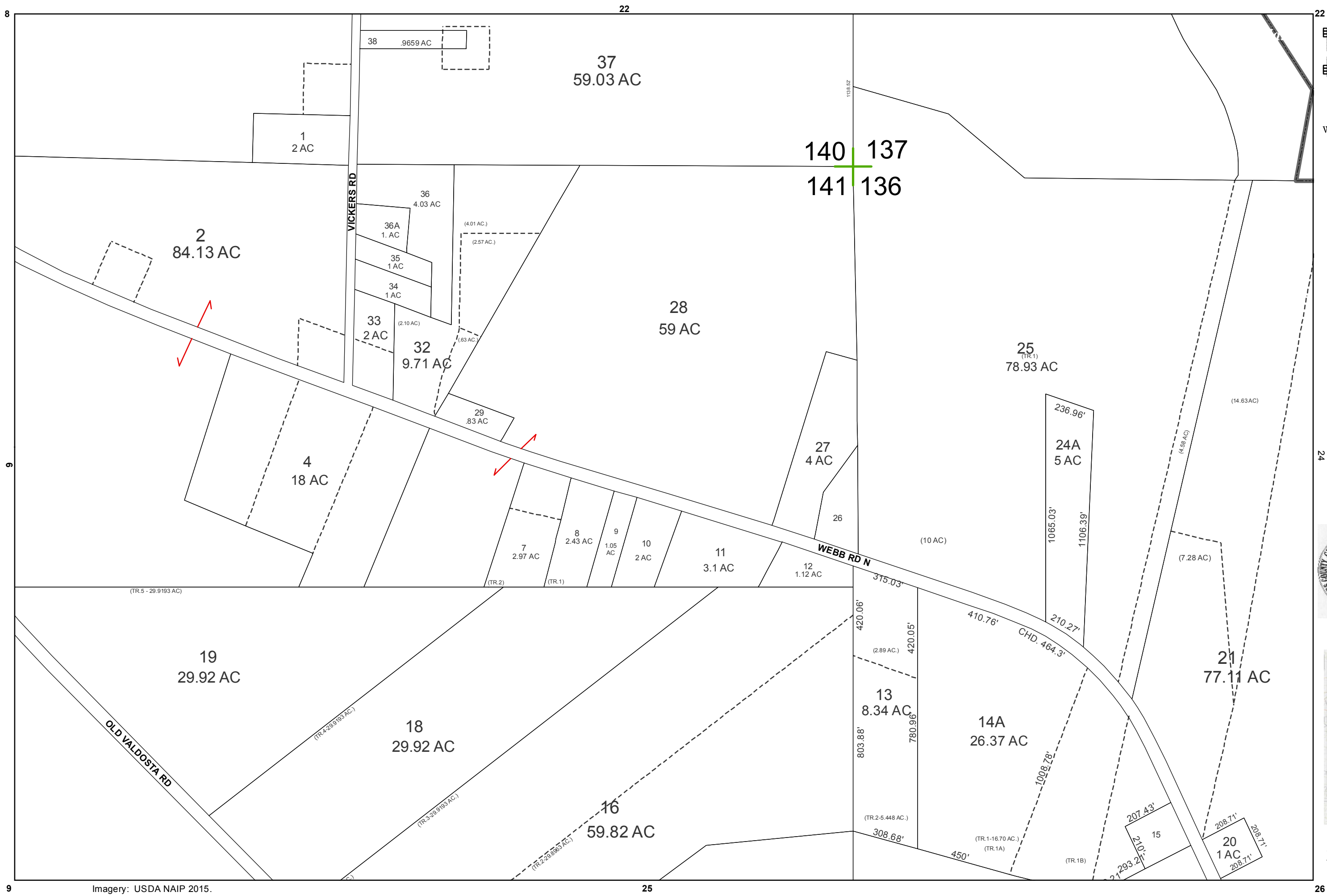


1 inch = 800 feet



**VALOR**

Visit VALOR on the web at: [WWW.VALORGIS.COM](http://WWW.VALORGIS.COM)



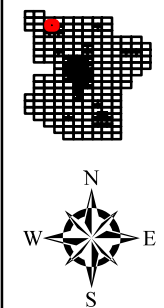
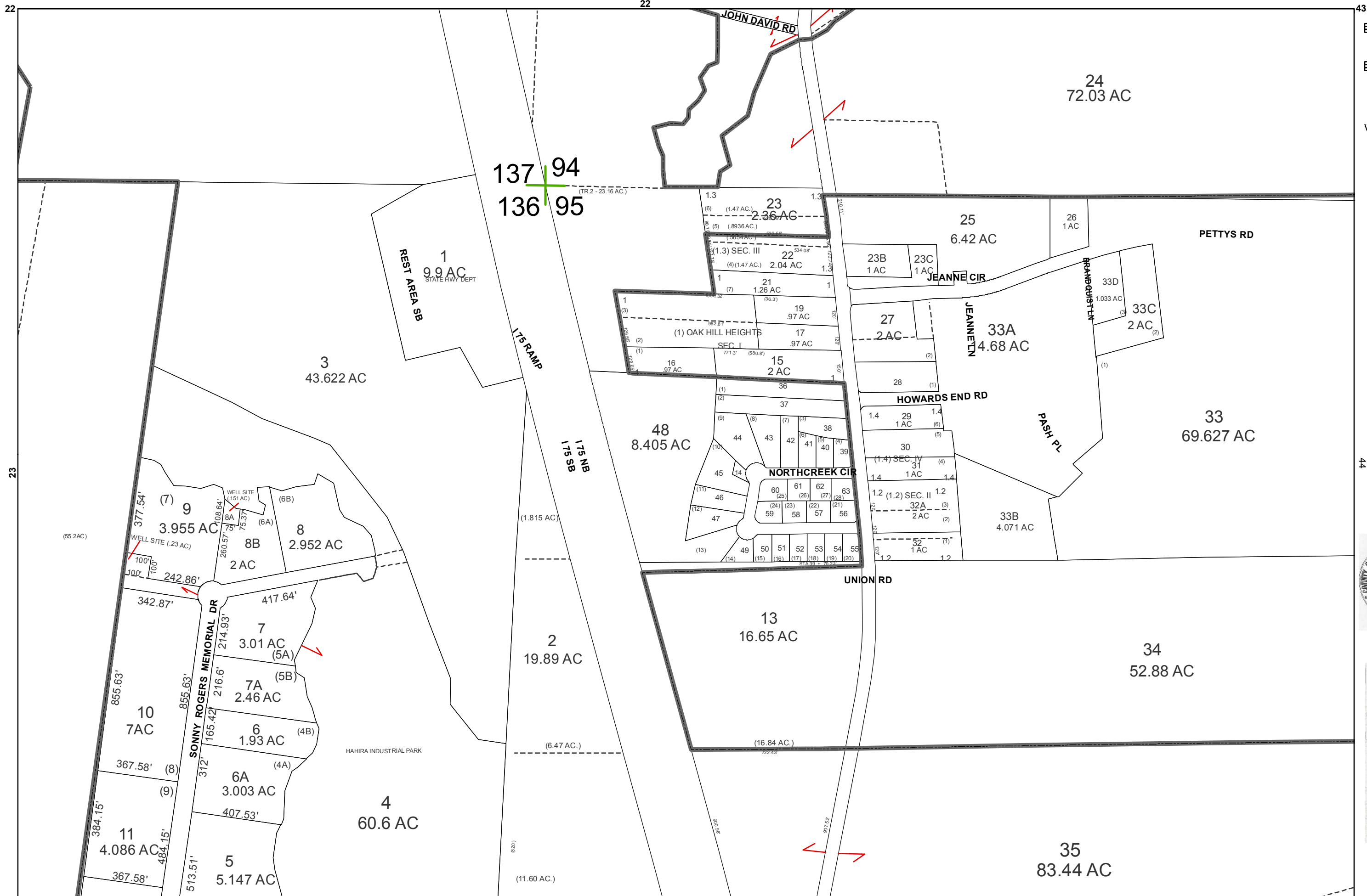
2015

LOWNDES COUNTY  
GEORGIA

1 inch = 400 feet



23



2015

LOWNDES COUNTY  
GEORGIA

1 inch = 400 feet

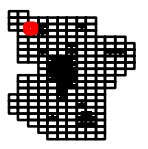


24



9  
9  
10

23  
24  
26  
27  
28



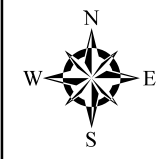
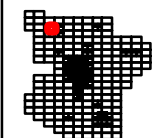
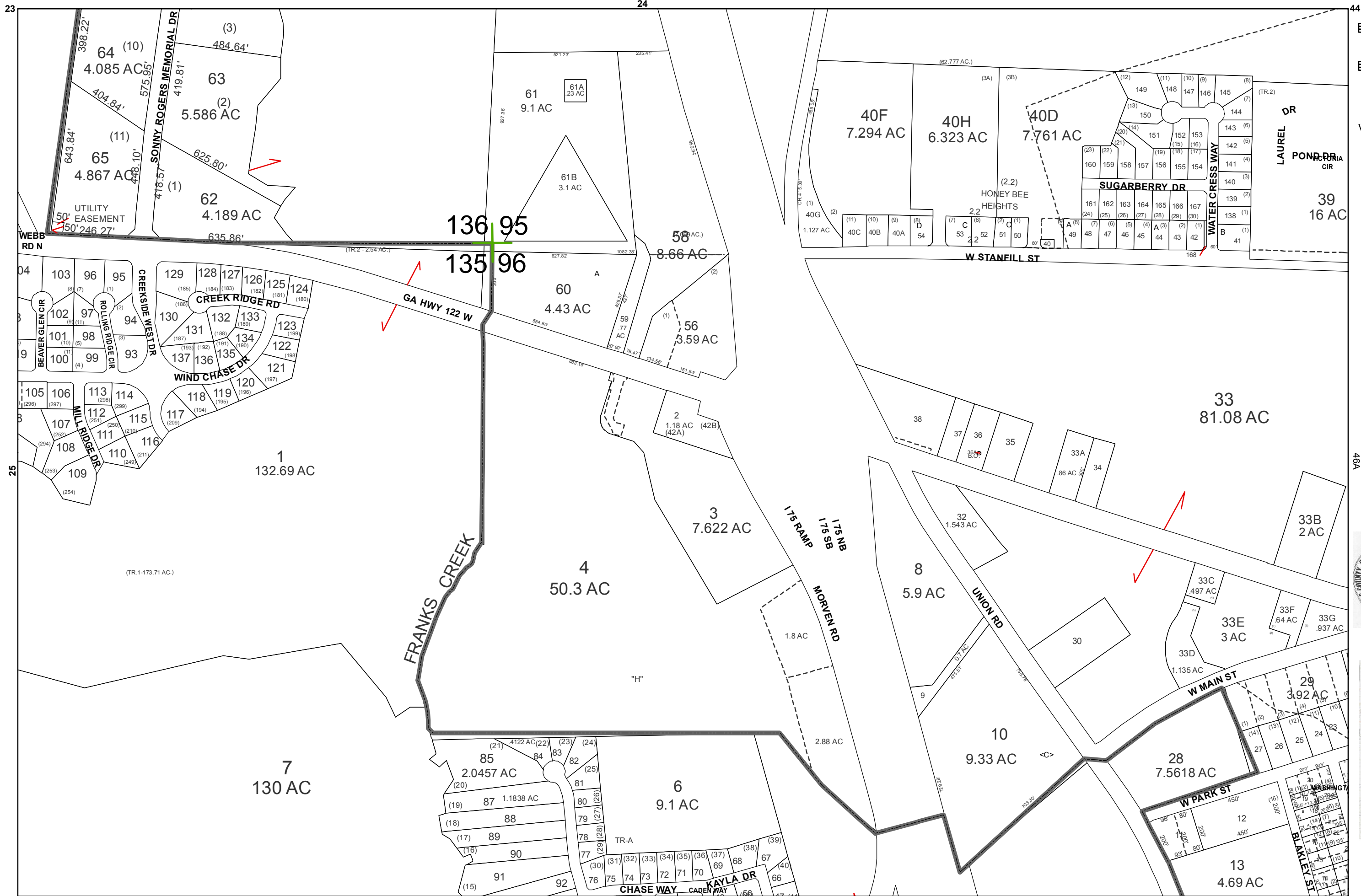
2015

LOWNDES COUNTY  
GEORGIA

1 inch = 400 feet



25



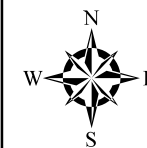
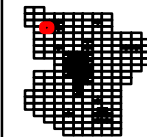
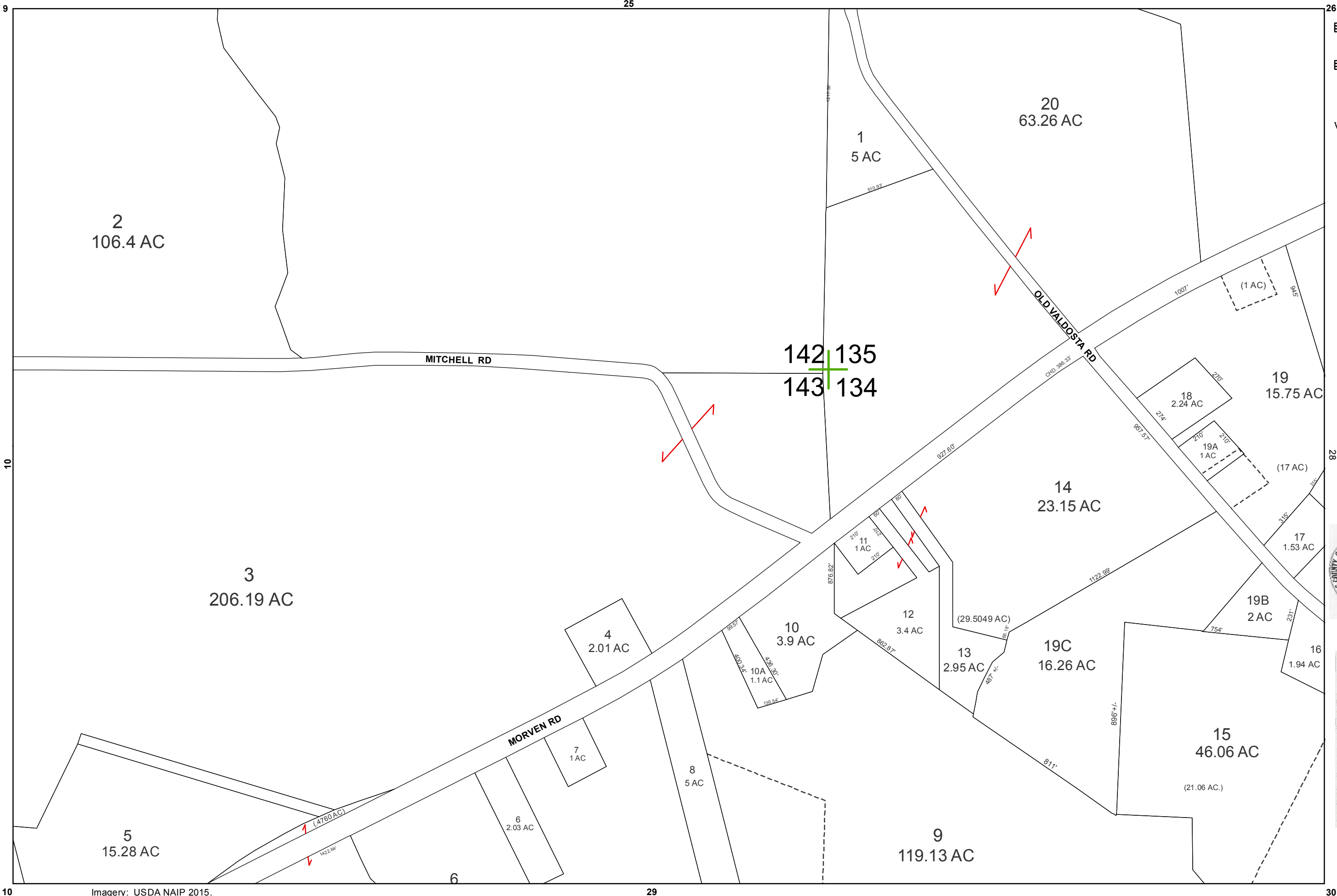
2015

LOWNDES COUNTY  
GEORGIA

1 inch = 400 feet



26



2015

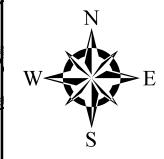
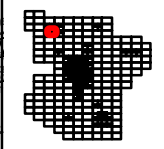
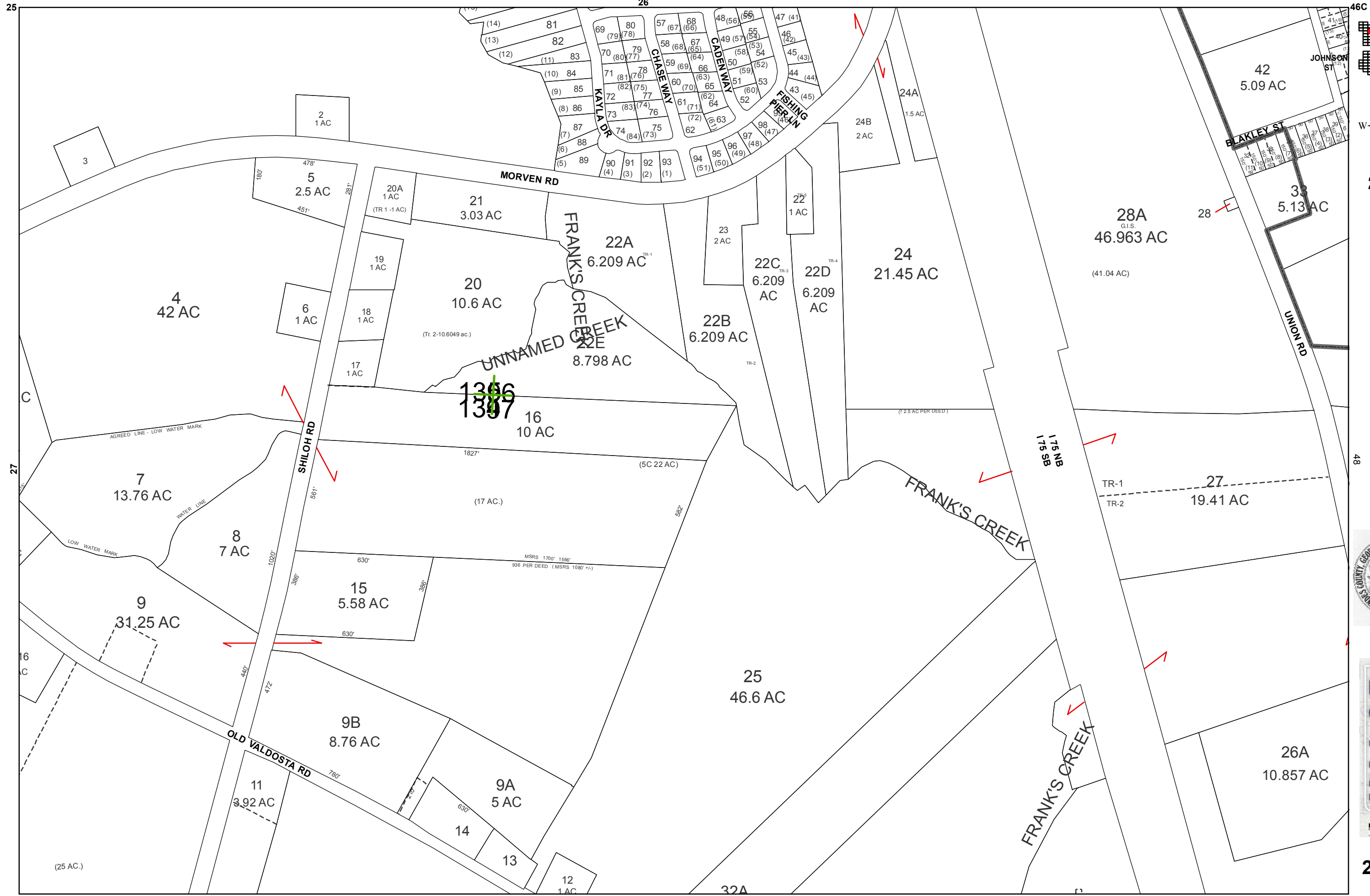
LOWNDES COUNTY  
GEORGIA

1 inch = 400 feet



27





2015

LOWNDES COUNTY  
GEORGIA

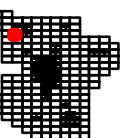
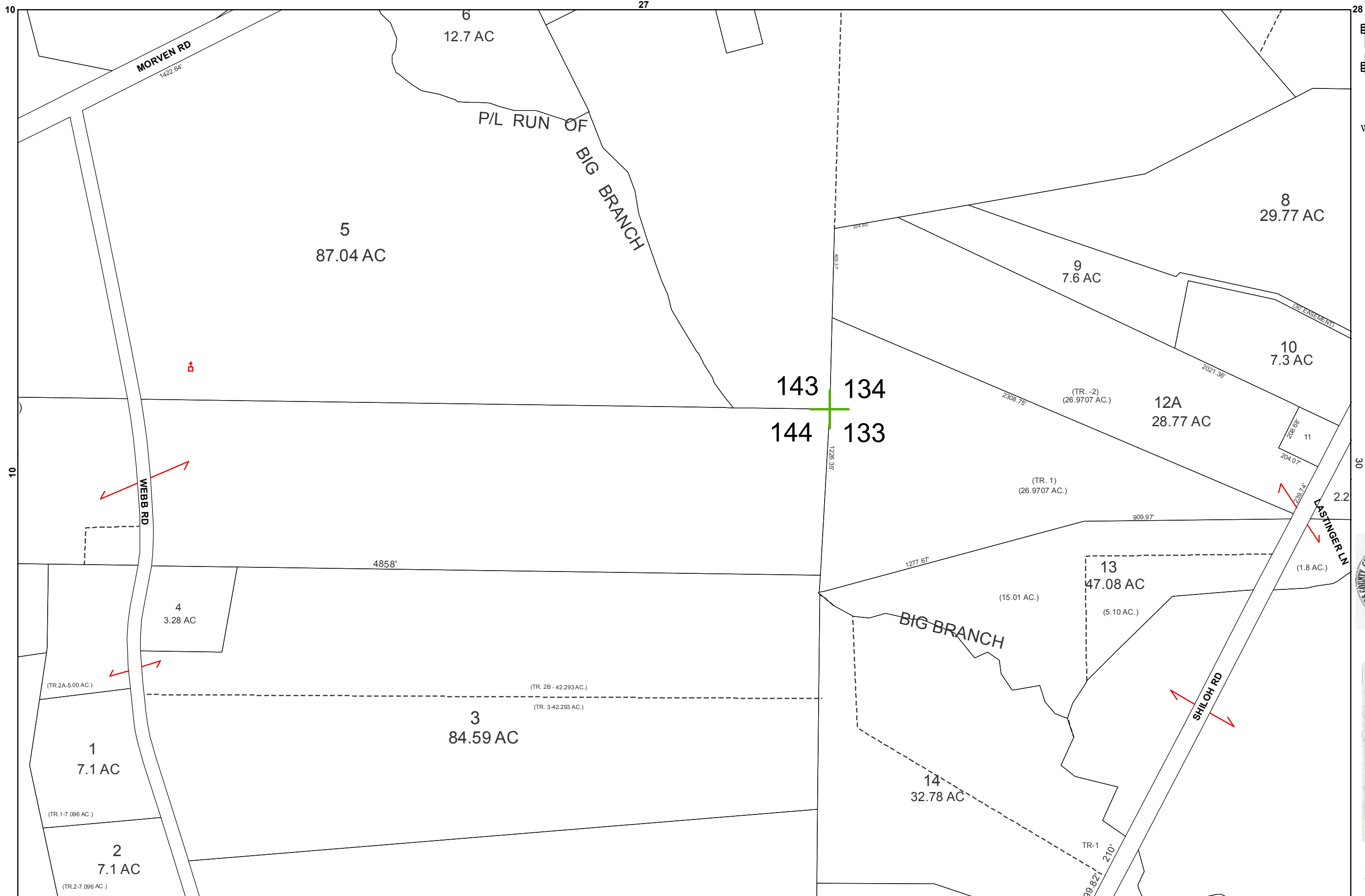
1 inch = 400 feet



BOARD OF ASSESSORS



28



2015

LOWNDES COUNTY  
GEORGIA

1 inch = 400 feet



29