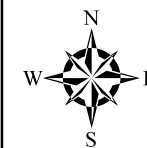
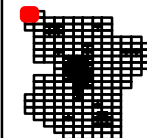


Imagery: USDA NAIP 2015.

2

231 230

8



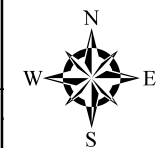
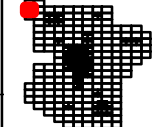
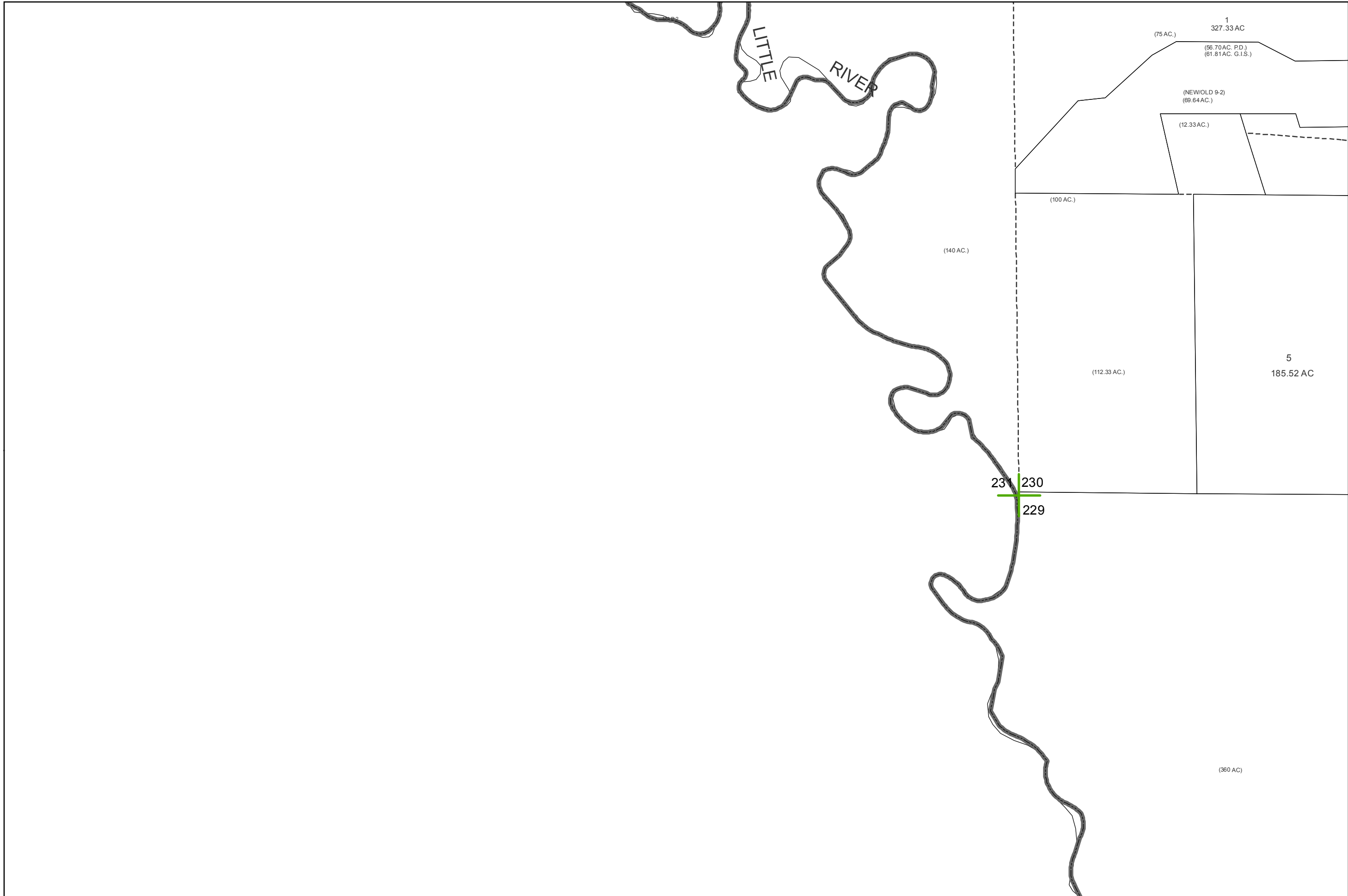
2015

LOWNDES COUNTY  
GEORGIA

1 inch = 800 feet



1

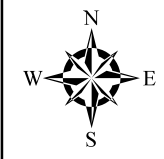
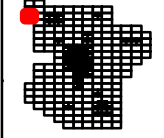


2015

LOWNDES COUNTY  
GEORGIA

1 inch = 800 feet





2015

LOWNDES COUNTY  
GEORGIA

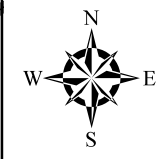
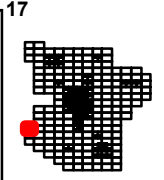
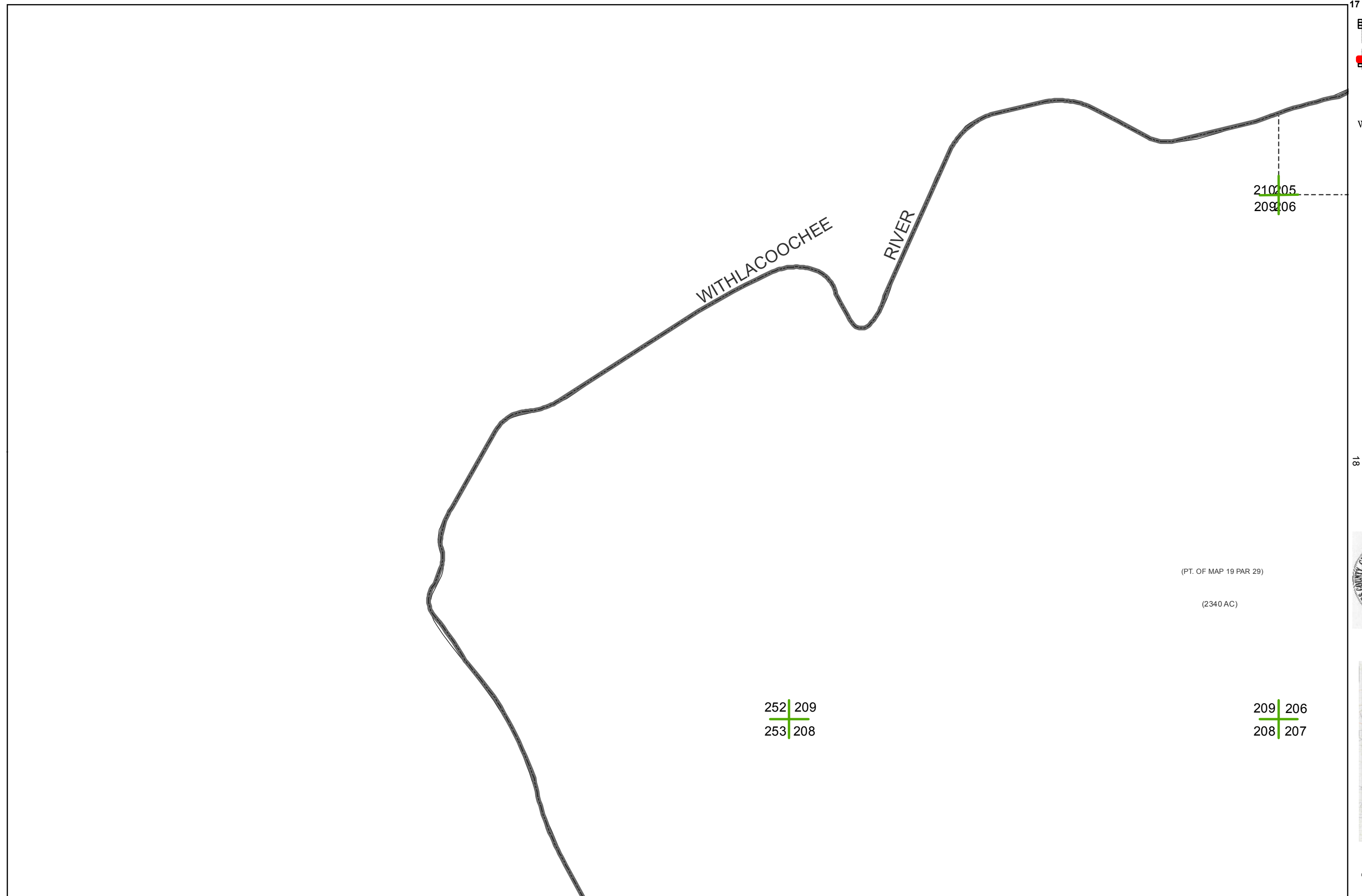
1 inch = 800 feet



(TR. 1 - 122.99 AC.)

LITTLE RIVER

GA  
HWY  
122 W



2015

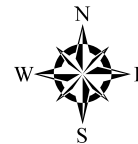
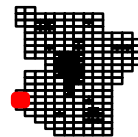
LOWNDES COUNTY  
GEORGIA

18  
1 inch = 800 feet



4

(PT. OF MAP 19 PAR 29)



2015

LOWNDES COUNTY  
GEORGIA

WITHLACOOCHIEE

(3 - 95.188 AC.)

208 | 207  
14 | 15

(2 - 85.191 AC.)

(TRACT 5  
217.69 AC.)

19  
1 inch = 800 feet

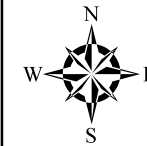
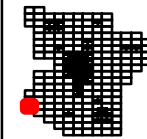


(1 - 75.195 AC.)

(TRACT 4)  
(255.574 AC.)

14 | 15  
33 | 32



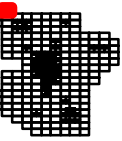
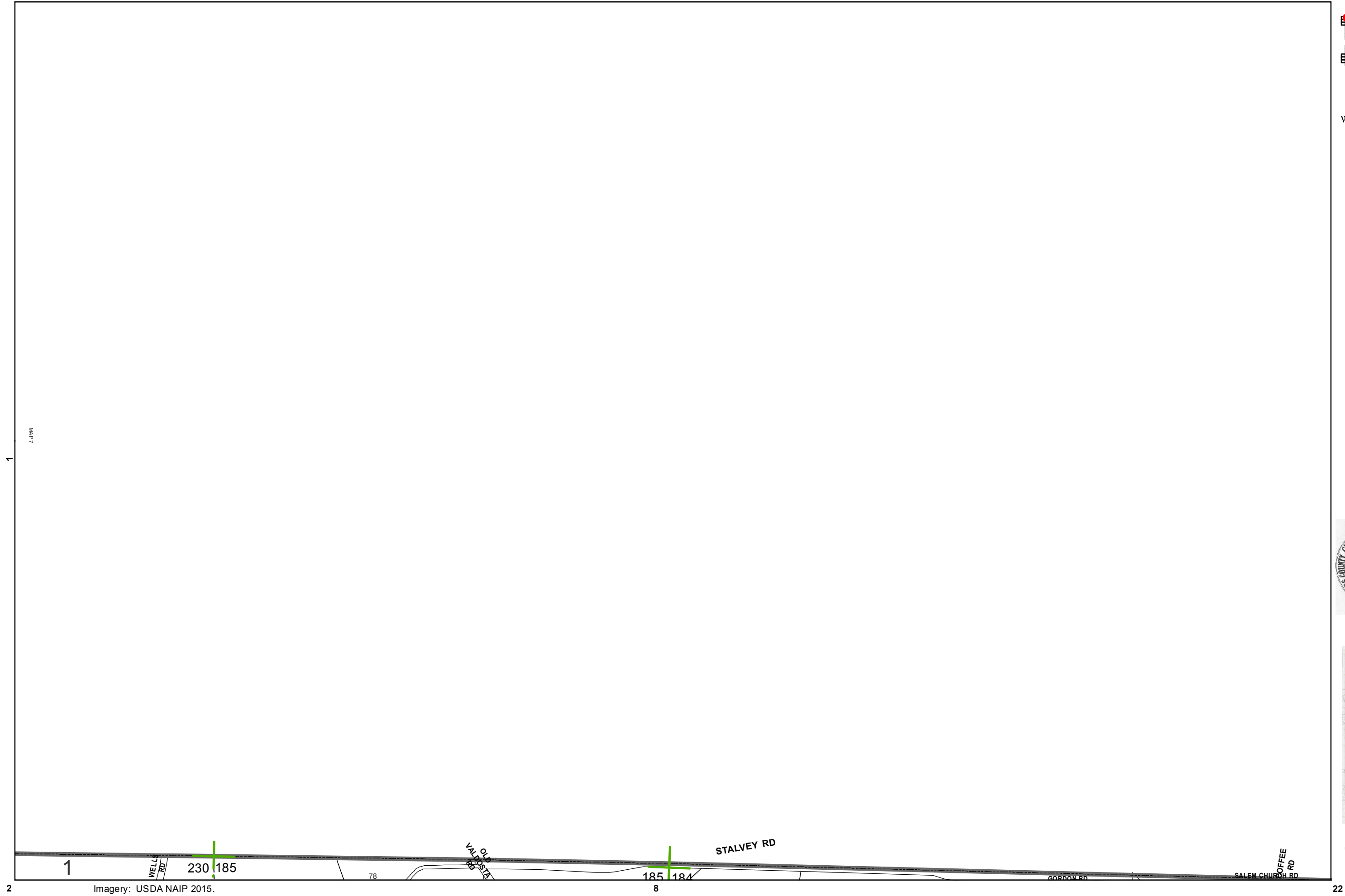


2015

**LOWNDES COUNTY  
GEORGIA**

1 inch = 800 feet



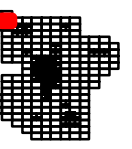
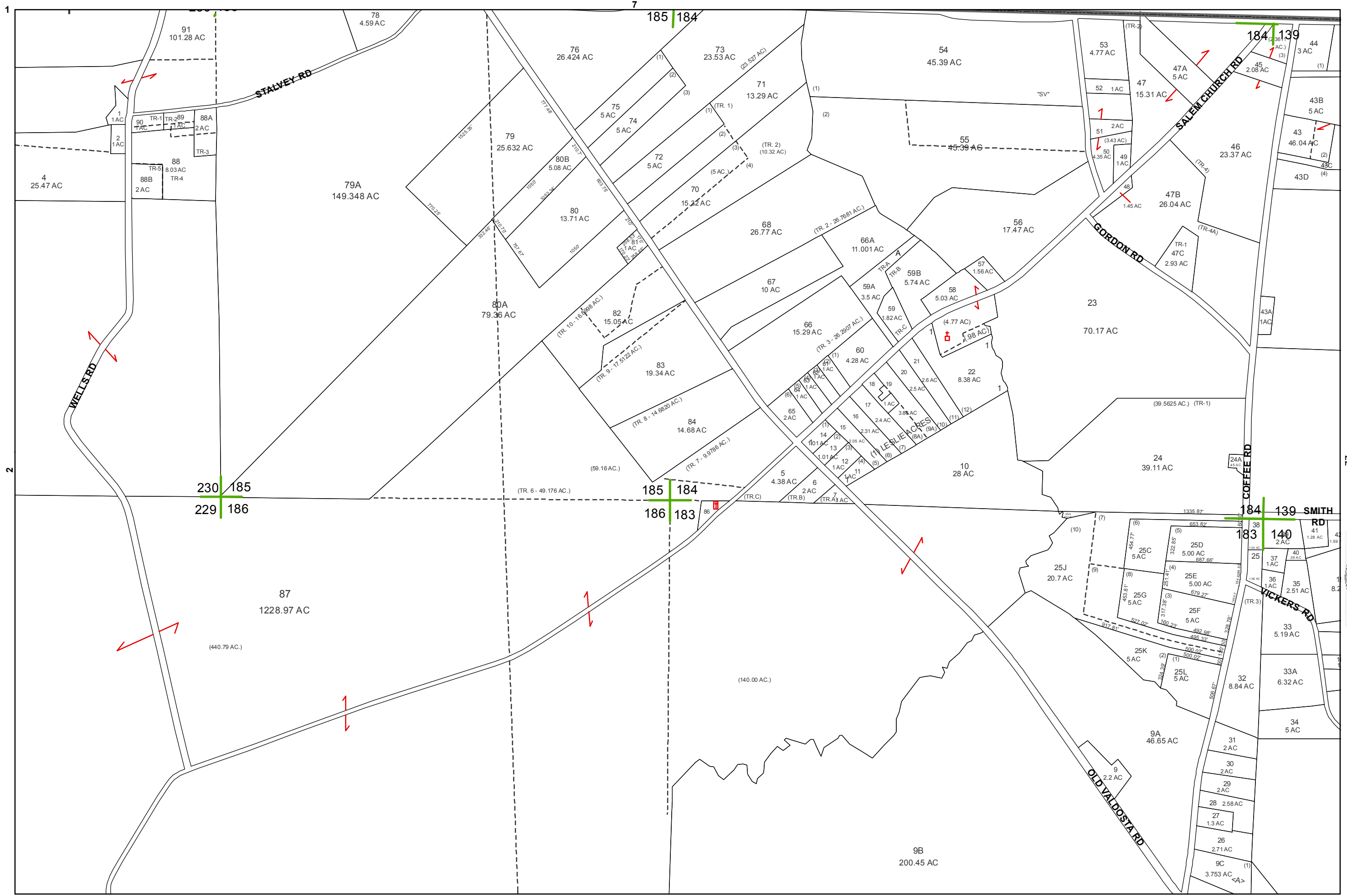


2015

LOWNDES COUNTY  
GEORGIA

1 inch = 800 feet





2015

LOWNDES COUNTY  
GEORGIA

1 inch = 800 feet

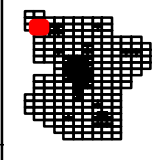
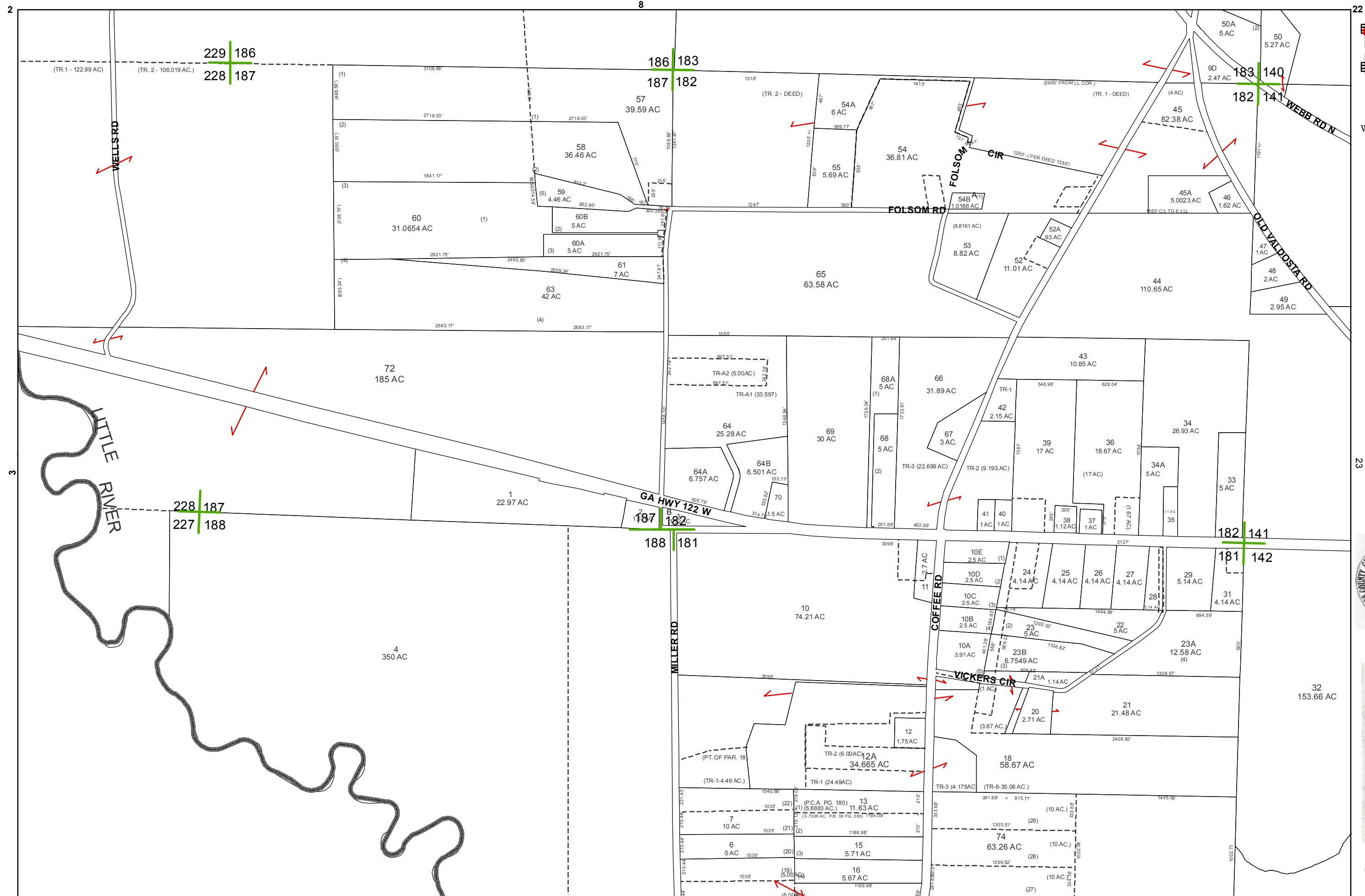


BOARD OF ASSESSORS



8





2015

LOWNDES COUNTY  
GEORGIA

1 inch = 800 feet





2015

LOWNDES COUNTY  
GEORGIA

1 inch = 800 feet



10

