

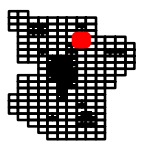
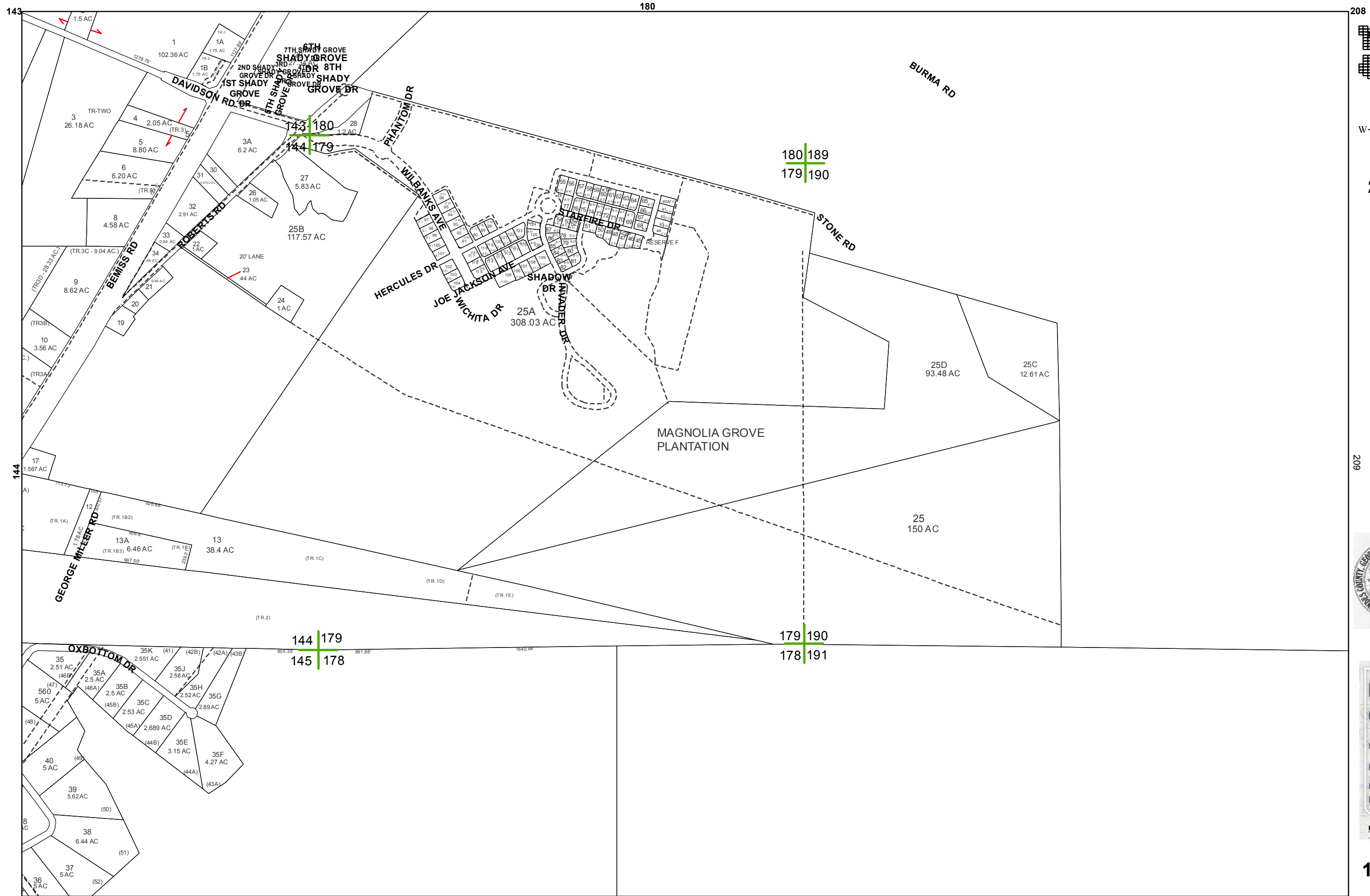
2015

LOWNDES COUNTY  
GEORGIA

1 inch = 800 feet



180



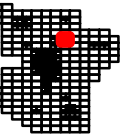
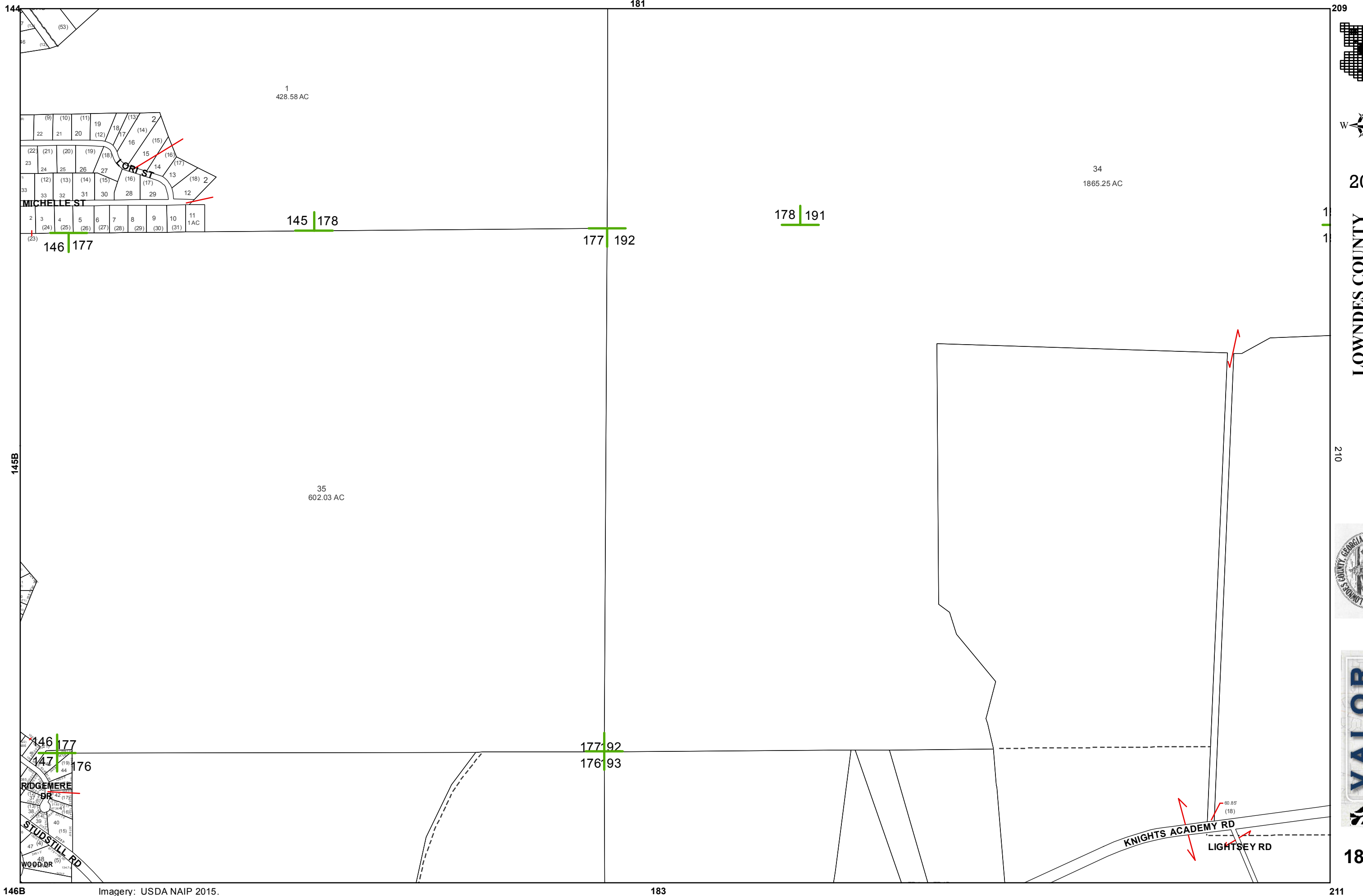
2015

LOWNDES COUNTY  
GEORGIA

1 inch = 800 feet  
209



181



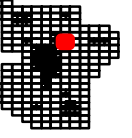
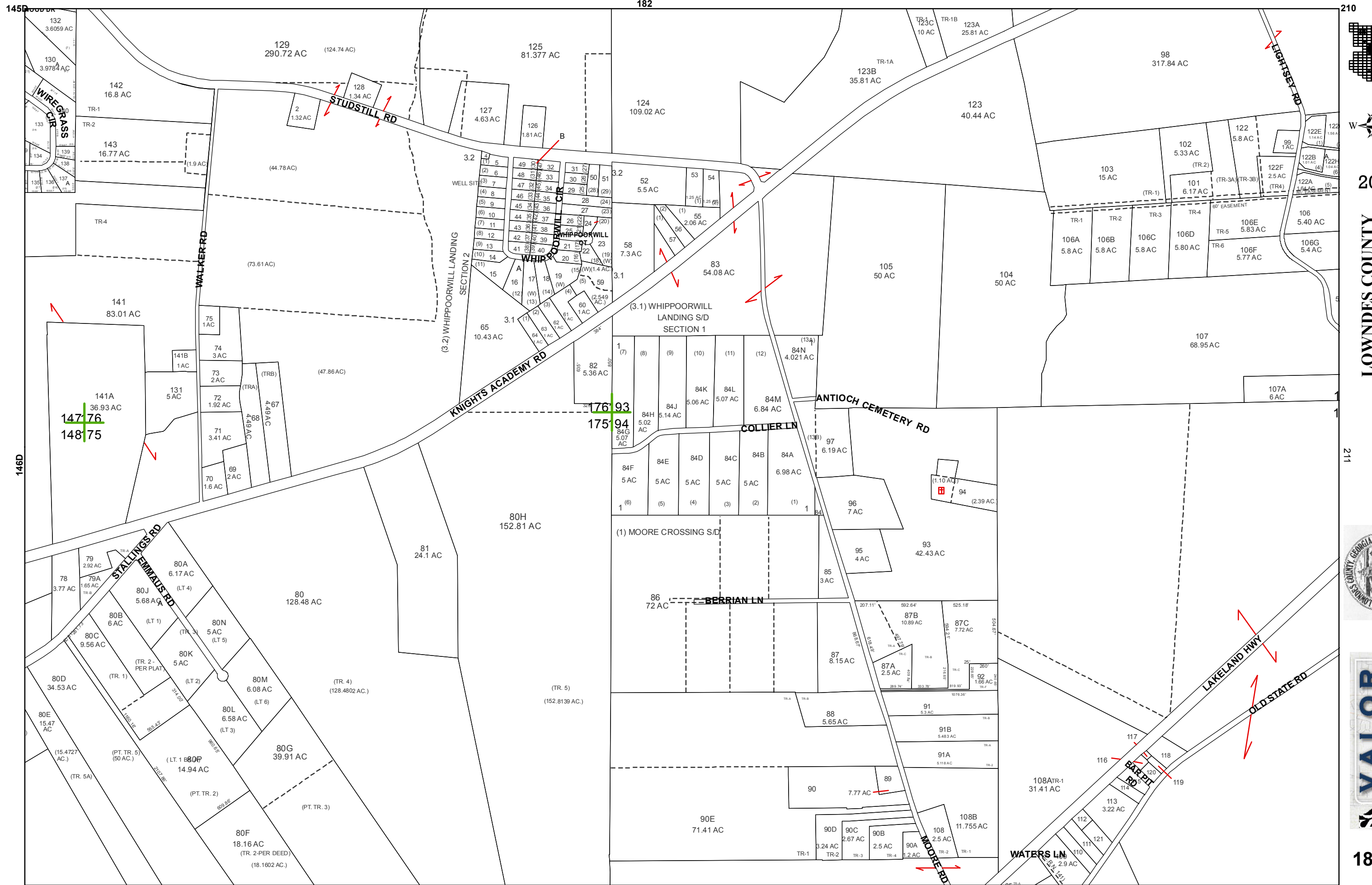
2015

LOWNDES COUNTY  
GEORGIA

1 inch = 800 feet



182



2015

LOWNDES COUNTY  
GEORGIA

1 inch = 800 feet

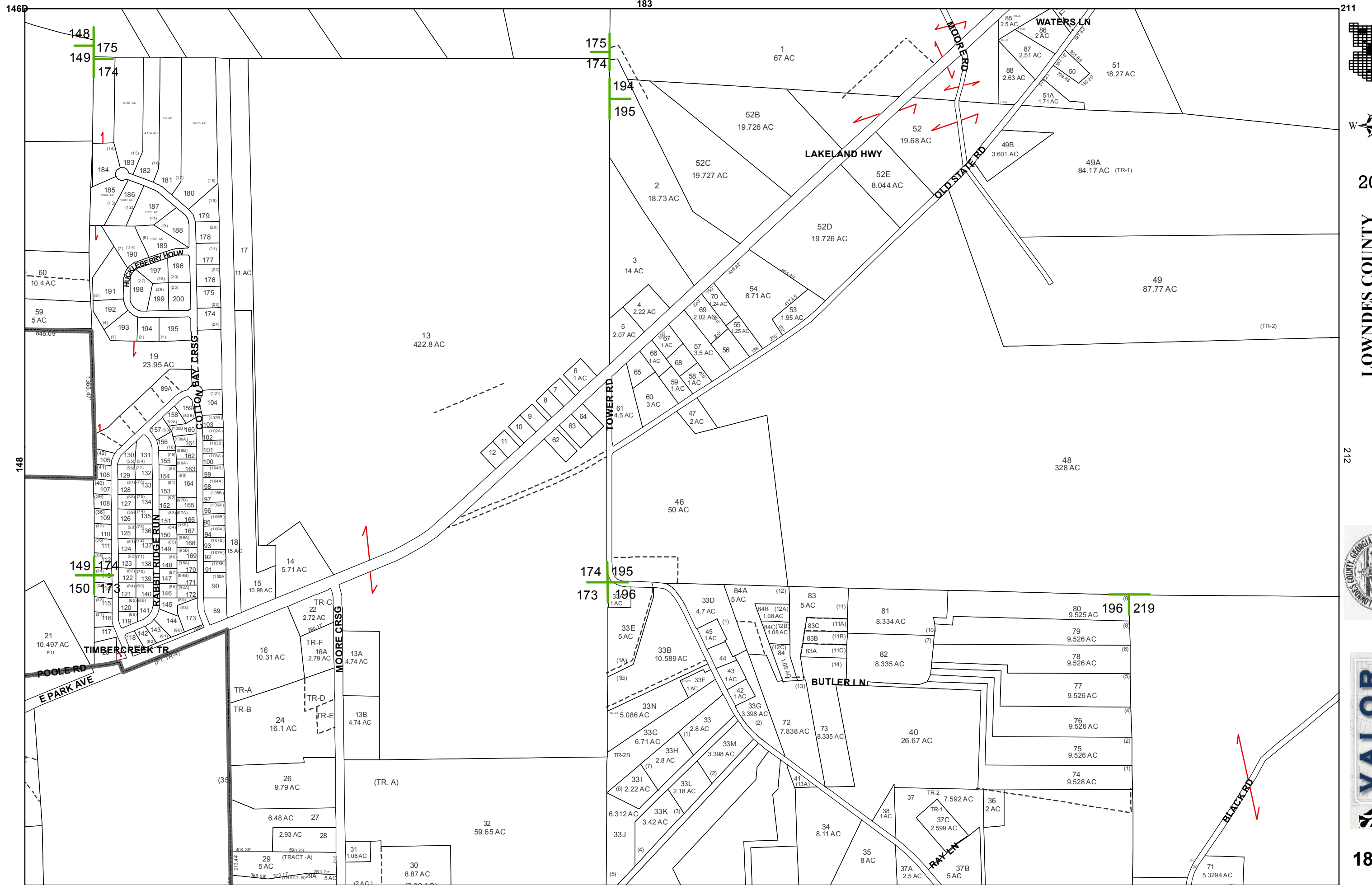


BOARD OF ASSESSORS



183





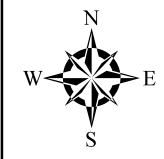
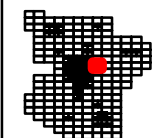
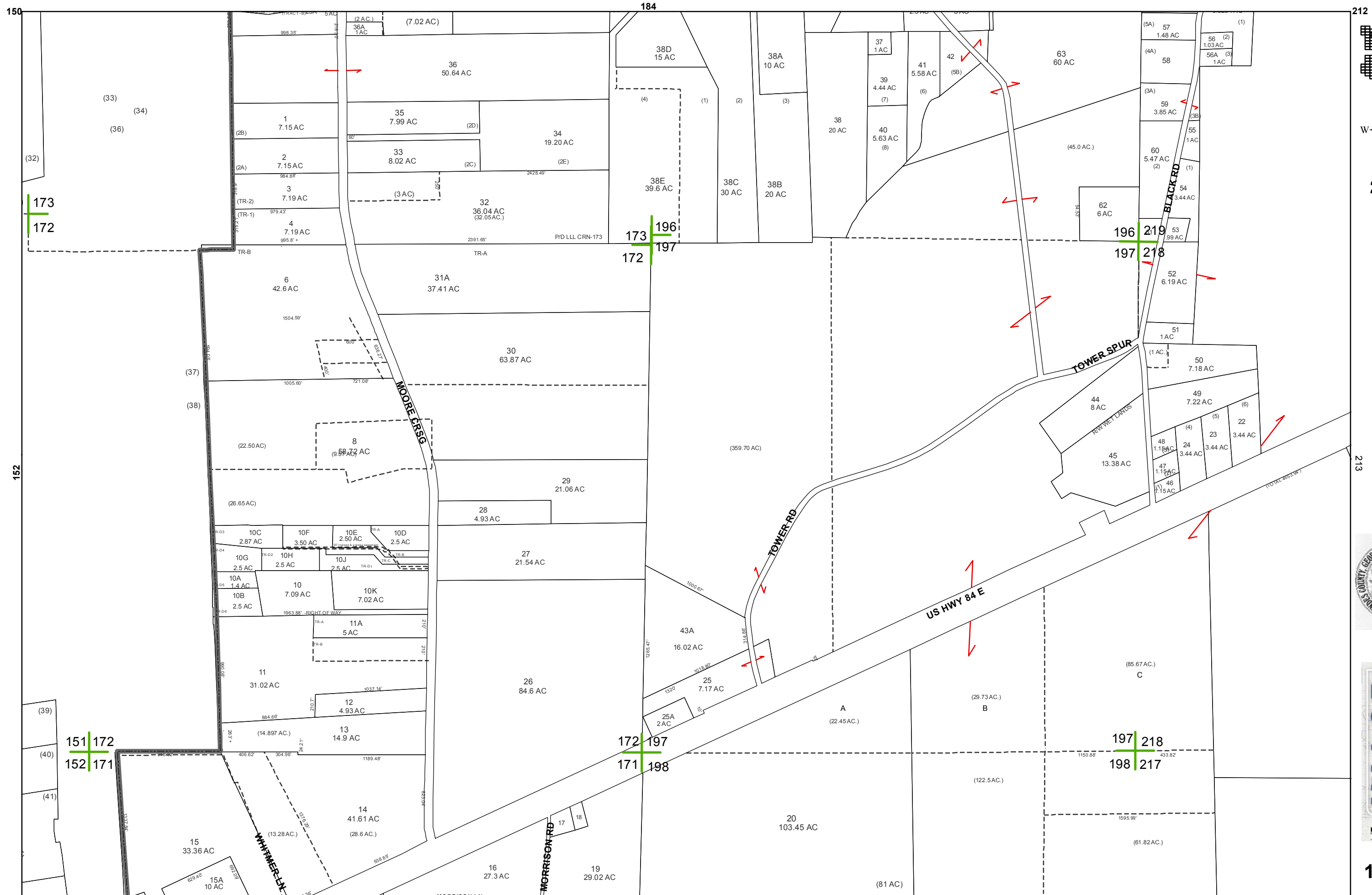
2015

LOWNDES COUNTY  
GEORGIA

1 inch = 800 feet



184



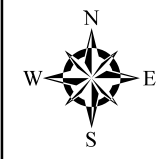
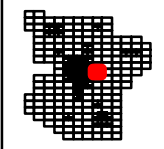
2015

LOWNDES COUNTY  
GEORGIA

1 inch = 800 feet



185



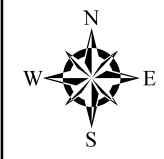
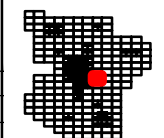
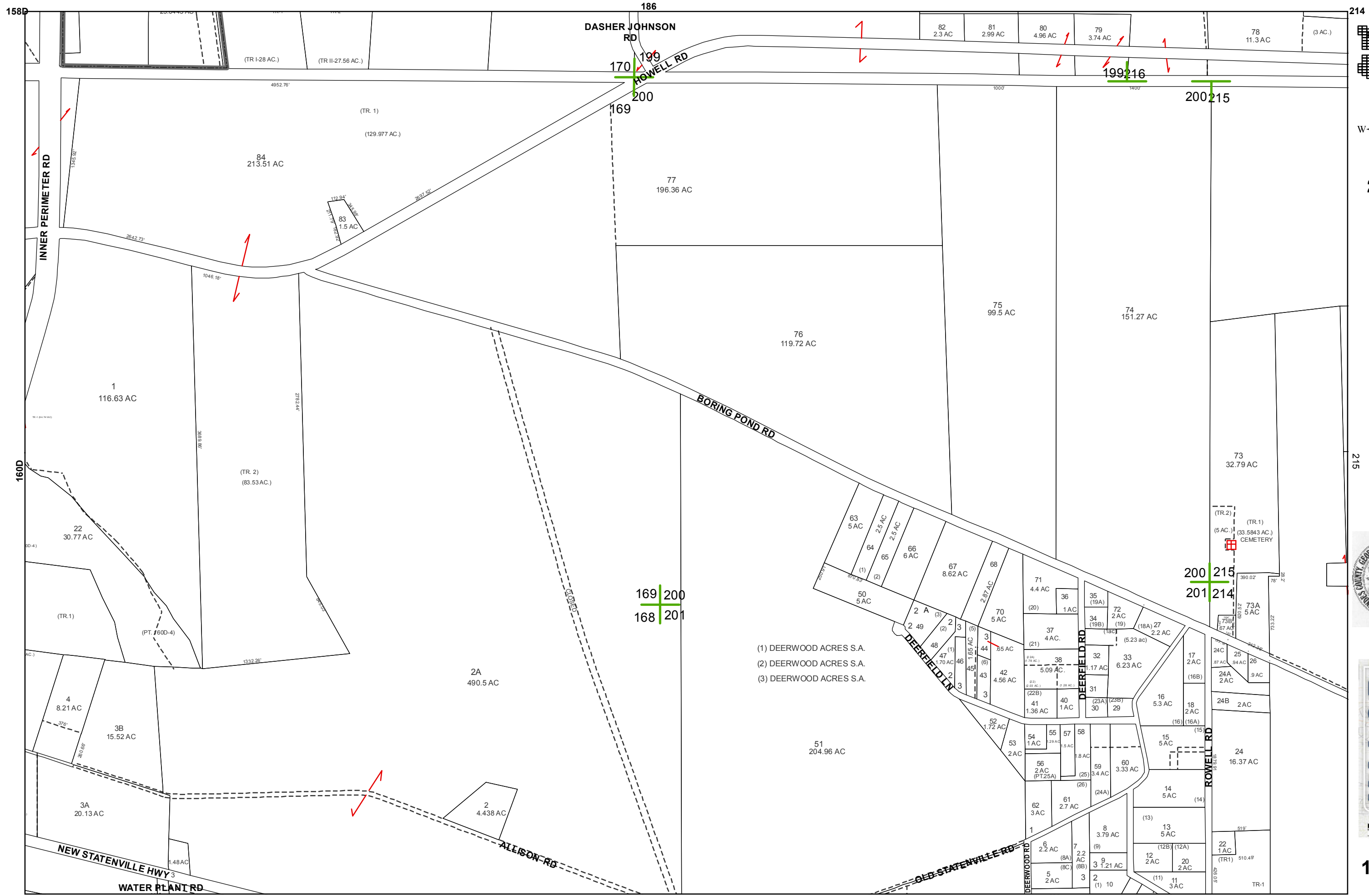
2015

LOWNDES COUNTY  
GEORGIA

1 inch = 800 feet



186



2015

LOWNDES COUNTY  
GEORGIA

1 inch = 800 feet



187

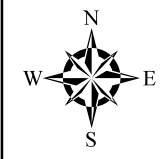
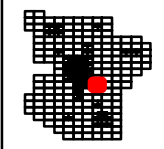
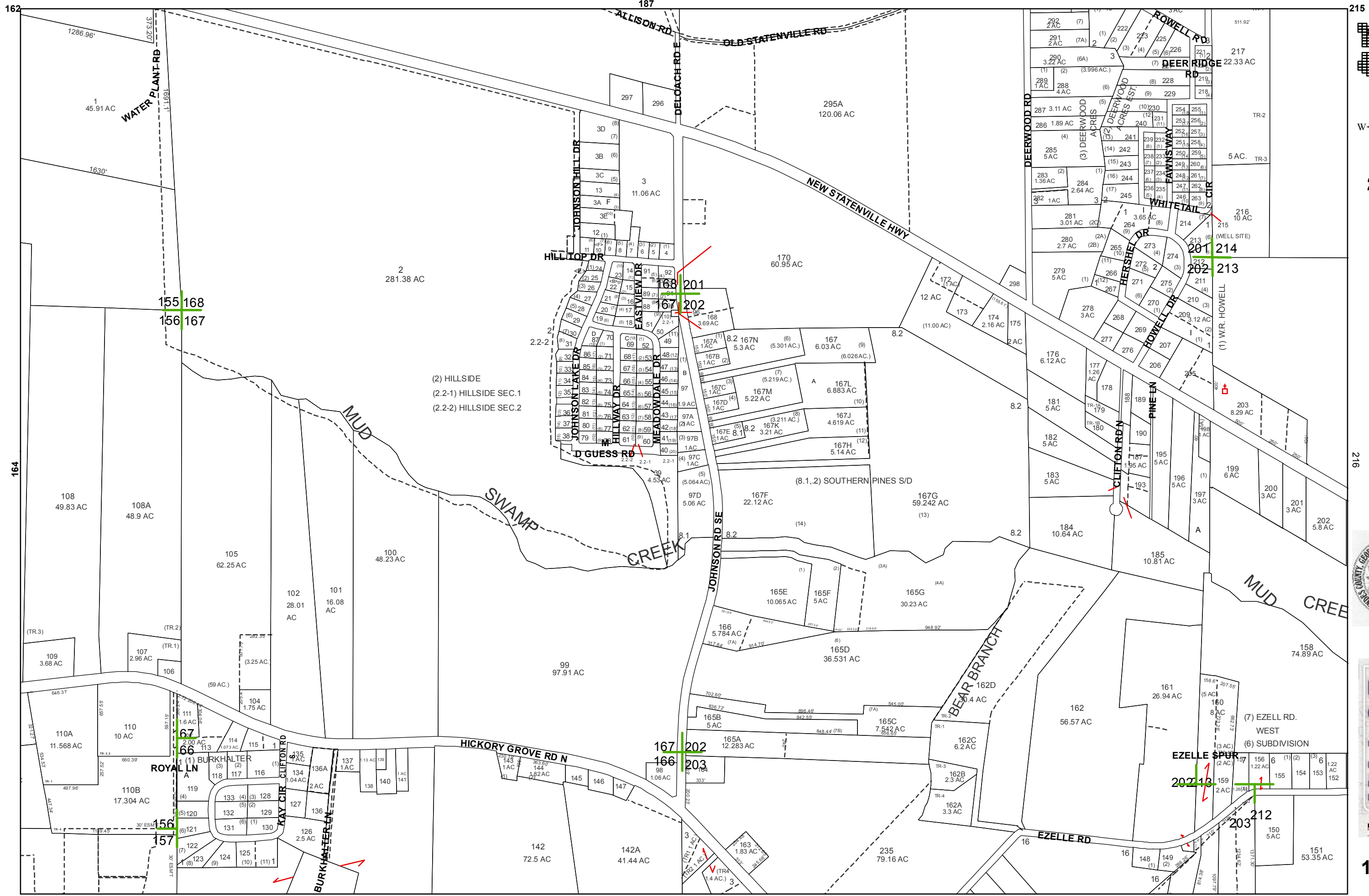
164

Imagery: USDA NAIP 2015.

188

216





2015

LOWNDES COUNTY  
GEORGIA

1 inch = 800 feet



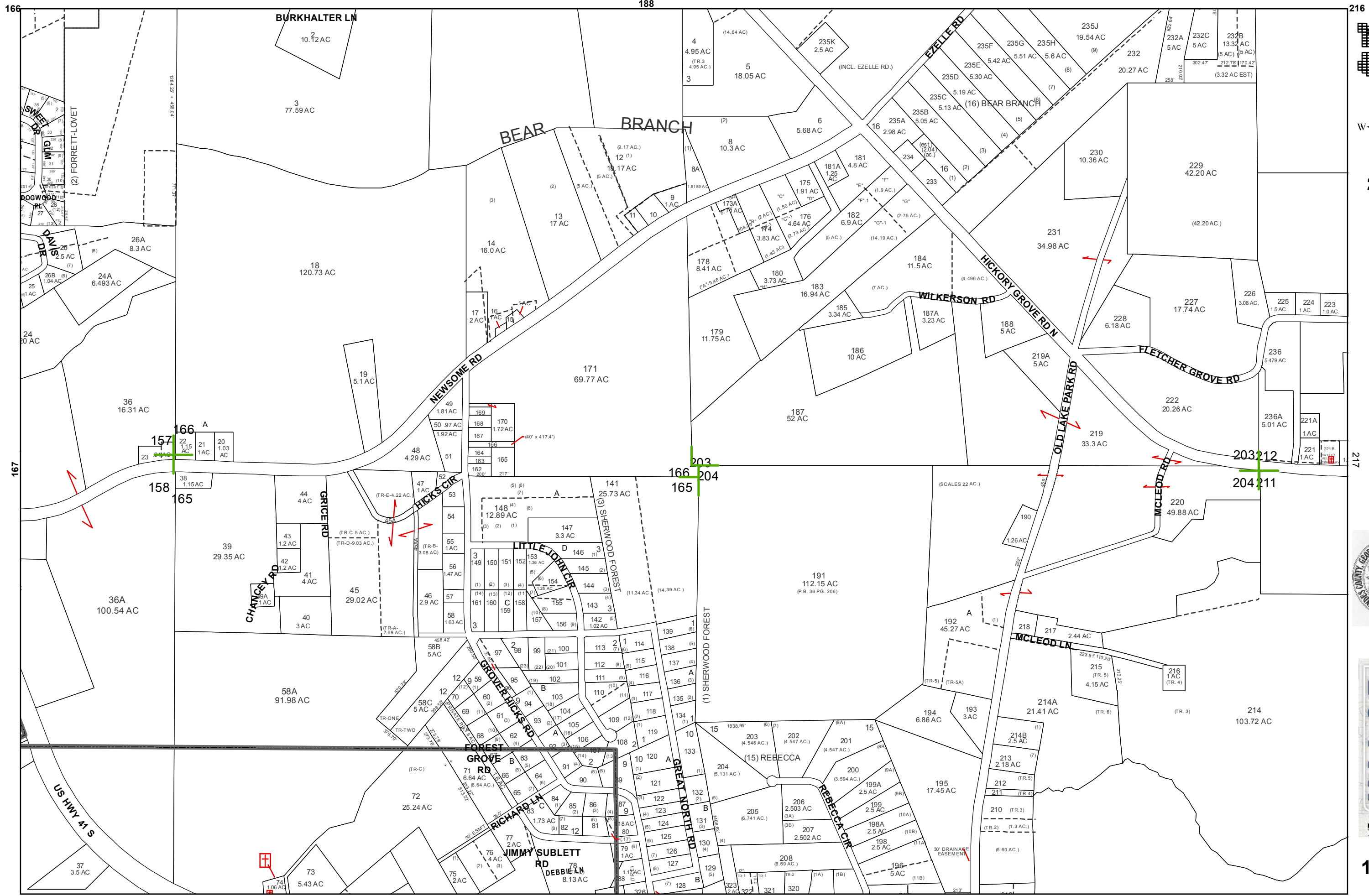
188

167

Imagery: USDA NAIP 2015.

189

217



166

188

216

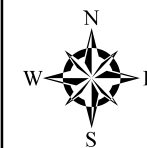
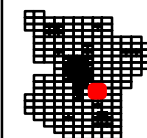
167

168

Imagery: USDA NAIP 2015.

190

218



2015

LOWNDES COUNTY  
GEORGIA

1 inch = 800 feet



189