

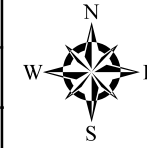
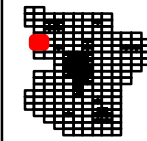
2015

LOWNDES COUNTY
GEORGIA

1 inch = 800 feet



11



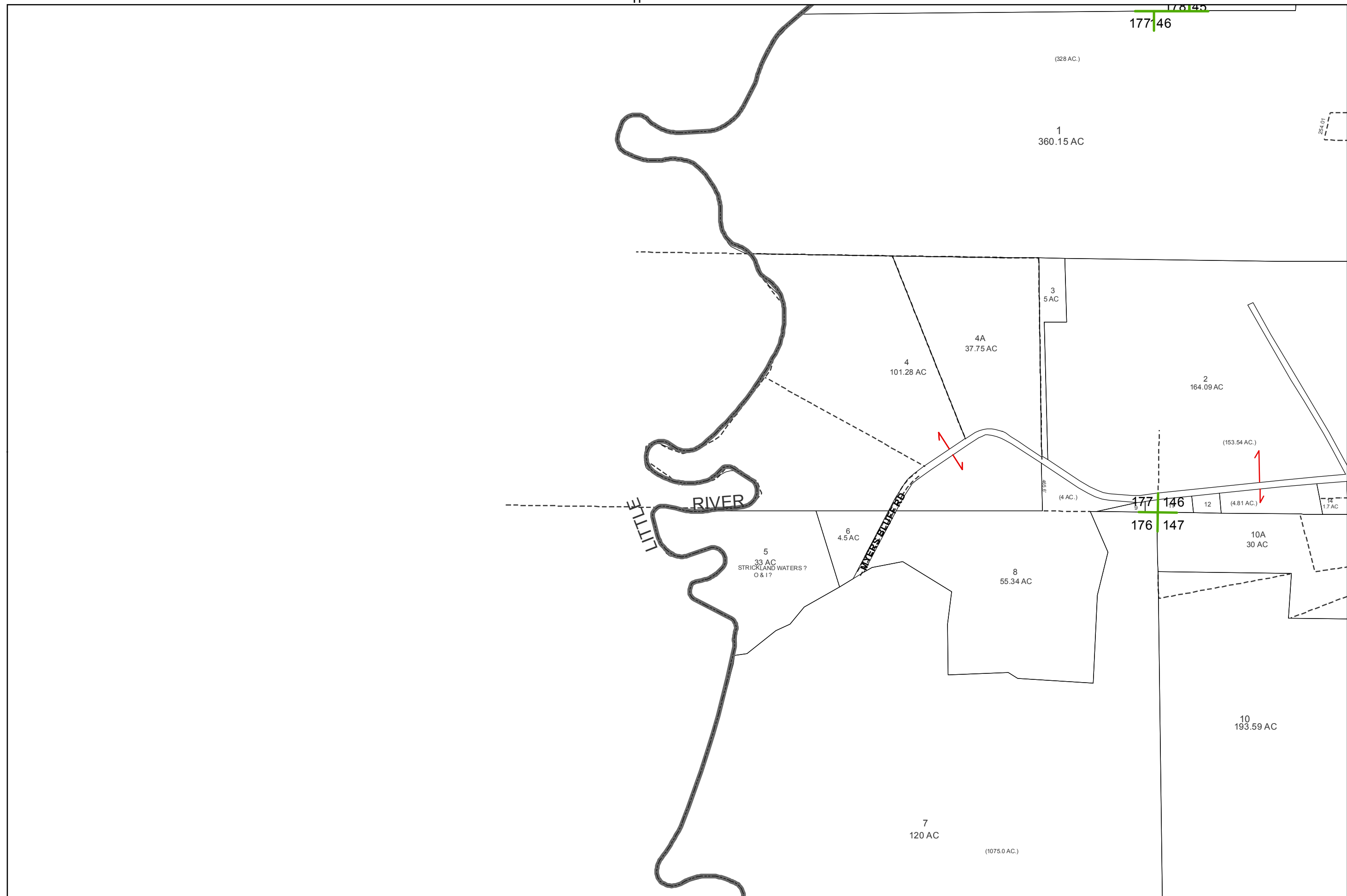
2015

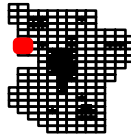
LOWNDES COUNTY
GEORGIA

1 inch = 800 feet



12





2015

LOWNDES COUNTY
GEORGIA

1 inch = 800 feet

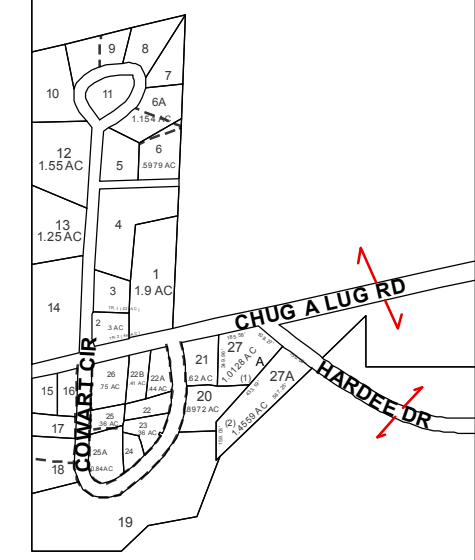


13

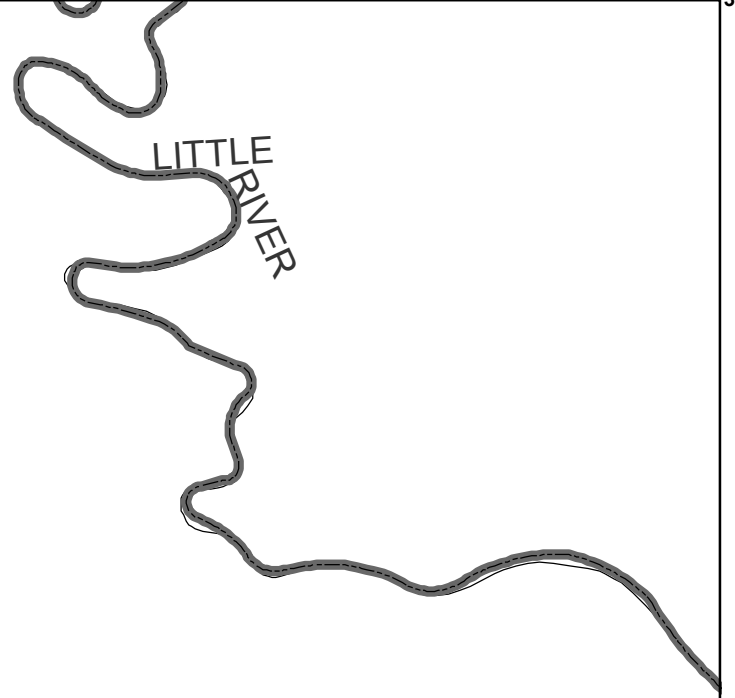
176 | 147
175 | 148

175 | 148
174 | 149

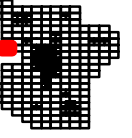
LITTLE RIVER



(125 AC.)



LITTLE RIVER

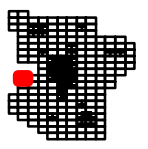


2015

LOWNDES COUNTY
GEORGIA

1 inch = 800 feet





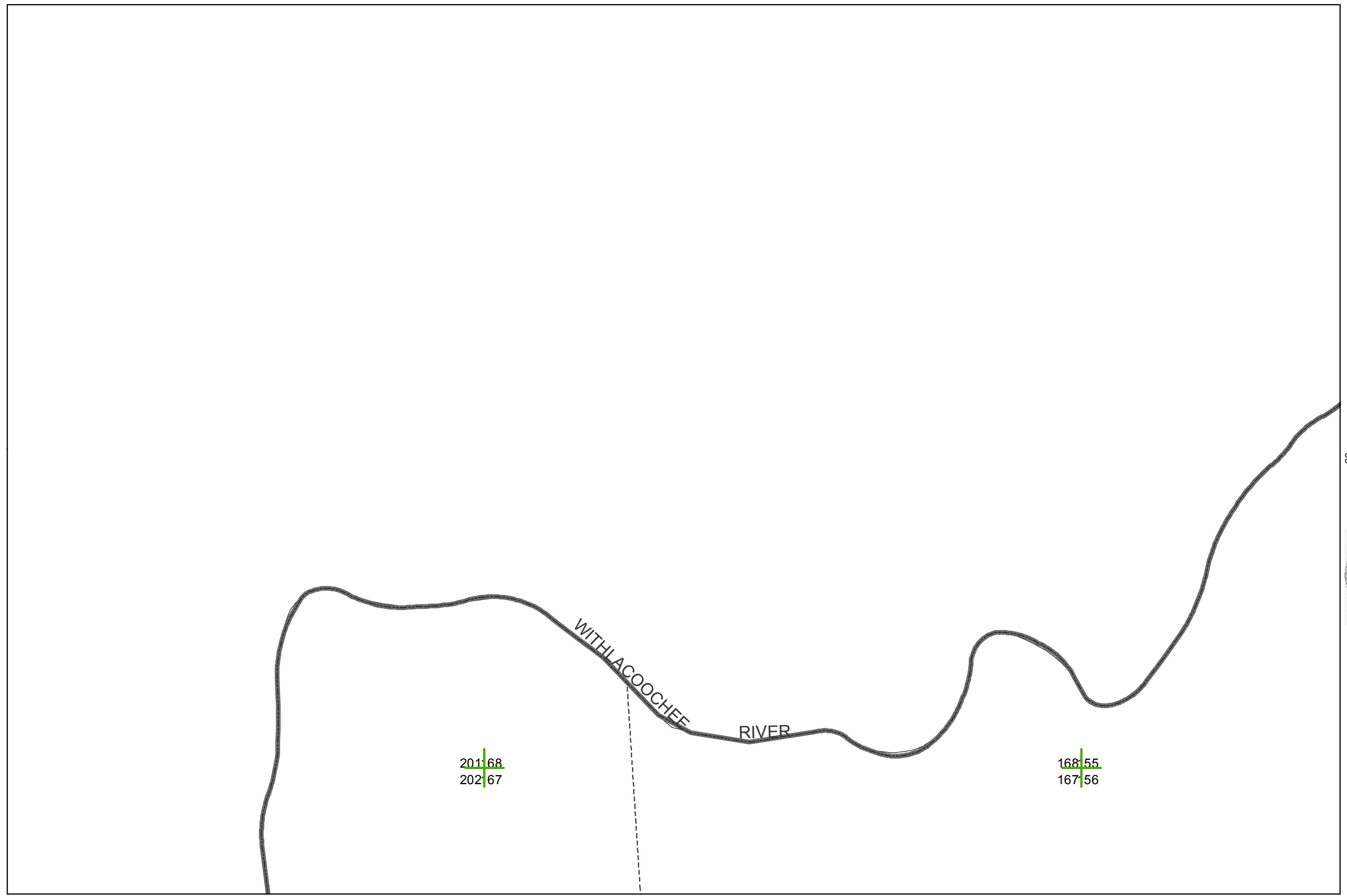
2015

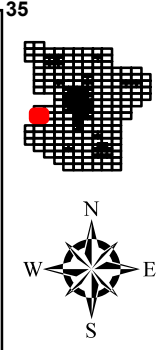
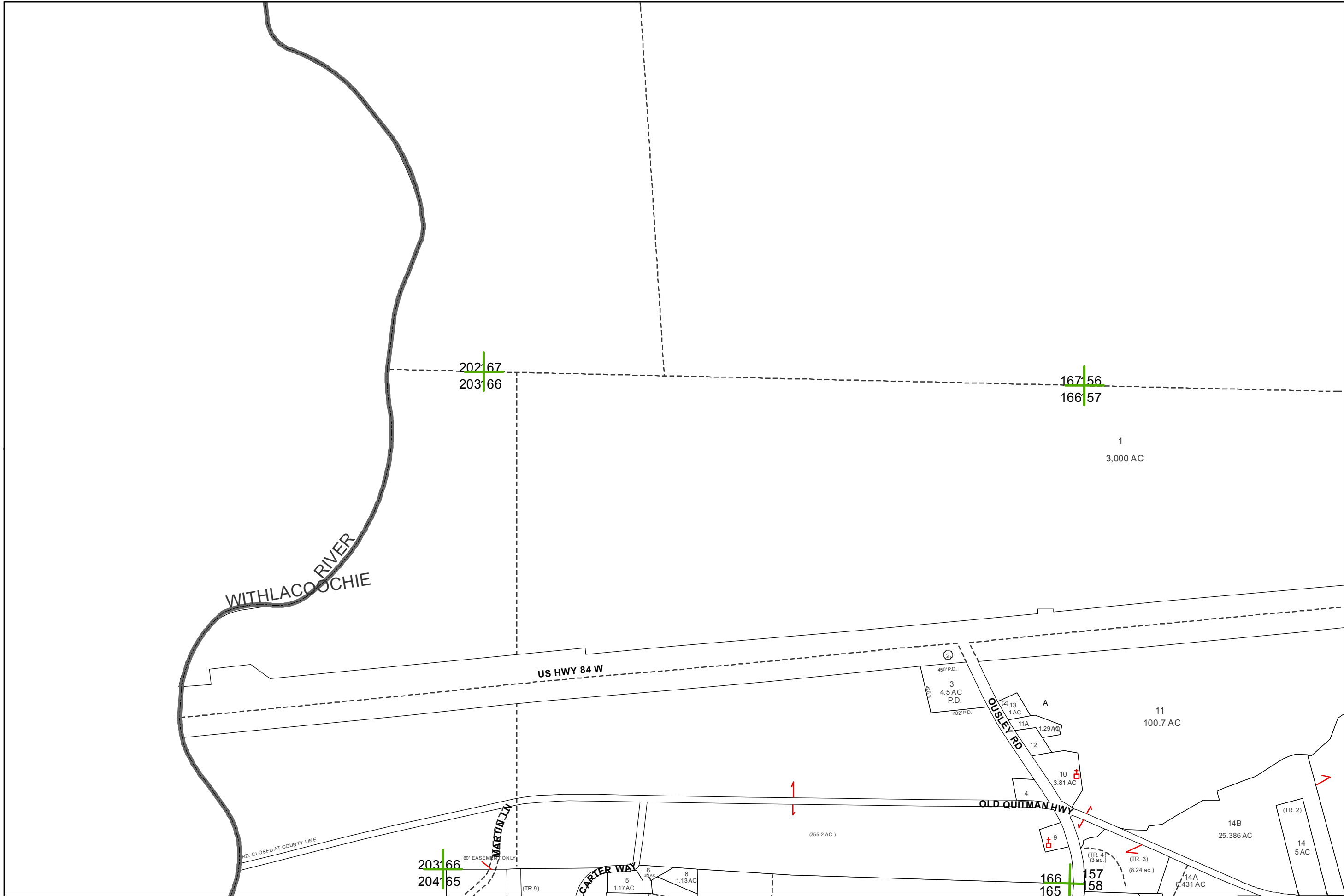
LOWNDES COUNTY
GEORGIA

1 inch = 800 feet



15





2015

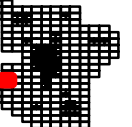
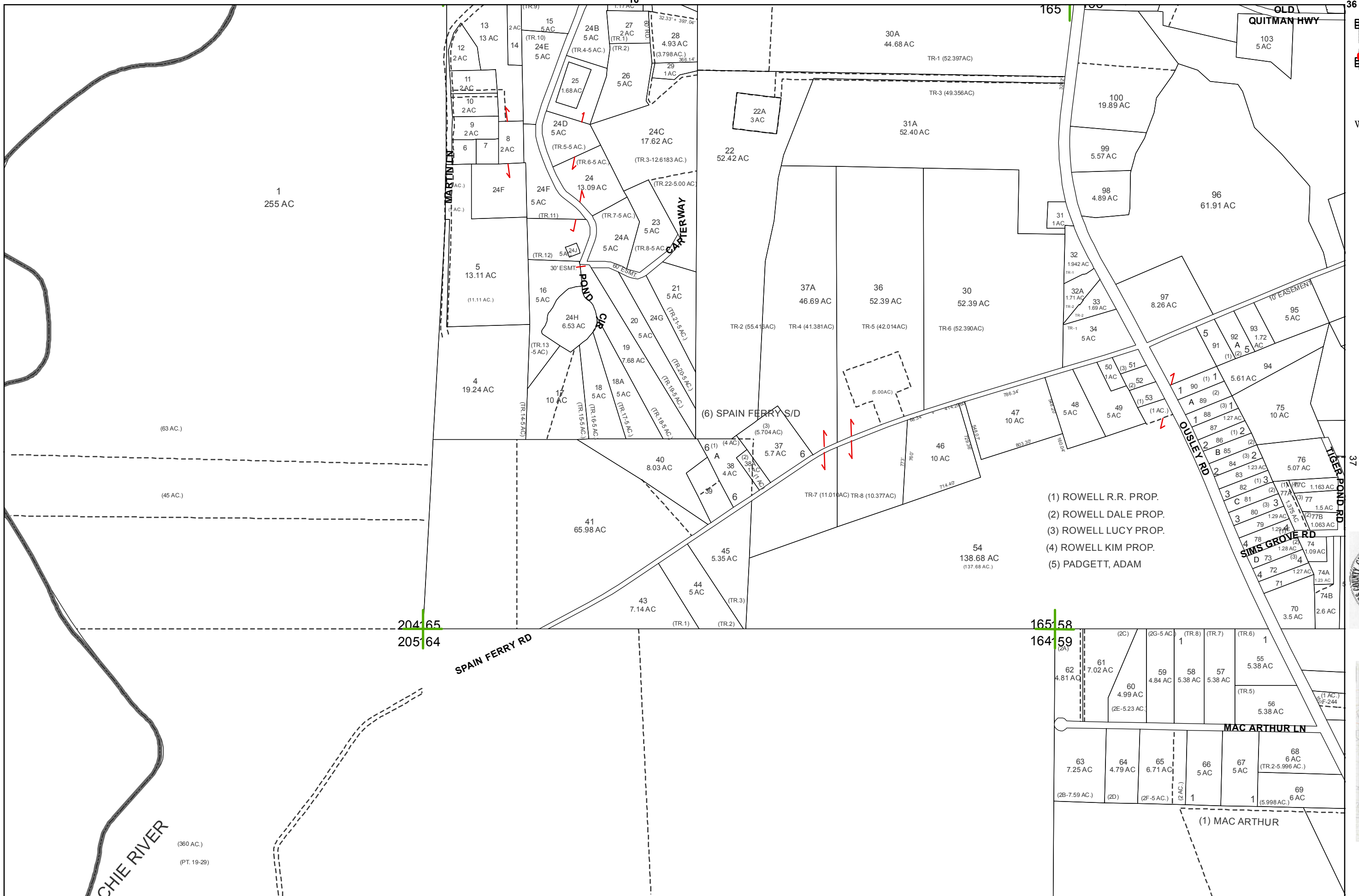
LOWNDES COUNTY
GEORGIA

1 inch = 800 feet



VALOR
Visit VALOR on the web at: WWW.VALORGIS.COM

16



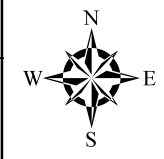
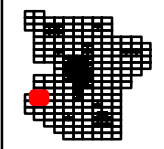
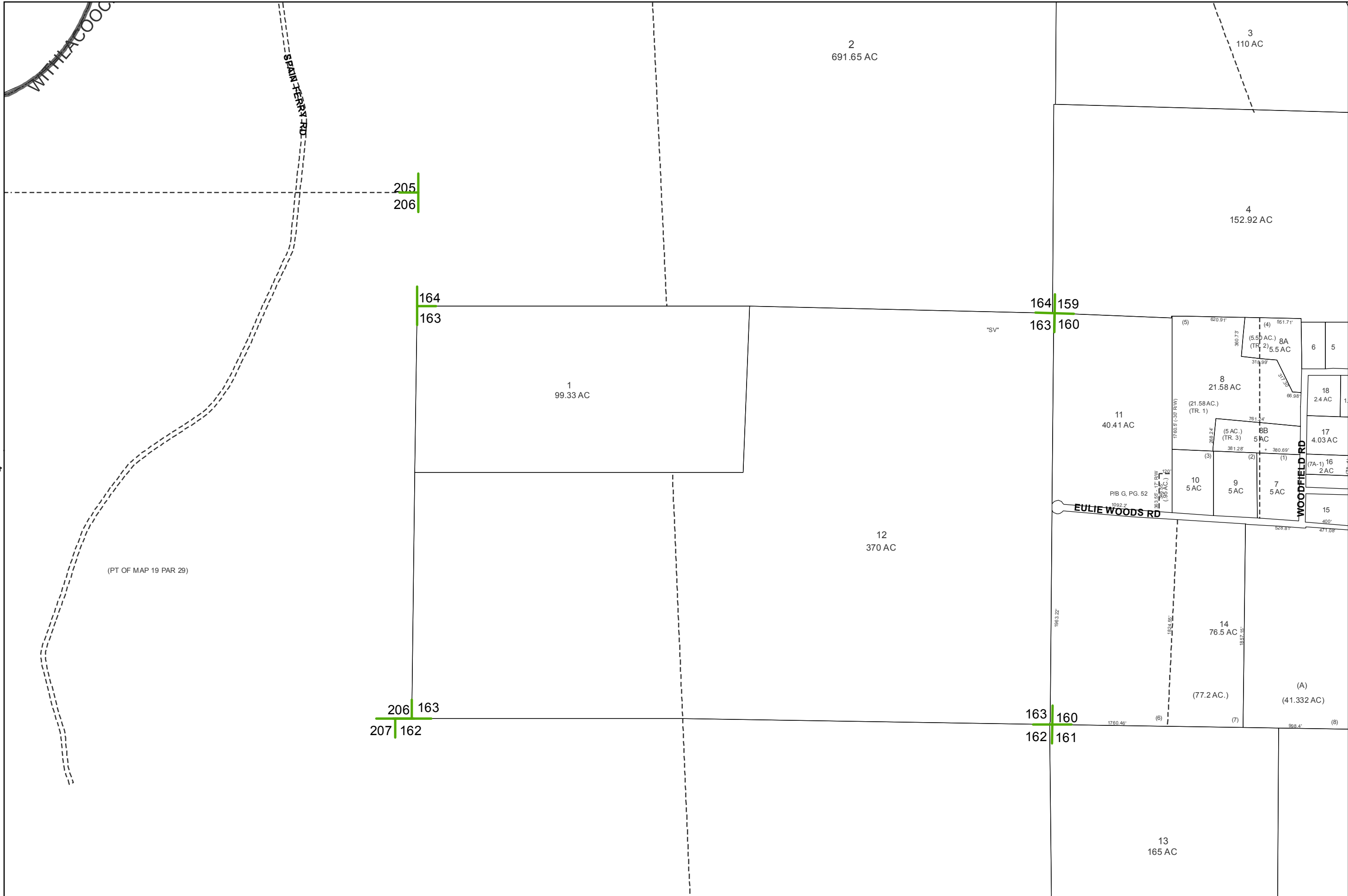
2015

LOWNDES COUNTY
GEORGIA

1 inch = 800 feet



17



2015

LOWNDES COUNTY
GEORGIA

1 inch = 800 feet



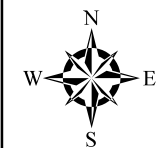
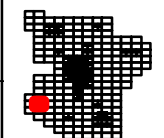
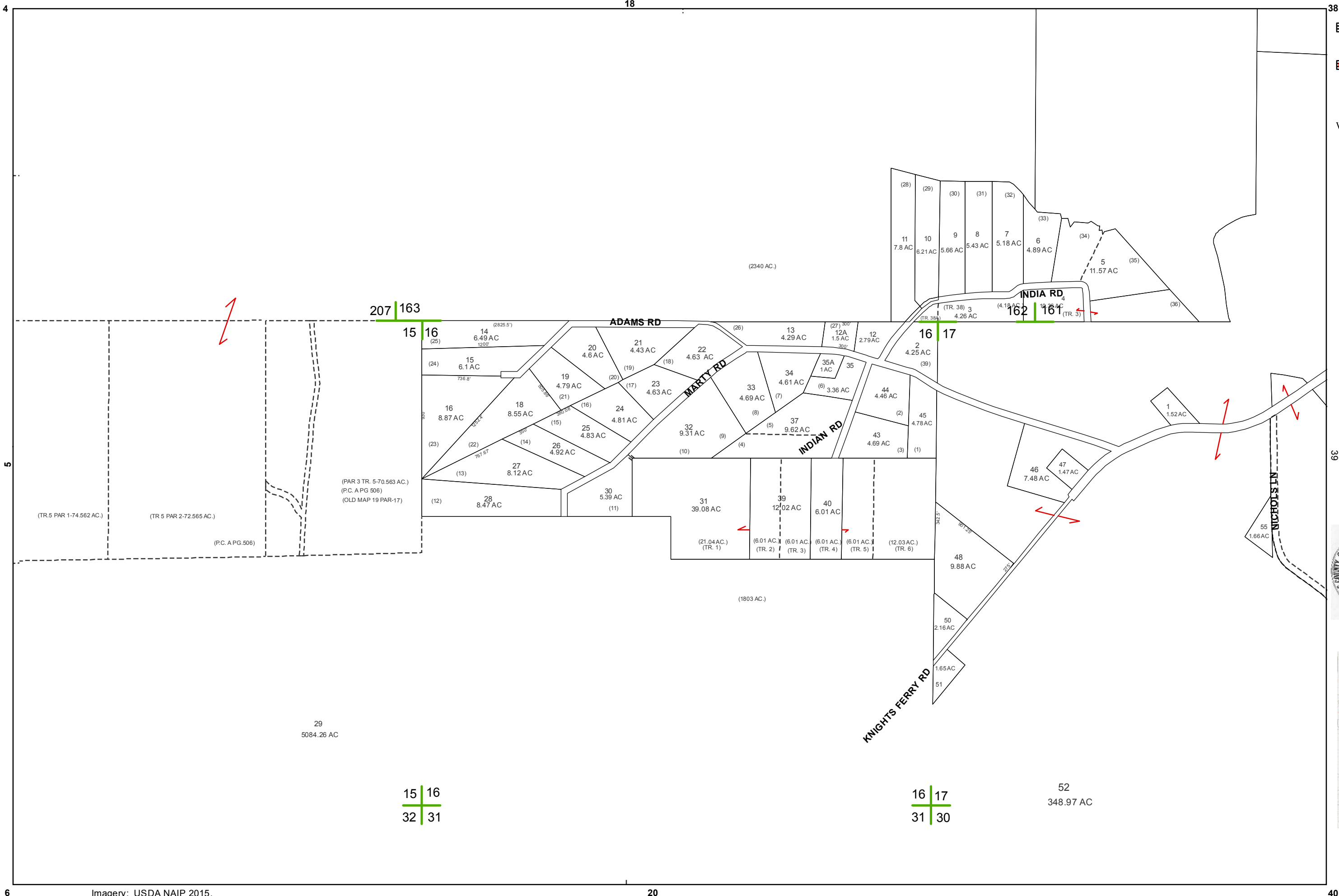
18

5

Imagery: USDA NAIP 2015.

19

39



2015

LOWNDES COUNTY
GEORGIA

1 inch = 800 feet



19