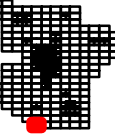




Imagery: USDA NAIP 2015.

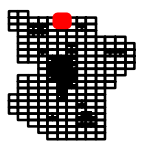


2015

LOWNDES COUNTY  
GEORGIA

140  
1 inch = 800 feet





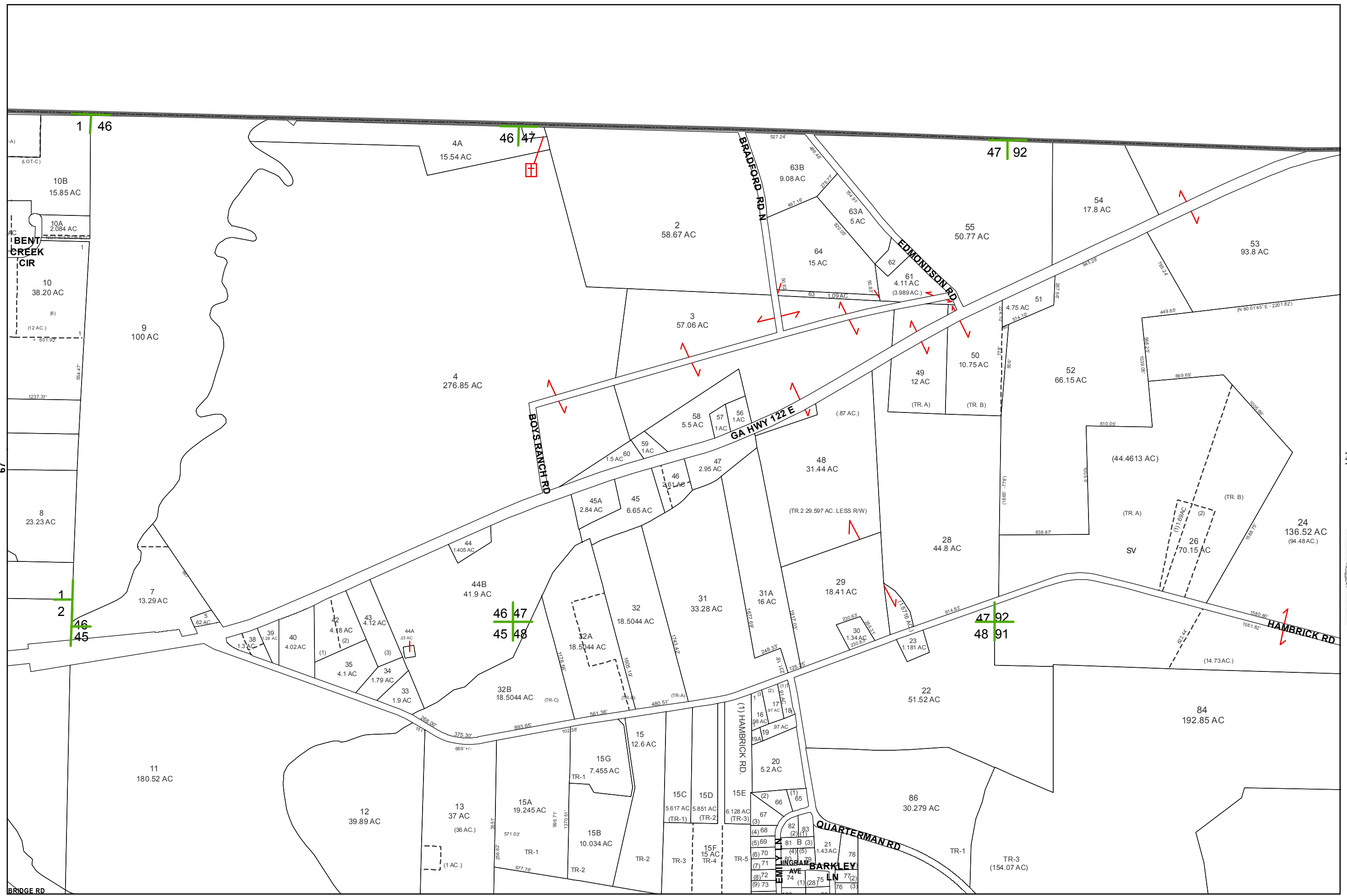
2015

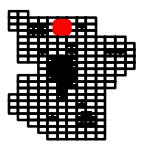
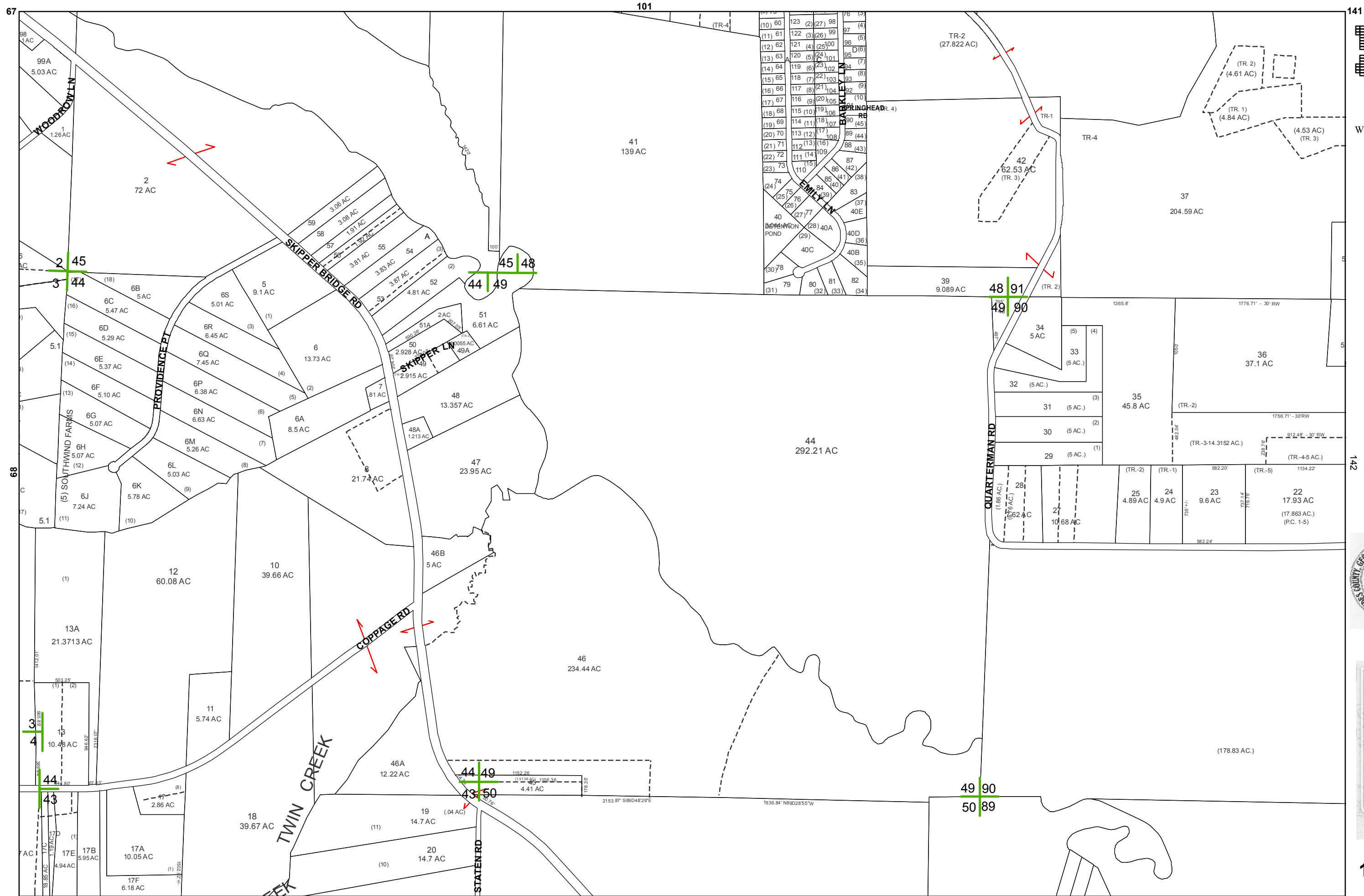
LOWNDES COUNTY  
GEORGIA

1 inch = 800 feet



101





2015

LOWNDES COUNTY  
GEORGIA

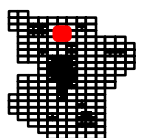
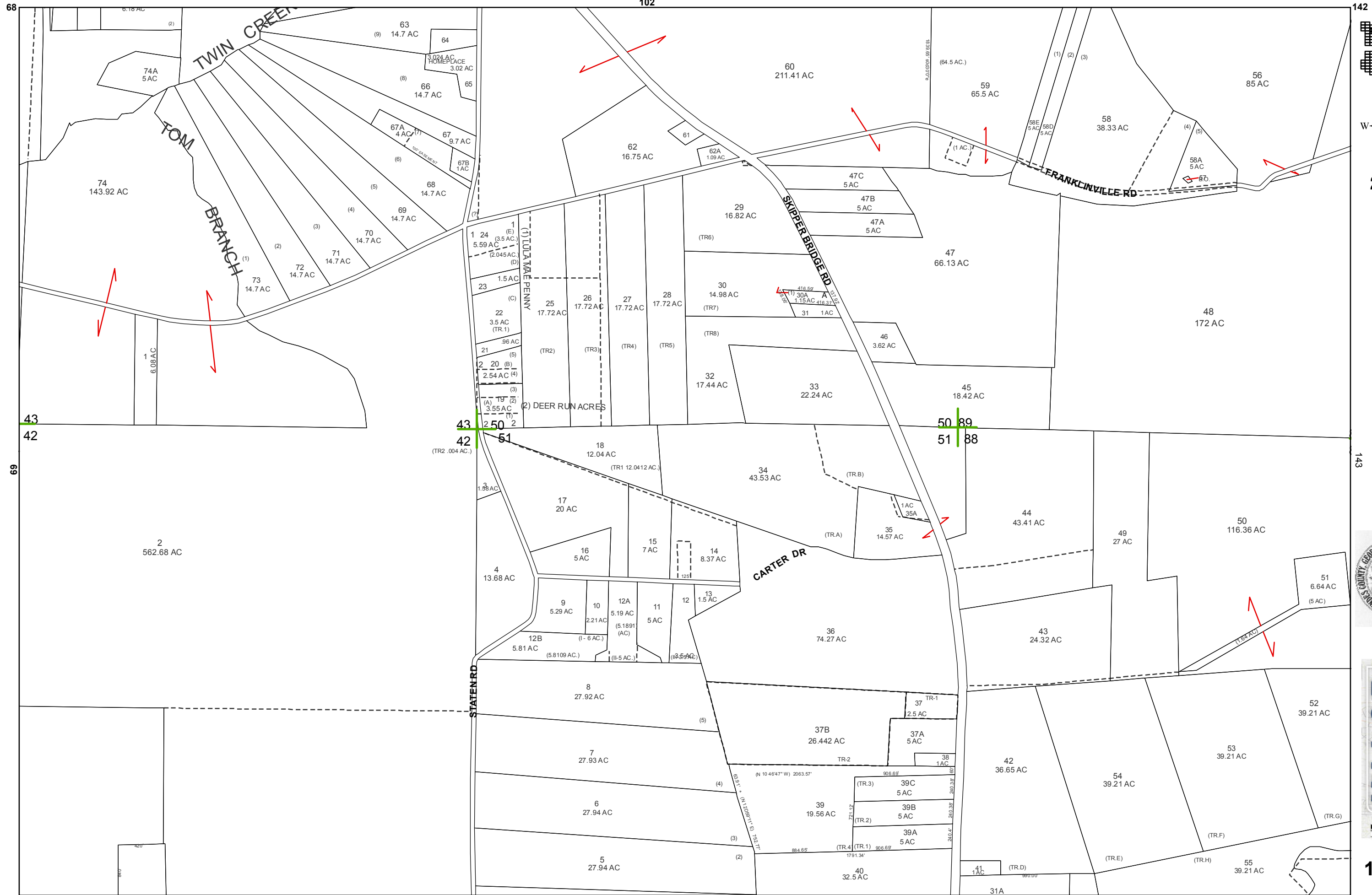
1 inch = 800 feet



BOARD OF ASSESSORS



102



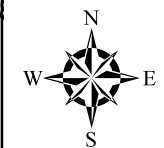
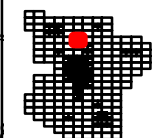
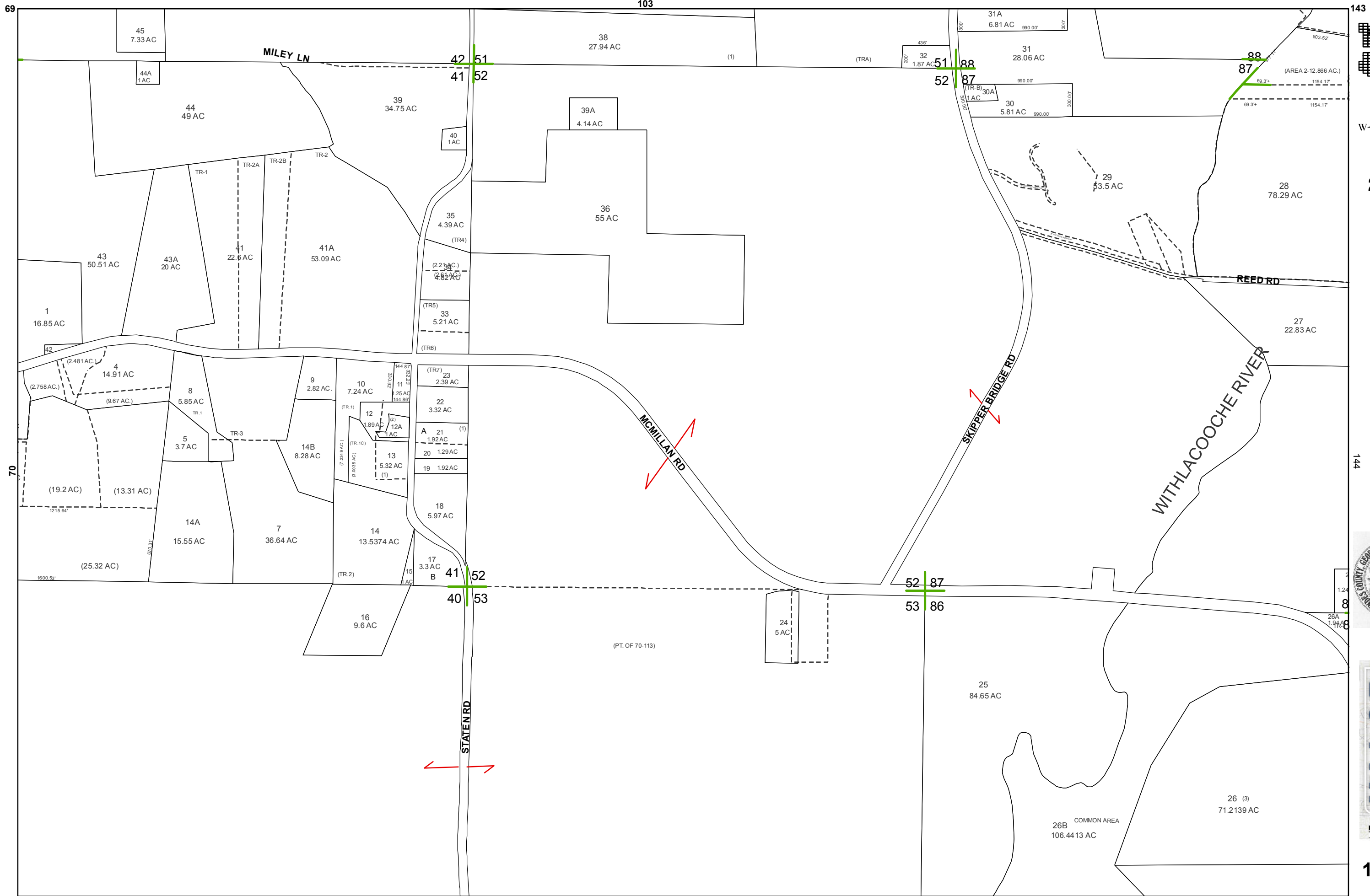
2015

LOWNDES COUNTY  
GEORGIA

1 inch = 800 feet



103



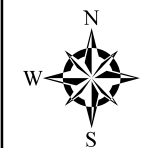
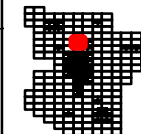
2015

LOWNDES COUNTY  
GEORGIA

1 inch = 800 feet



104



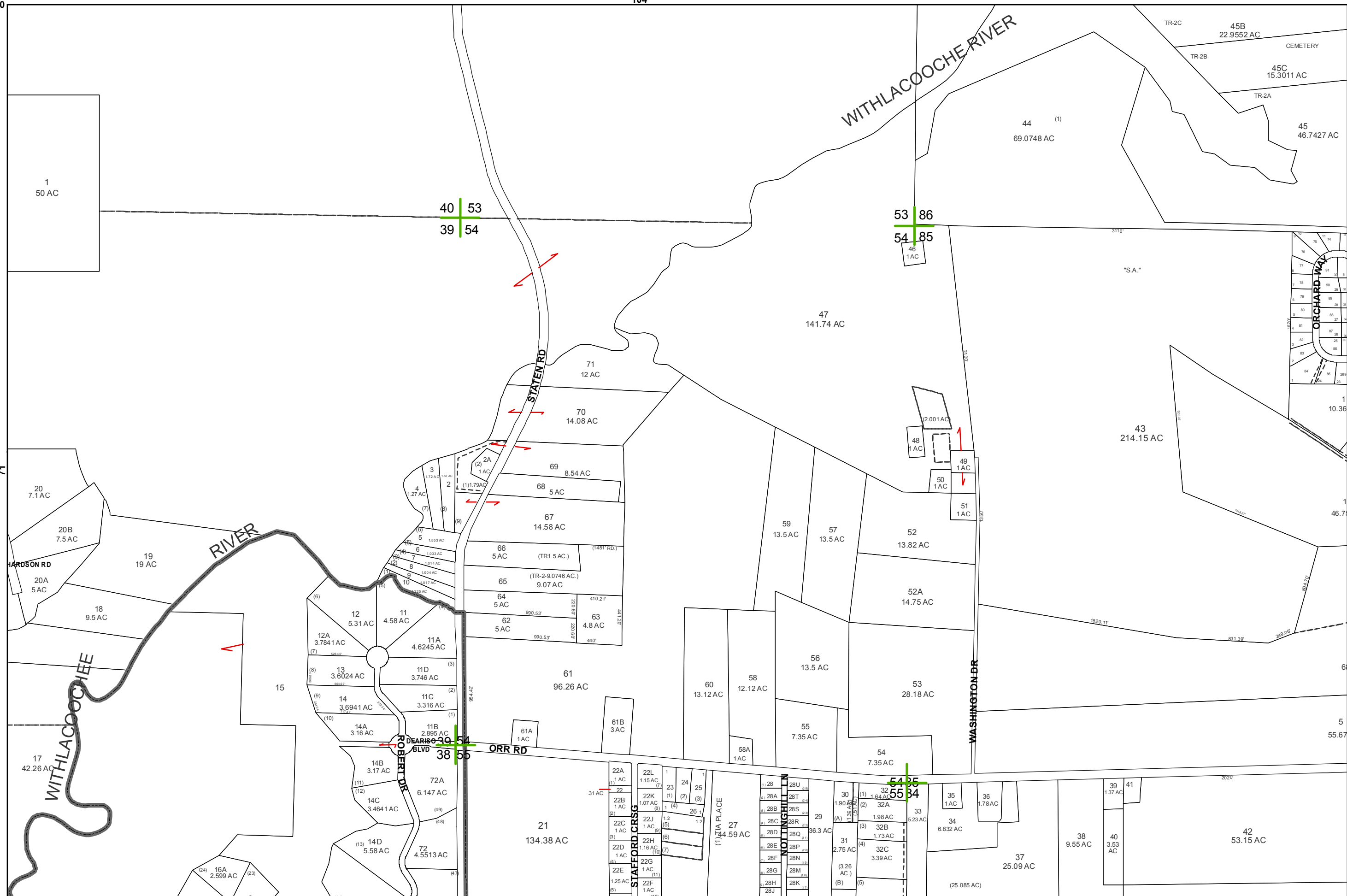
2015

LOWNDES COUNTY  
GEORGIA

1 inch = 800 feet



105

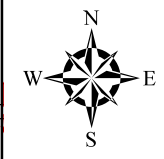
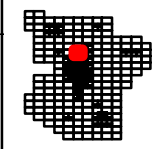
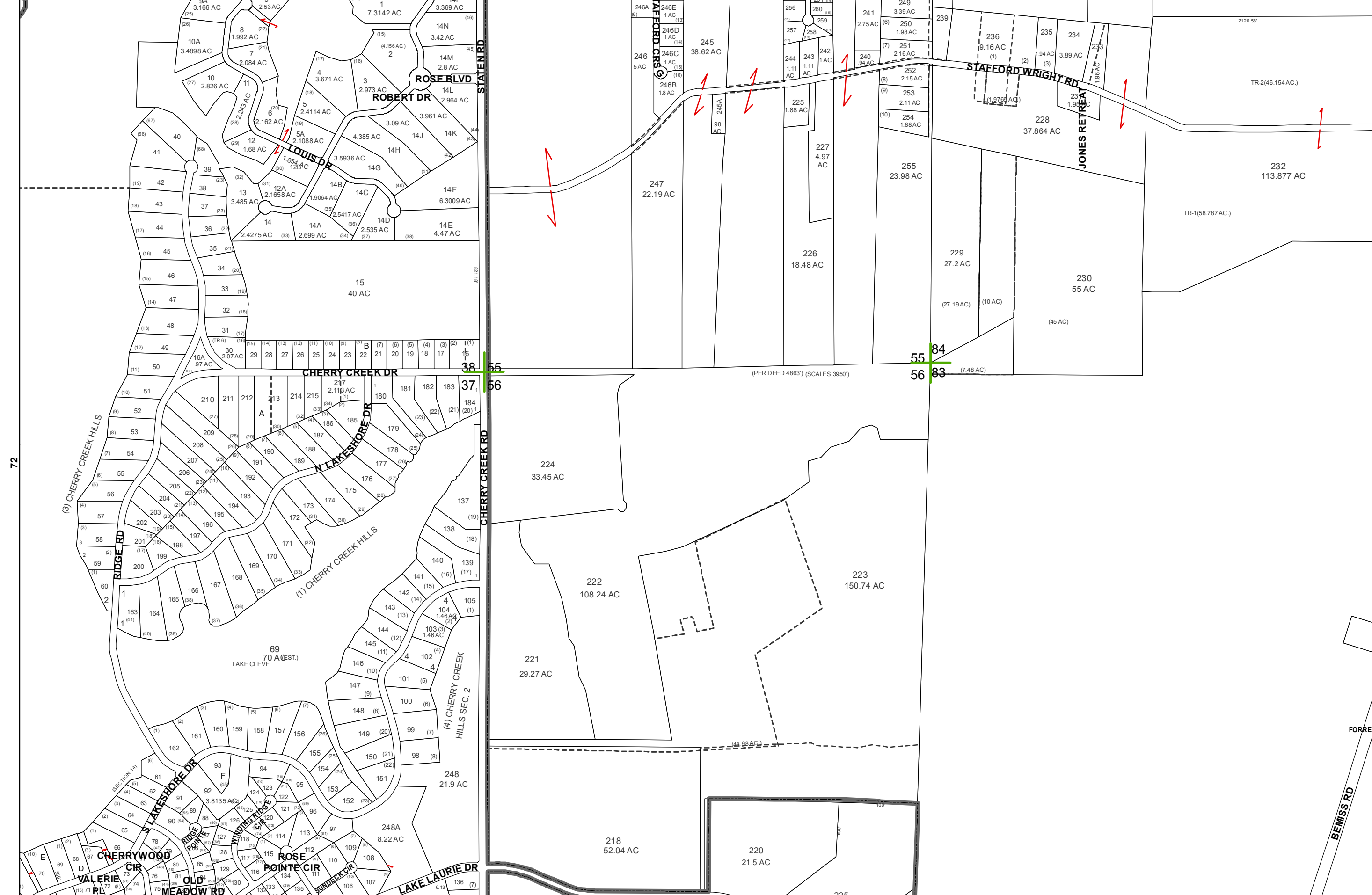


40 | 53  
39 | 54

53 | 86  
54 | 85

38 | 54  
38 | 55

54 | 86  
55 | 84



2015

LOWNDES COUNTY  
GEORGIA

1 inch = 800 feet



BOARD OF ASSESSORS



106